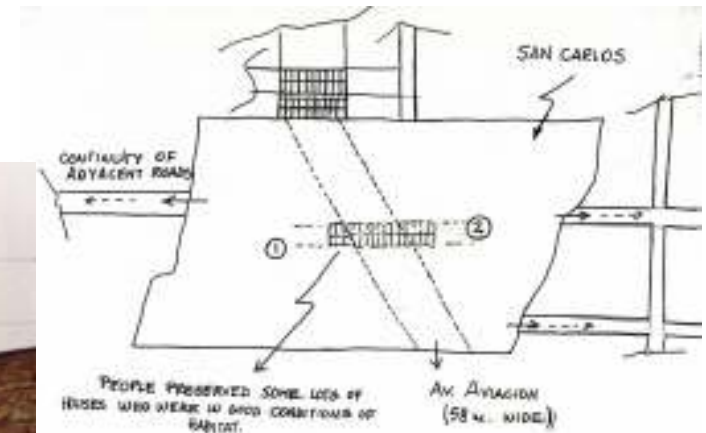


# UPGRADING AND URBAN DEVELOPMENT PROGRAMME



**This programme started in San Carlos de Parque Bajo community in The Santiago de Surco district at The South of Lima, Peru.**

## RENOVACIÓN URBANA EN SAN CARLOS DE PARQUE BAJO



**Process of  
demolishing  
programme in San  
Carlos de Parque  
Bajo**

## UPGRADING AND URBAN REVEWAL PROGRAMME



**With technical training the women started a housing construction programme, using the mud brick and sugar cane in the production of seismic and resistant programme**



## UPGRADING AND URBAN RENEWAL PROGRAMME



**The families were  
organised in  
comunal tasks**

## UPGRADING AND URBAN DEVELOPMENT PROGRAMME



**San CARLOS DE  
Parque Bajo now**



## THE REPLICATION OF SAN CARLOS IN TEJADA ALTA



**A second work experience started in The Tejada Alta community both of them in the same district of Surco**

## REPLICATION IN TEJADA ALTA COMMUNITY



**In agreement with SENCICO, a training programme of concrete and prefabricated components started involving the women from the area**



## REPLICATION IN TEJADA ALTA COMMUNITY



**In this way, a first  
microenterprise involving  
women was constituted  
with the name of  
CONCREMAT**



## **WOMEN MICROENTERPRISE - CONCREMAT**



**A first production was obtained by the local government for using in the construction of parks.**



**The women participated in the construction of housing programmes, comunal locals not only in their community but also in other areas of Lima.,**

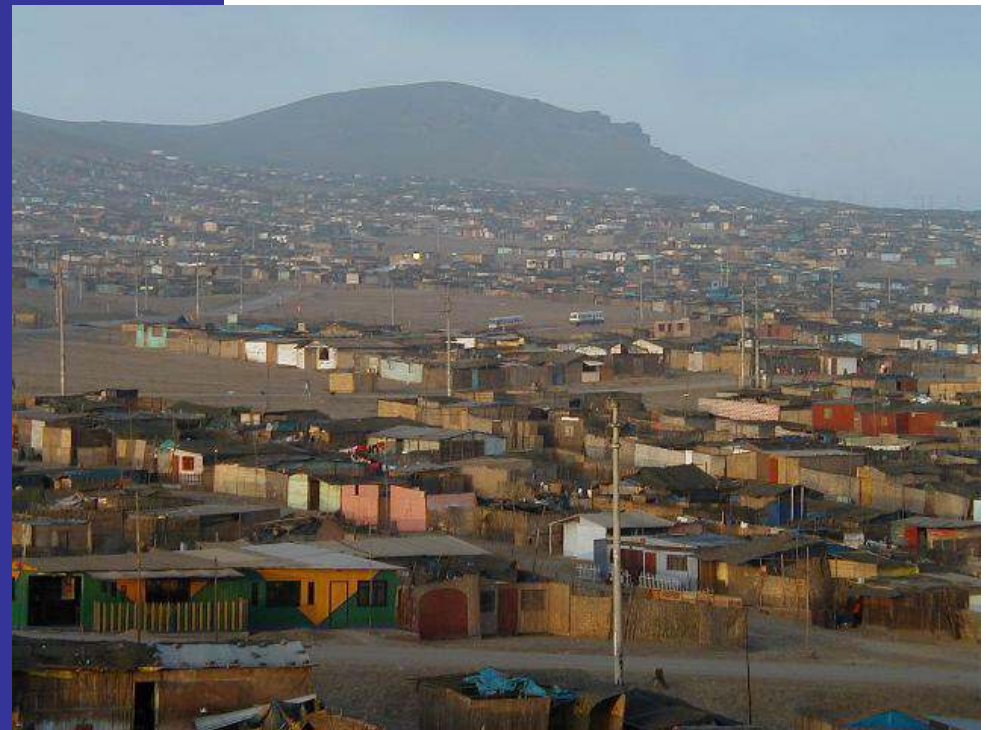
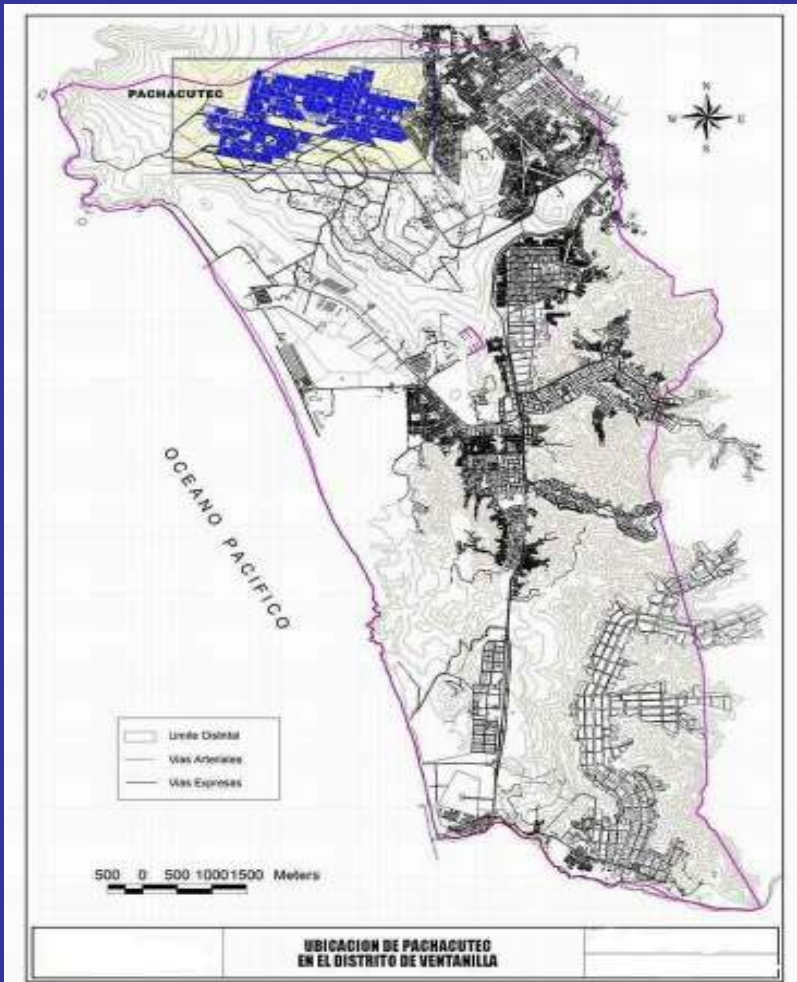
## MICROENTERPRISE OF WOMEN - CONCREMAT



**Comunal Dining room  
Comunal in Santa Isabel de  
Villa en Chorrillos**

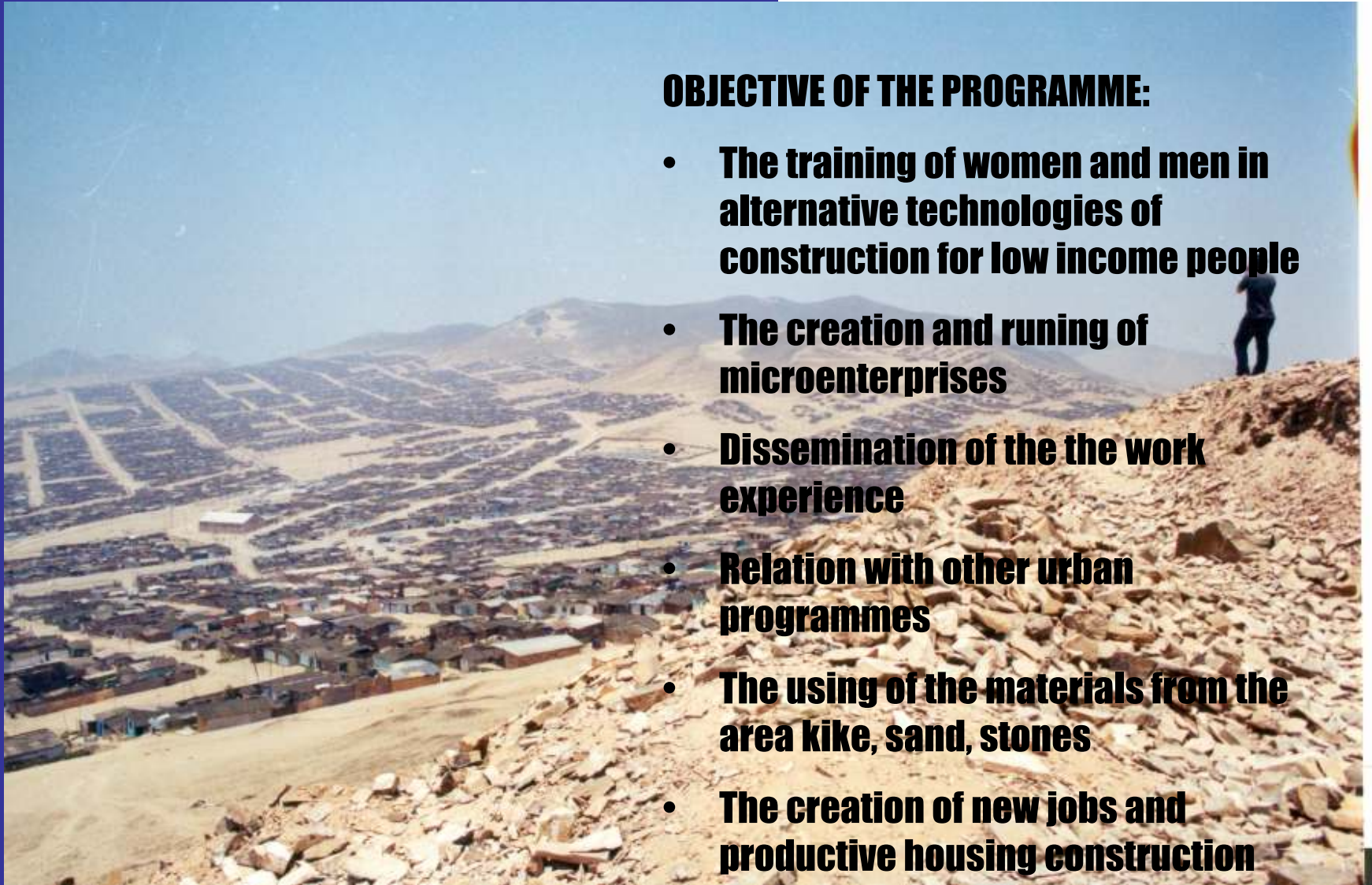
## REPLICATION IN PACHACUTEC CITY

**Pachacutec is located at The North West of Lima city in the Vemntanilla district, Callao Region. The area is about 2771 Ha of area, living there 50,000 families.**





## REPLICATION IN PACHACUTEC CITY



### OBJECTIVE OF THE PROGRAMME:

- **The training of women and men in alternative technologies of construction for low income people**
- **The creation and running of microenterprises**
- **Dissemination of the the work experience**
- **Relation with other urban programmes**
- **The using of the materials from the area like, sand, stones**
- **The creation of new jobs and productive housing construction**

## TRAINING PROGRAMME IN CONSTRUCTIVE TECHNIQUES



**Women show their interest  
in the training programme**



# TRAINING PROGRAMME IN CONSTRUCTIVE TECHNIQUES





## TRAINING PROGRAMME IN CONSTRUCTIVE TECHNIQUES



## TRAINING PROGRAMME IN CONSTRUCTIVE TECHNIQUES

**Group of people trained  
from the E Sector in The  
Pachacutec City**





## CONCRETE AND PREFABRICATED COMPONENTES





## CONCRETE AND PREFABRICATED COMPONENTS



## CONCRETE AND PREFABRICATED COMPONENTES





## PRODUCING THE CONCRETE COMPONENTS IN THE FACTORY





## HOUSING PROGRAMME WITH GENDER EQUITY



**Actual status of housing:  
87% use straw panels  
and wood ( INEI )**



# HOUSING PROGRAMME WITH GENDER EQUITY



Concrete blocks units



Concrete beams



Concrete domes for the roof



Concrete blocks units in the walls



Foundation



Interior view



## CONSTRUCTIVE PROCESS



## HOUSING PROGRAMME WITH GENDER EQUITY

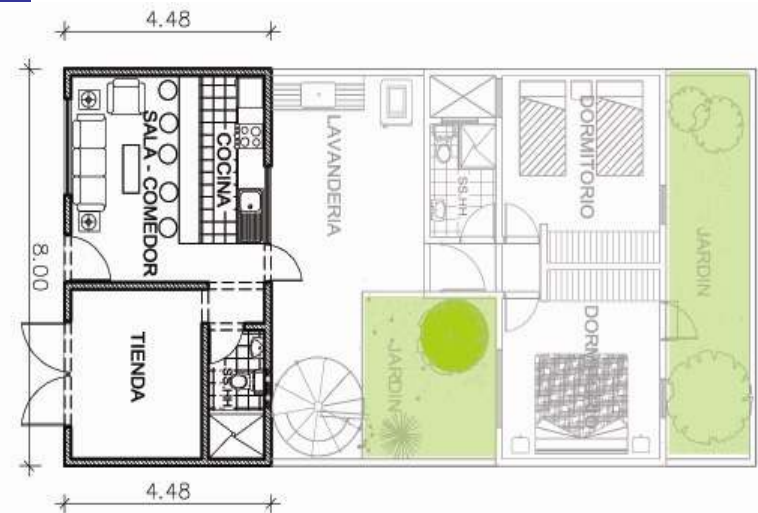


**Housing construction programme in “Los Olivos de la Paz” in The Pachacutec city**

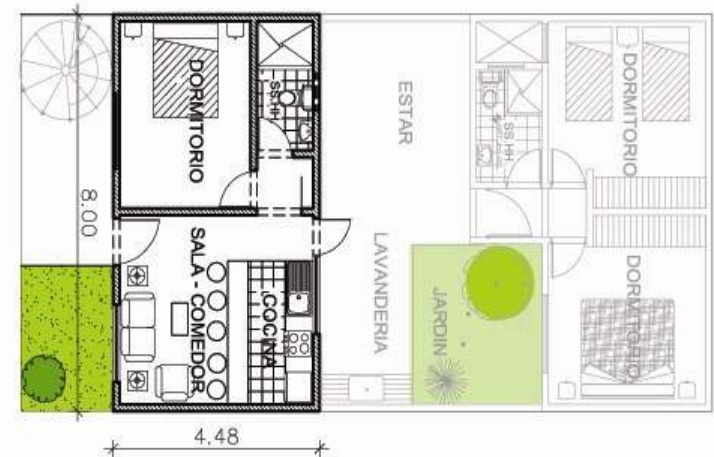


# HOUSING PROGRAMME WITH GENDER EQUITY

VIVIENDA  
**TIPO 1**  
40 m<sup>2</sup>



VIVIENDA  
**TIPO 2**  
40 m<sup>2</sup>





# THE TRAINED PEOPLE IS INVOLVED IN THE DEVELOPMENT OF THE COMMUNITY



**The trained people obtain  
local employment**



**COMEDOR POPULAR**

## THE TRAINED PEOPLE IS INVOLVED IN THE DEVELOPMENT OF THEIR COMMUNITY



**Data Room of the  
School 5130 in  
Pachacutec city**



## EDUCATIVE INFRASTRUCTURE



# THE TRAINED PEOPLE PARTICIPATE IN THE DEVELOPMENT OF THE COMMUNITY



**Ecological Park in  
The Pachacutec  
city**



**PARQUE ECOLÓGICO**