

# BANGLADESH LOCAL DISASTER RISK REDUCTION FUND COMPREHENSIVE DISASTER MANAGEMENT PROGRAMME

*Versatile financing for local level small to medium scale interventions for disasters and climate change risk reduction*

The Local Disaster Risk Reduction Fund (LDRRF) is a funding mechanism established jointly by Government and the donors in the Comprehensive Disaster Management Programme (CDMP) to provide resources and financial supports for the most vulnerable communities in the form of grants to broaden and strengthen their coping capacities against disaster and climate change.



Governed by a Technical Committee and the Approval Committee, the grant is awarded to DRR/CCA small/medium projects that are developed based on the Risk Reduction Action Plans (RRAPs) developed through Community Risk Assessment (CRA) methodology; aligned with other community needs; and being endorsed by the Union Disaster Management Committees (DMCs).

LDRRF's supporting the DRR/CCA interventions contributes to the strengthening of the institutional capacity of DMCs at Union, Upazilla (municipality) and District levels as well as of the NGOs/CBOs. The bottom-up process contributes to building leadership, facilitating community's pro-active involvement, and encouraging the application of indigenous coping mechanisms to be part of risk reduction initiatives. LDRRF also enables the DMCs integrate the RRAP into the local development planning processes.

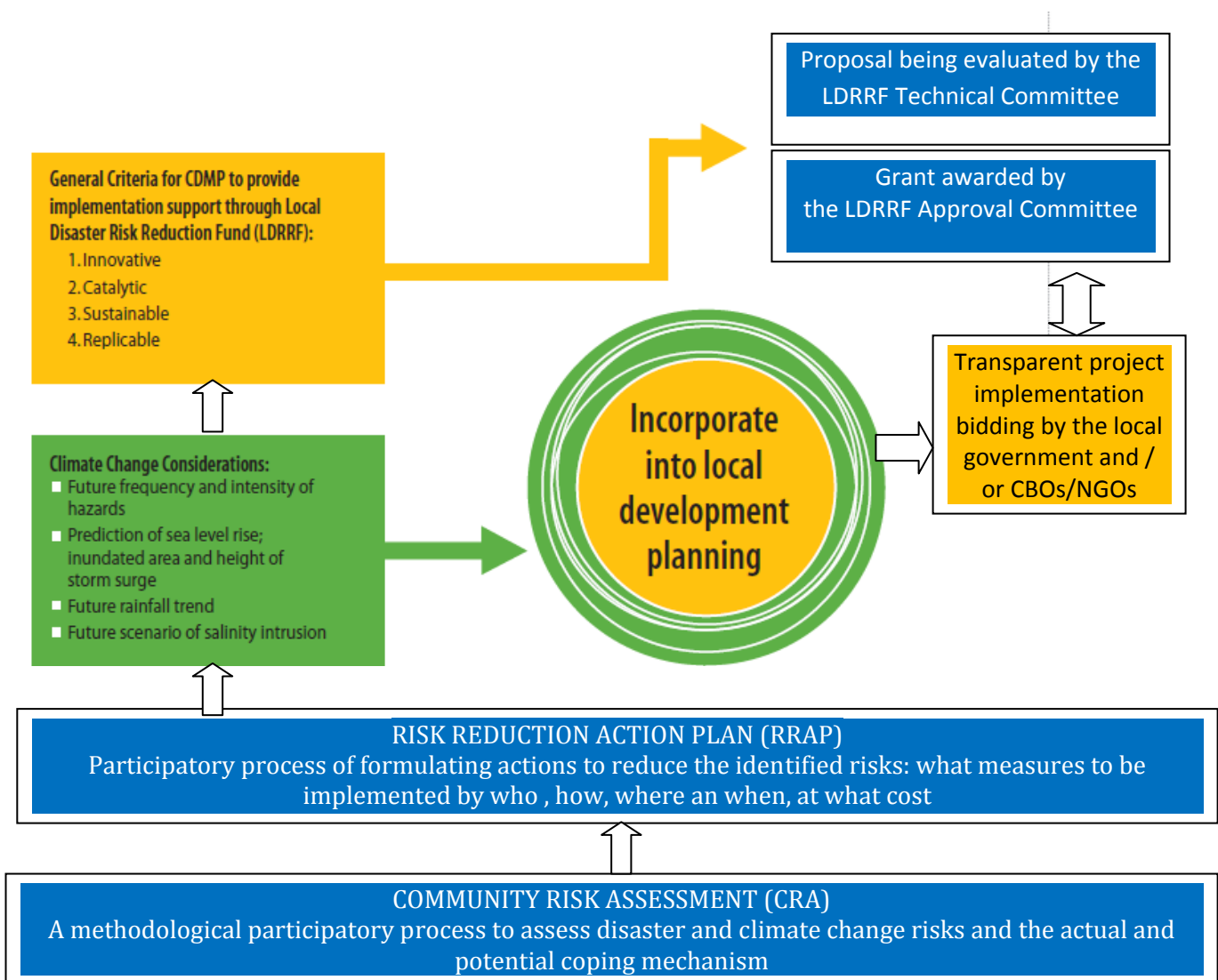
The LDRRF finances projects that benefit the most vulnerable particularly the disabled, widows, landless, poor and women headed families. During 2005-2009 LDRRF supported more than 560 small / medium scale projects in more than 380 Unions in 11 districts benefitting over 600,000 vulnerable people. DRR/CCA projects were implemented through the partnership of NGOs and Union DMCs. In addition, LDRRF also funded action / research projects



## THE COMPREHENSIVE DISASTER MANAGEMENT PROGRAMME (PHASE II)

Disaster Management & Relief Division  
Ministry of Food and Disaster Management





**The typical funded DRR/CCA interventions:**

- Awareness raising and community volunteers;
- Alternative / resilient livelihood options
- Plantation/forestation
- Emergency evacuation route to emergency shelter
- Plinth & ground raising above flood/storm surge level
- Cyclone resistant housing components
- Improve access to safe drinking water
- Water clogging drainage
- Mobile school and reduction of childbirth mortality

**The State of Play & Prospect of LDRRF**

LDRRF's second phase (2010 – 2014) is scaling up the DRR/CCA interventions to benefit at least 10 million people spread across 40 districts. It creates windows for additional funding envelope with the prospects of attracting resources from donors. LDRRF is taking preliminary steps to transform itself into sustained and independent social fund complementing government safety net programmes.