

Plan for Professional Certificate Programme for Urban Disaster Risk Management Specialist

Yasuo Tanaka (RCUSS, Kobe Univ.)

A decorative graphic consisting of several thin, overlapping lines in shades of orange and red, extending horizontally across the lower half of the slide. On the right side, there is a larger, stylized circular shape made of similar overlapping lines, resembling a partial ring or a stylized 'U'.

How it has started?

- The Certification Program was first suggested by World Bank Institute and EMI in early 2007 as an initiative to support the implementation of the HFA, and followed by 1st meeting in April 2007 in Kobe grouping UN-ISDR Secretariat, ProVention Consortium, World Bank Institute, UNDP/BCPR, EMI and Kobe University
- In November 2007, a draft concept was discussed among the above group during a full day meeting in Geneva

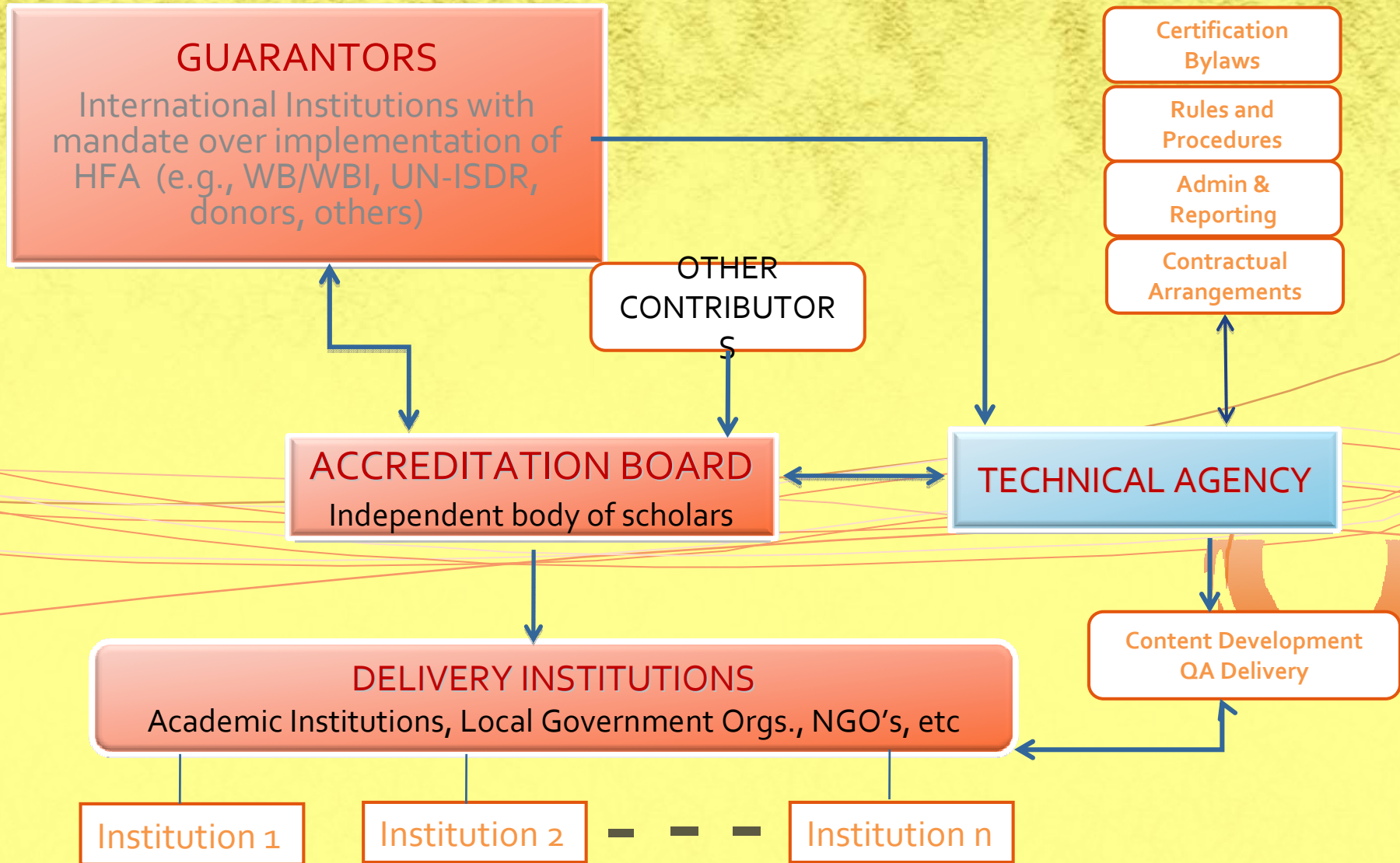
Why a Global Professional Certification Program ?

- Human resources are the biggest asset of a country. The implementation of the HFA will be slow to accomplish without the availability of competent DRM professionals
- DRM profession needs to be valued for its contribution to society
- Certification will scale-up the contributions of the schools and universities that are currently providing specialized DRM training

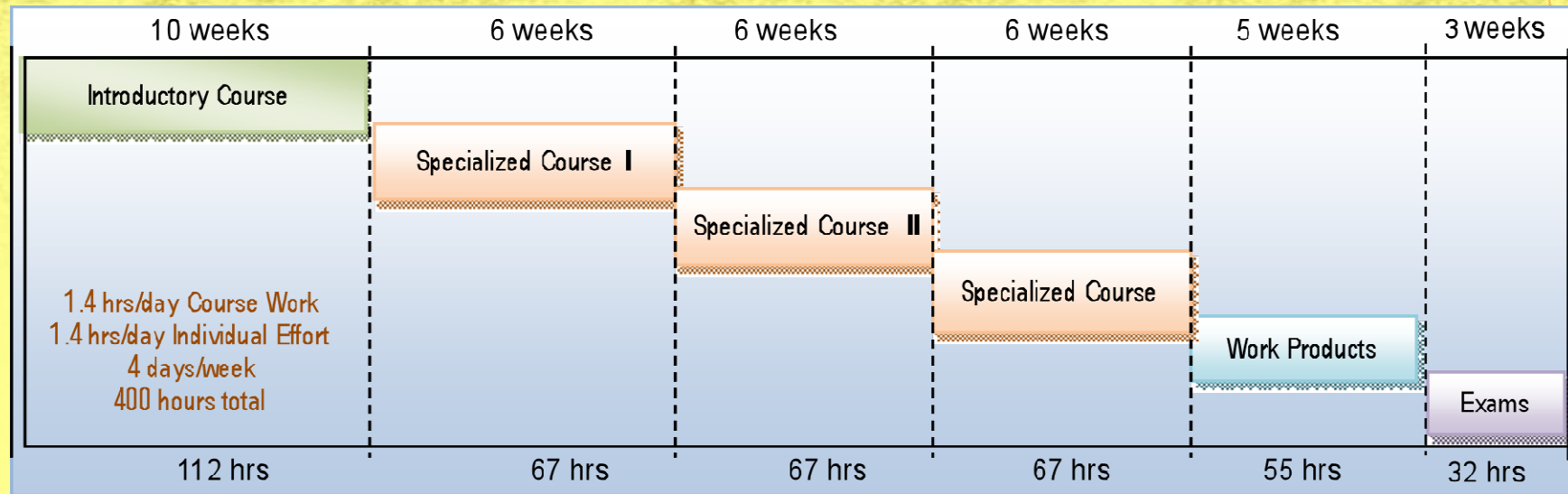
How would it work?

- The professional certification program would be independently administered and delivered through an Accreditation Board
- The program would be backed by “Guarantors”
- The Board would be supported by an Administrative Agency
- The Board will accredit Delivery Institutions which will deliver the course

Structure



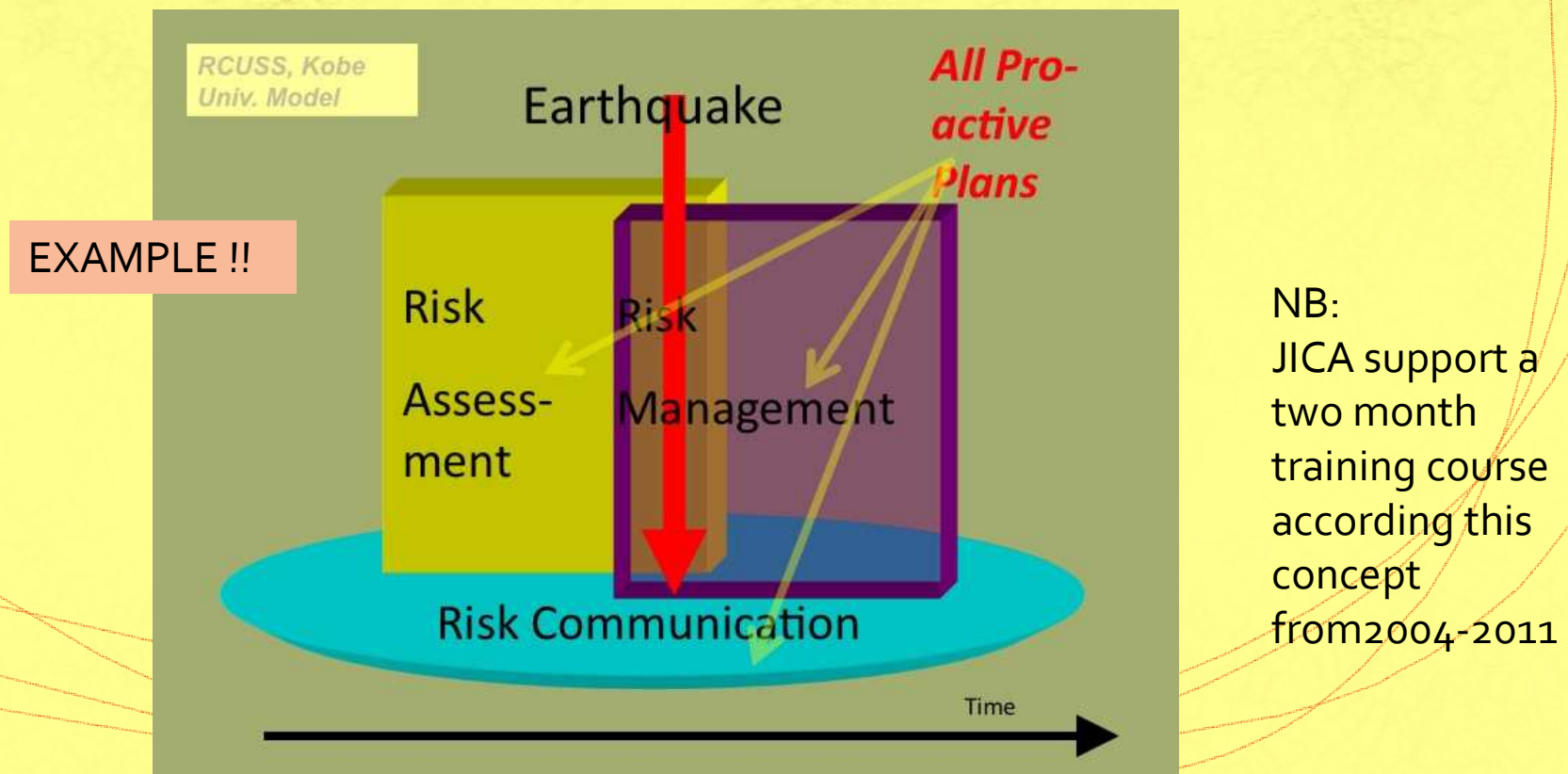
Courses & Requirements



	Number of Hrs	Hrs/Day	No. of Days	Days/Week	No. of Weeks	
Course Work	200	1.4	143	4	36	3 Sessions of 12 Weeks Each
Individual Work	200	1.4	143	4	36	

Introductory Course

- Should teach Holistic & Pro-Active Approach for Urban Disaster Risk Reduction



Example of Specialized Course

Various E-Learning Courses are available (WBI, EMI, etc) that need to be re-structured to satisfy the course requirements.

(Taking an earthquake hazard as an example subject)

	Risk Assessment	Risk Management	Risk Communication
Hardware	Study on Fault, Seismic Motion, Geotechnical & Geophysical data, Aseismic Design of Buildings & Infrastructures	Rescue Robots, Evacuation Shelters for Tsunami & Earthquake	
Software	Damage Analysis, Network Analysis of Lifelines	Emergency Response, Rescue Medical Responses & Treatment, Health Monitoring. Reconstruction Town Planning, Economical Recovery, Legal issue, International Rescue & Cooperation	Emergency Communication, Disaster Information Sharing,
Human-ware		Volunteers, NPO & NGO, Community participation, Disaster Prevention Community	Education of Disaster Prevention, Culture of Disaster, Disaster Damages of Historical Monuments and Buildings

Where the PCP Program Stands Now?

- On March 29, 2009, a wider group of interested organizations gathered in Kobe to discuss the details of the PCP program.
- Mechanisms for Funding & Certification still need to be firmed out.
- Limited pilot testing of PCP program will be undertaken in 2010.
- More involvement is sought, such as professional organizations, academic institutions, local government orgs, others...

