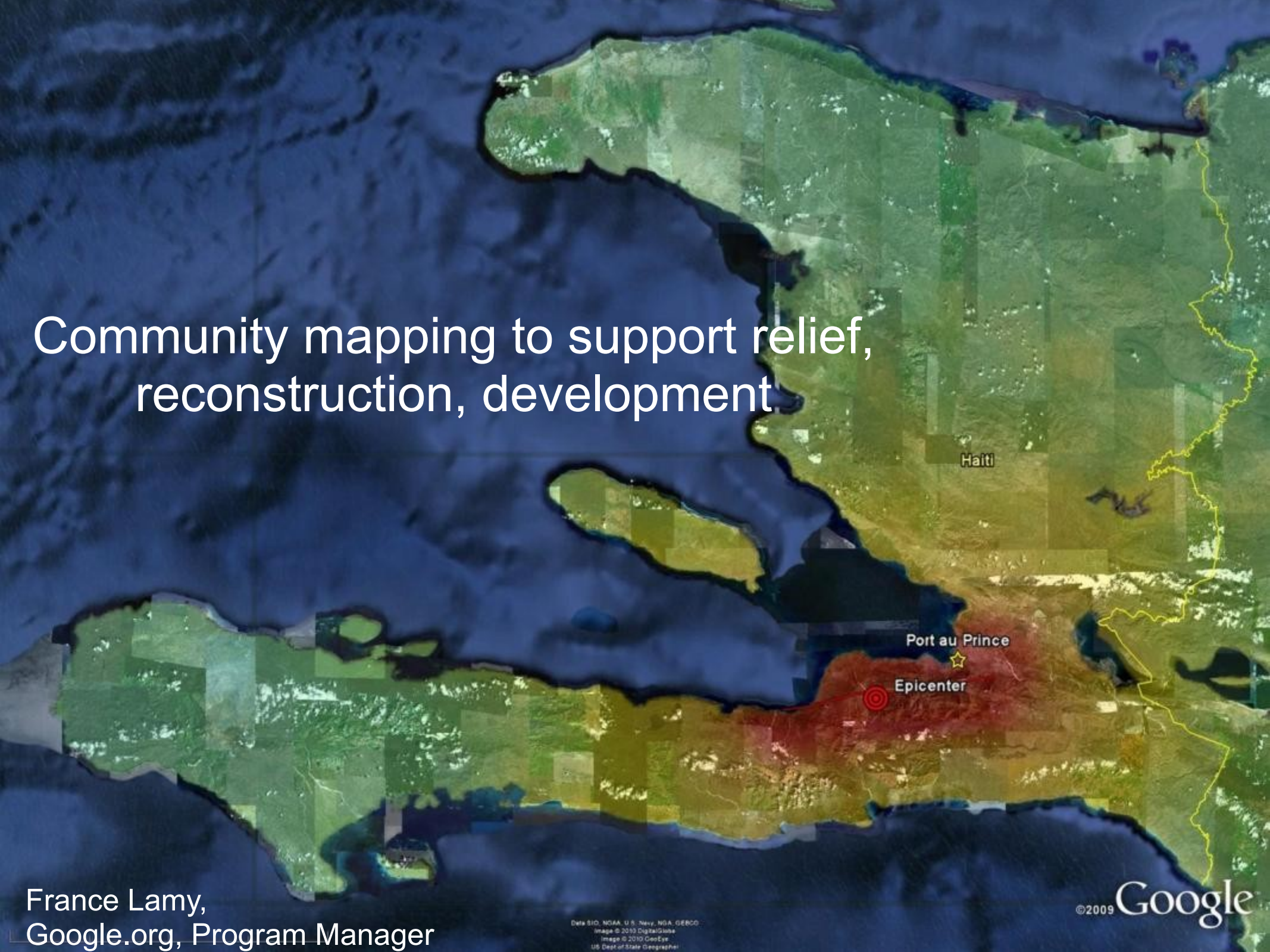


# Community mapping to support relief, reconstruction, development



# Map Maker

-- Crowdsourcing baseline / curated data --

Google map maker   [Browse the map](#) [Advanced Search](#)

Updates | [My Edits](#) | [Community Edits](#) | [Directions](#) No changes pending approval in this view or your neighborhoods [Show External tiles](#) [Print](#) [Link to this page](#)

Current Location: Bur Dubai

**Adding Hospital**

Name [Add more names](#)

Language  Type

**Attributes**

Category  Accuracy  Popularity

Additional Categories

Working hours

Photo URL

**Street Address**

Plot #  Street Name

Contributed by [Sarfaraz Qasbi](#), [Ibraraga](#), [Thobias](#) and others

©2011 Google - Europe Technologies, Inc. Street View, DigitalGlobe, GeoEye, etc.

# Map Maker

-- Crowdsourcing baseline / curated data --

You know your part of the world  
better than any body else



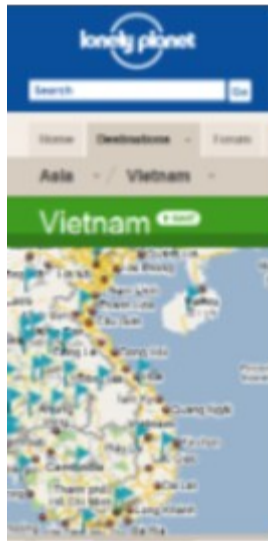
We provide a way for anyone to share what they know  
with the rest of the world



# Map Maker data has Reach...

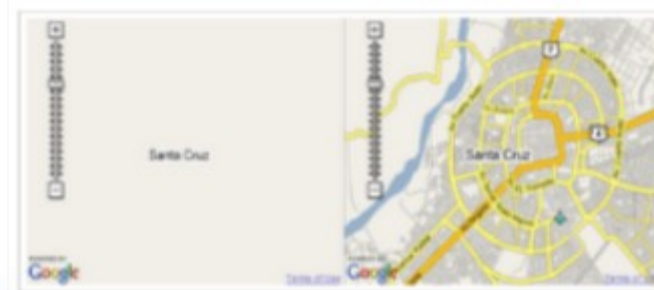
Google  
Map Maker

Google Maps API

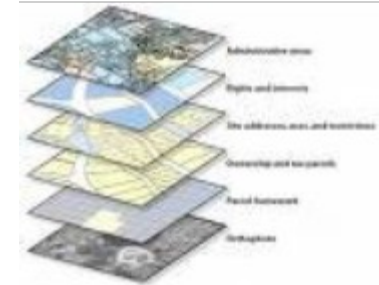


Map Maker Data Download

Google Maps



& Google Earth



Google Maps for Mobile



Google™

# Google Mission Statement

---

Organize the world's (**geographic**) information and  
make it universally accessible and useful



# Map Maker is more than a tool, it's also a diverse and global community

**1** We are helping to strengthen in-country geospatial communities, that will remain engaged over time

**2** We are working and partnering with mappers (local/diaspora), UN, NGOs, start-ups, data providers, and more –  
-- to create and enable more content online  
-- to develop a product that is locally meaningful

**3** We are working with universities : raising the level of curriculum for geospatial technologies -- encouraging innovation and entrepreneurship



# Map Maker is more than a tool, it's also a diverse and global community

**1** We are helping to strengthen in-country geospatial communities, that will remain engaged over time

**2** We are working and partnering with mappers (local/diaspora), UN, NGOs, start-ups, data providers, and more –  
-- to create and enable more content online  
-- to develop a product that is locally meaningful

**3** We are working with universities : raising the level of curriculum for geospatial technologies -- encouraging innovation and entrepreneurship



# Concrete applications



180+ countries, in 60 languages!







Pre-Earthquake - Aug 26, 2009



1 Day After Earthquake - Jan 13, 2010

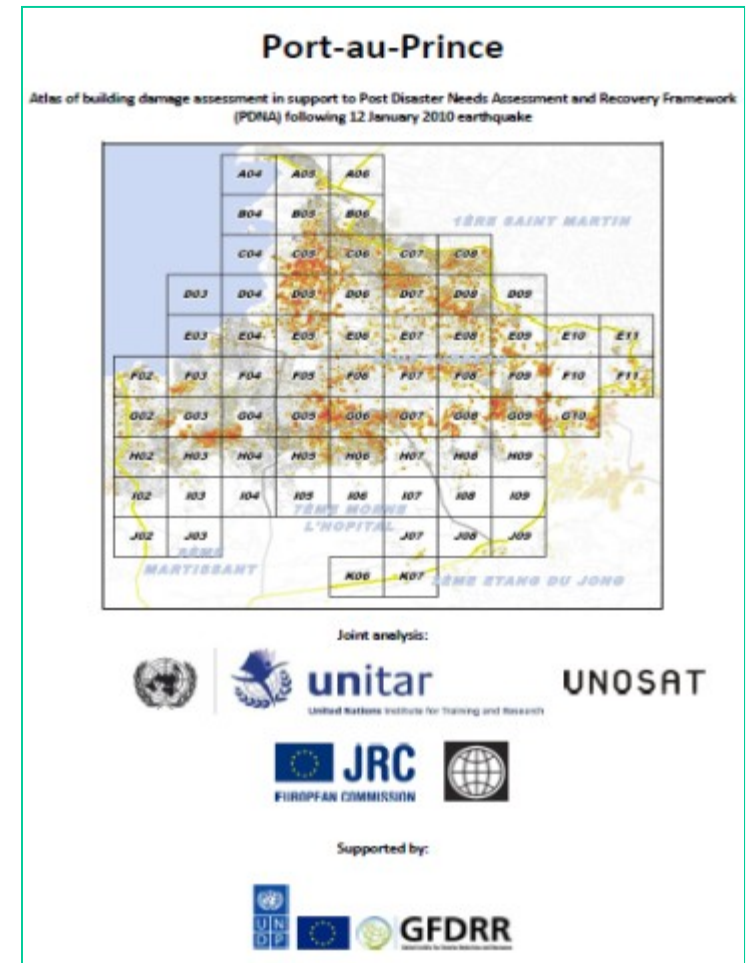
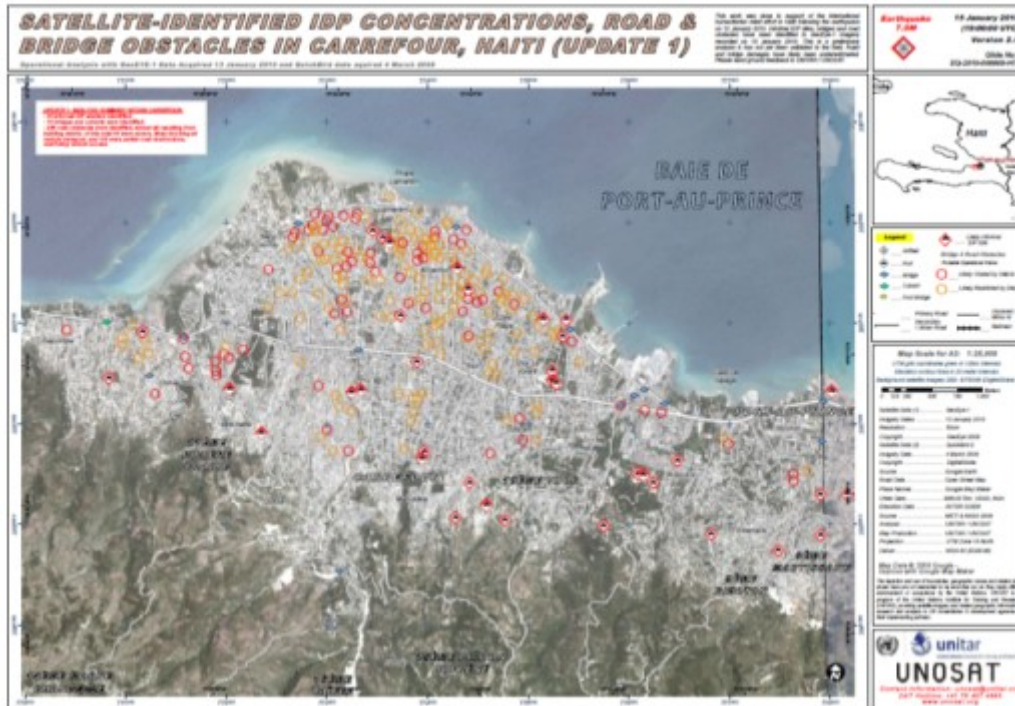
Haiti



13 Days After Earthquake - Jan 25, 2010

Google™

# Damages assessments UNITAR, JRC, World Bank



Map Maker data put to use in Haiti

# The Pakistani community

local.com.pk  
Beta

Local.com.pk/

Latest News: | نئی کے 'محلے'، نین پاکستانی اپکار پاکستان

powered by  
Google™

The screenshot displays a Google Maps interface with a sidebar on the right containing disaster relief data. The map shows South Asia, including Pakistan, India, and parts of China and the Middle East. The sidebar is titled 'Relief Activities' and lists several organizations and their activities with dates. Below this is a 'Flood Analysis' section with a legend and a list of affected districts. At the bottom of the sidebar, there are sections for 'LINTAR / UNOSAT' and 'Pacific Disaster Committee'.

**Relief Activities**

- PRCS Nationwide 28/08/2010 z
- BKTEF Medc Camps 01/10/2010 z
- BKTEF Relief Camps 01/10/2010 z
- PKSA Relief Activity 01/10/2010 z

**Affected districts**

Most Less

EDC 08/09/2010

- Highly affected (+)
- Highly-Medium affected (+)
- Medium affected (+)
- Less affected (+)

**Flood Analysis**

Pak Met / OCHA / Google

- Dams/Barrages Status 04/09/10

**LINTAR / UNOSAT**

- Sukkur Barrage - 22/08/2010
- Sukkur Barrage - 24/08/2010
- Roads Status - 22/08/10
- Bridges Status - 22/08/10
- Medium flood extent - 25/08/10
- Medium flood extent - 02/09/10

**Pacific Disaster Committee**

- DP Camps 02/09/2010 @ EDC
- Intermittent Impact - 17/08/2010
- Moderate Impact - 17/08/2010
- Heavy Impact - 17/08/2010
- Rivers Normal Flow

**Current Satellite Updates**

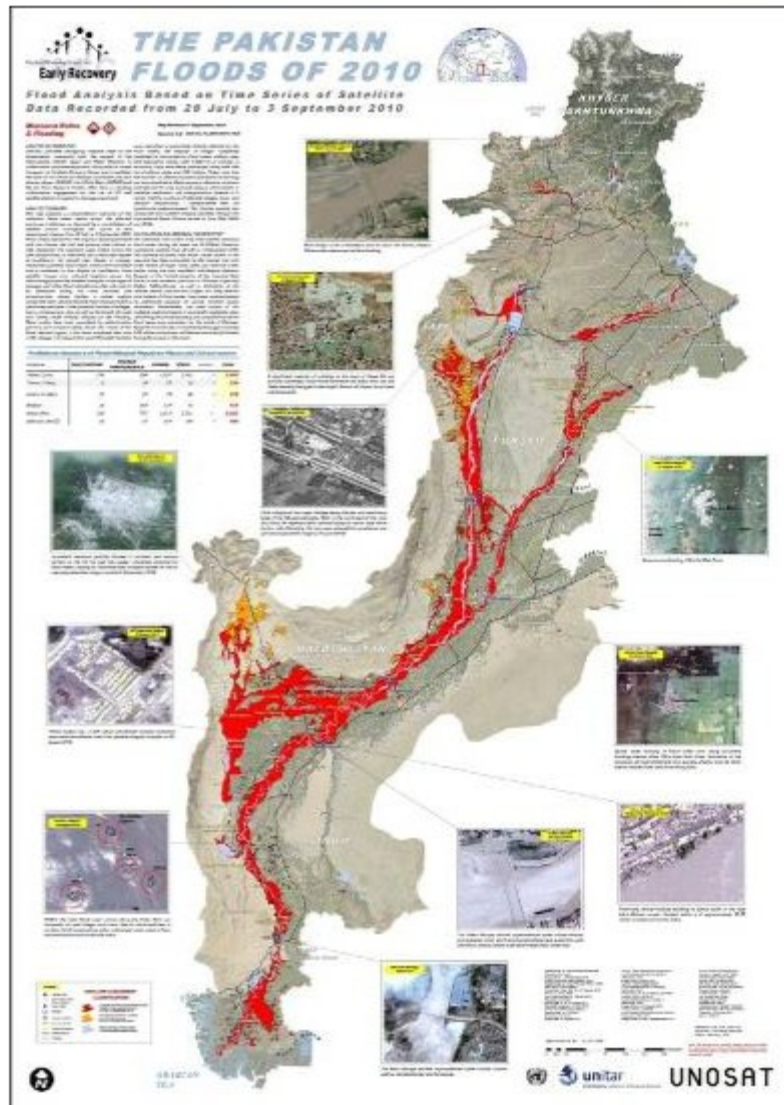
- Current clouds status - Google



# The Map Maker community responds to 2010 landslides, Atta Abad, Pakistan



# UNOSAT's use of Google Map Maker Data for Pakistan Floods 2010



- UNOSAT Analysis of satellite imagery over flood-affected areas was improved by detailed geographic data about population, transportation and infrastructure from Google Map Maker
- 20 mapping products
- 40,000 downloads for Pakistan
- 800,000 people received assistance due to the availability of Map Maker data

# Use of Google Maps & Earth for Relief, reconstruction

## WHAT YOU SEE ABOUT FLOODS

# SMS TO 3441

[ FL + Your Message + Exact Location ]

Official website of Imran Khan Foundation

## IMRAN KHAN FOUNDATION

Home About IKF Donate IKF Relief Map Flood Resources Contact

### IKF Relief Map

**HOW TO**

1. By sending SMS
2. By filling
3. Calling or
4. Sending Message

FOR PAYPAL USERS:  
**\$3,716,097.90** collected by [IKF USA](#) chapter till Sept 28, 2010. Please contribute using Paypal

[Donate](#)

FAN US ON FACEBOOK

Find us on Facebook

Imran-khan-foundation

You like this. Unlike

930 people like Imran-khan-foundation

Fahar Hasan Obed Polon Hani

Anwar Fazal Ghazanfar Khudro

Facebook social slash





RESEARCH

UNOSAT

- Our Events
- ▶ Home
- ▼ Maps
  - Maps
  - Haiti Data
  - Sudan Data

Home > Maps >

**Common and Fundamental Operational Datasets for North Africa**

**Overview**



The IASC Guidelines on Common Operational Datasets (CODs) in Disaster Preparedness

**UNOSAT Maps: Libya**

- Conflict Analysis: Zawiyah, Libya (as of 08 March 2011)
- Benghazi Airport Satellite Reference Map
- Current Security

**Transportation Network**

Country Region Source

Country	Region	Source	Title	Abstract	Links	Date of Dataset
Egypt, Libya, Tunisia		OurAirports.com	Airports, airfields, heliports, balloonports, and seaplane base locations	Locations for 910 airports, airfields, heliports, balloonports, and seaplane base locations from the OurAirports.com community.	Zipped shapefile.	February 2011
Egypt, Libya, Tunisia		Digital Aeronautics Flight Information File	Runway polygons and lengths.	Runway polygons and lengths for 744 airports and airfields.	Zipped shapefile.	2006
Egypt		OpenStreetMap and roadMade	Transportation Features from OpenStreetMap	Vector data for roads, railroads, and other transportation features generated by the OpenStreetMap community.	Shapefile, XML, and more.	Today
Libya, Tunisia		Google MapMaker	Transportation Features from Google MapMaker	Vector data for roads, railroads, and other transportation features generated by the Google MapMaker community.	Zipped KML and shapefile	February 2011



# Humanitarian & Development Orgs, Civil Society team up to build better maps for Sudan



Actor George Clooney has focused on Darfur through his organization Not On Our Watch.





# Humanitarian efforts // disaster preparedness

## Let's build a better map of Sudan

### Imagery acquisition

- 125 000+ sqkm of historical & fresh imagery over Southern Sudan
- This new imagery is covering about 40% of the crisis areas

Google Map Maker

www.google.com/mapmaker/pulse

Chad

© 2011 LeadDog Consulting  
© 2011 Google  
© 2011 Europa Technologies  
US Dept of State Geographer

Red Sea

Eritrea Asmara

San'a'a

Google

By Brigitte  
-20 secs ago  
Published

Road Ash Shamaliyah, Sudan.  
(Added)

Google map maker

Showing edits by: all users

43%

10:40 PM  
5/9/2011

# A global community

## In Africa, citizen cartographers tell their stories through their maps

Monday, November 22, 2010 at 2:00 PM

Earlier this month, we invited 60 of [Google Map Maker's](#) top users in Africa to a community workshop in Nairobi. The event celebrated the contributions of exceptional mappers from across Africa who have collectively mapped hundreds of thousands of roads, cities and buildings, covering more than half the population in Africa. Participants from places including Burkina Faso, the Democratic Republic of Congo, Ethiopia, Gambia, Kenya, Morocco, Uganda, Rwanda, and Tanzania came together for this unique and inspiring opportunity to tell their stories, learn from each other, and share their mapping experiences using Google Map Maker. Check out the [the Super Mappers Conference](#) site for more details.



*...I'm used to seeing maps and thinking of them as a collection of edits or points of interests. They're alive, they're personal, and they tell the stories of the people who create them...*

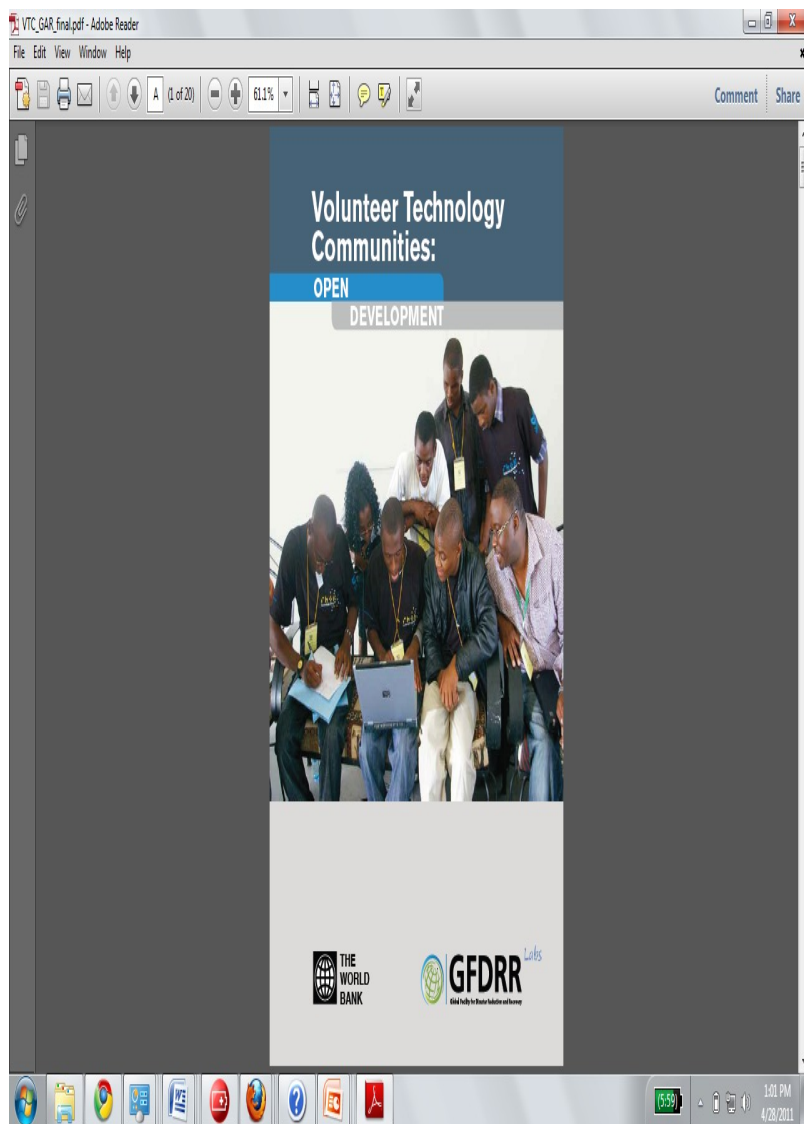
[sites.google.com/site/mapyourworldcommunity/](http://sites.google.com/site/mapyourworldcommunity/)

Google™

# Volunteer Technology Communities

The use of Volunteer Technology Communities (VTCs) made possible by new Web 2.0 technologies present a fundamental shift in how we can support Disaster Risk Management and Development programs.

A starting point for discussions of how UN agencies, The World Bank and other organizations might better integrate/use the best parts of these VTCs going forward.



A decorative header featuring four overlapping semi-circles in light green, light blue, light red, and light yellow, positioned along the top edge of the slide.

# Thank you!

---

Please contact us for questions, requests, and suggestions

France Lamy  
[flamy@google.com](mailto:flamy@google.com)

The Google logo, featuring the word "Google" in its characteristic multi-colored font (blue, red, yellow, blue, green, red) with a trademark symbol (TM) to the right.

Google™