

Waste Hotline

Using Geographic Information Systems (GIS)
to reduce public health risk from solid waste
in Haiti

Or.....

Putting the 'Where?' in the 'Who?, What? and Where?'

Rob Watts – Disaster Waste Recovery (DWR)

Waste Hotline

Using GIS technology to reduce public health risk in Haiti

Problem

- No solid waste removal service for a large number of camps
 - Solid waste build up and associated public health risk

Waste Hotline

Using GIS technology to reduce public health risk in Haiti

Problem

- No solid waste removal service for a large number of camps
 - Solid waste build up and associated public health risk

Tasks

- Identify non-served camps
- Design, commission and manage solid waste collection and disposal service.

Waste Hotline

Using GIS technology to reduce public health risk in Haiti

Problem

- No solid waste removal service for a large number of camps
 - Solid waste build up and associated public health risk

Tasks

- Identify non-served camps
- Design, commission and manage solid waste collection and disposal service.

Solution

- Initiate information collection, storage and management
- Design a simple, robust web-based GIS system.
- Install system, train staff and provide monitoring.



Waste Hotline

Using GIS technology to reduce public health risk in Haiti



Logged in as GIS [Logout](#)

[Search](#)

Ranmasé Fatra - Demo

[SUPERVISOR](#) [DAILY TASKS](#) [PAYMENTS](#) [REQUESTS](#) [PURGE CONTENT](#)

Home » Supervisor

Supervisor Administration Panel

[View](#) [Clone](#) [Export](#)

Submitted by System Admin on Tue 15 Mar 11 06:10

Latest Waste Requests

Requests made by camps that do not have a contractor allocated for collection.

[Create new Waste Request >](#)

Priority
<Any>

Status
Raised [Reset](#)

Requested	Camp Name	Volume	Priority	Raise collection
6 weeks 1 hour ago	Barbancourt # 17	20m3	Important	+New task
6 weeks 2 hours ago	Barbancourt # 17	20m3	Important	+New task
6 weeks 2				

Disposal Tasks

Current and upcoming tasks that have been allocated to contractors

[Create new Disposal task >](#)

No collection/disposal tasks

[more](#)

Today's Tasks

No collection/disposal tasks scheduled today

[more](#)

Waste Hotline

Using GIS technology to reduce public health risk in Haiti

Daily feedback

View

Clone

Export

Submitted by System Admin on Mon 14 Mar 11 07:18

Today's Disposal Tasks

No collection/disposal tasks scheduled today

[more](#)

Waste Request Collection Validation

No tasks to be verified

[more](#)

Disposal Tasks Validation

No disposal tasks to be verified

[more](#)

Contractor List

Create new Contractor entry >

Current Performance

Good

Reset

	Price	Performance	Comments
Jedco [Edit]	\$120	Good	0 Add new comment

[more](#)

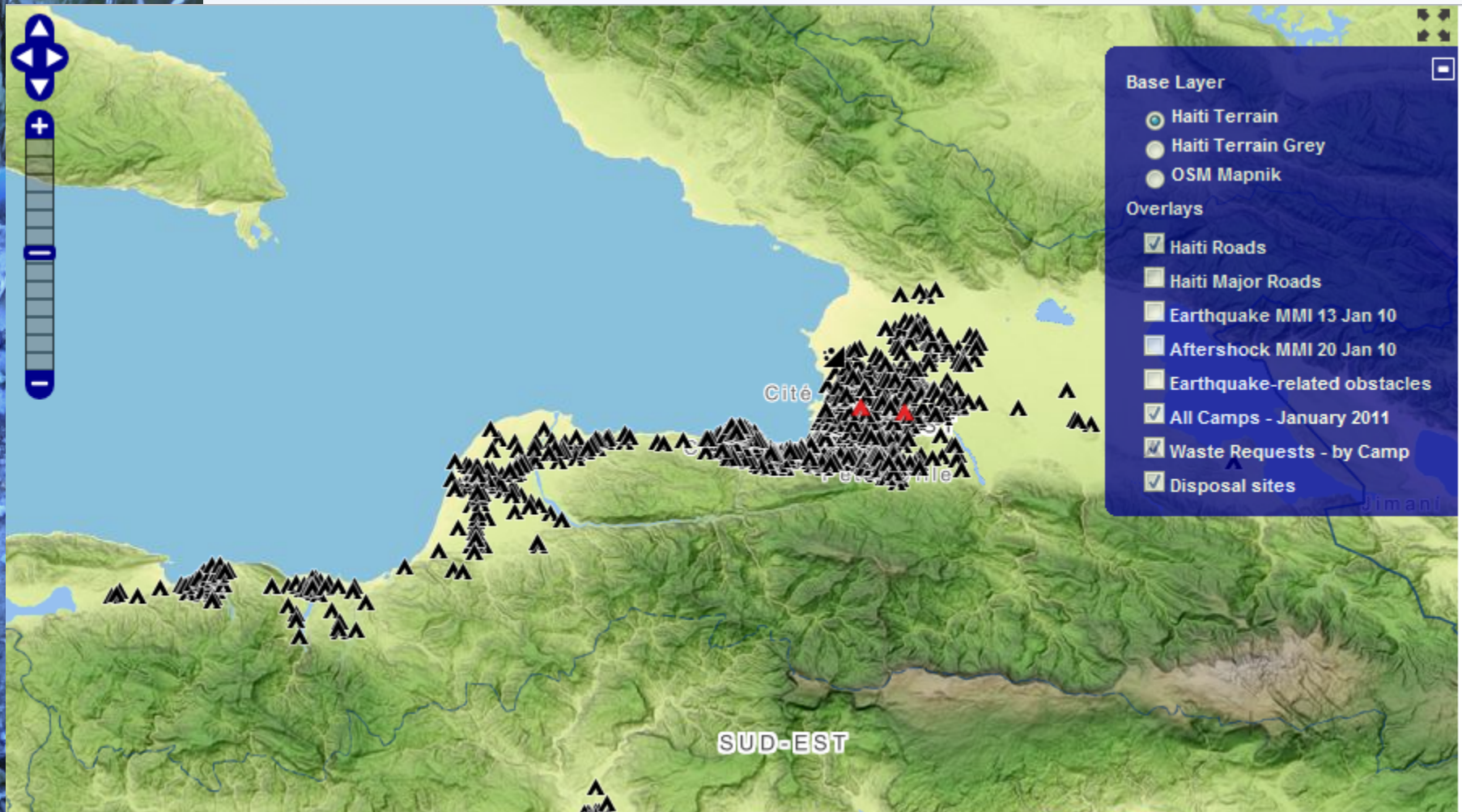
GPS Data

Upload a GPS track

 Français

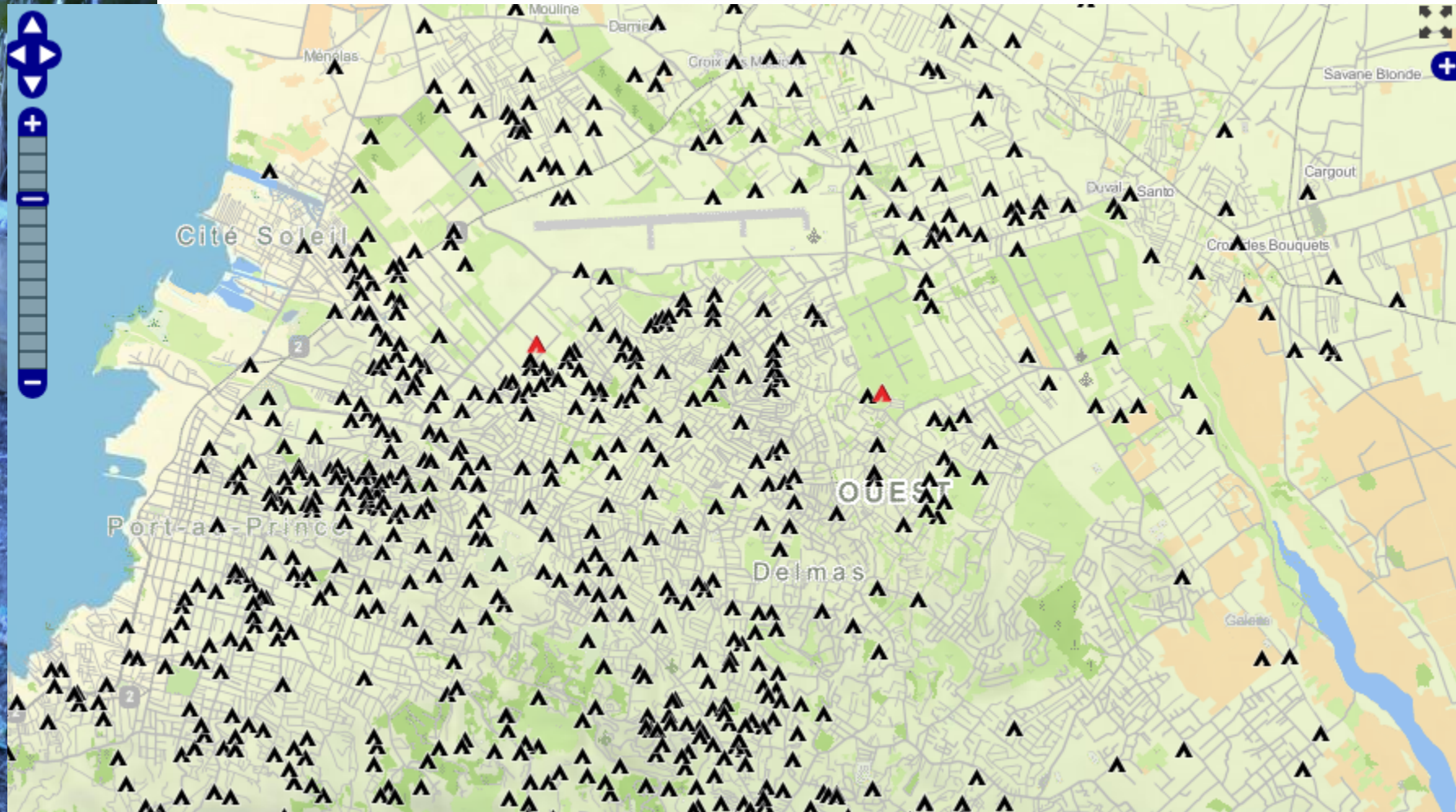
Waste Hotline

Using GIS technology to reduce public health risk in Haiti



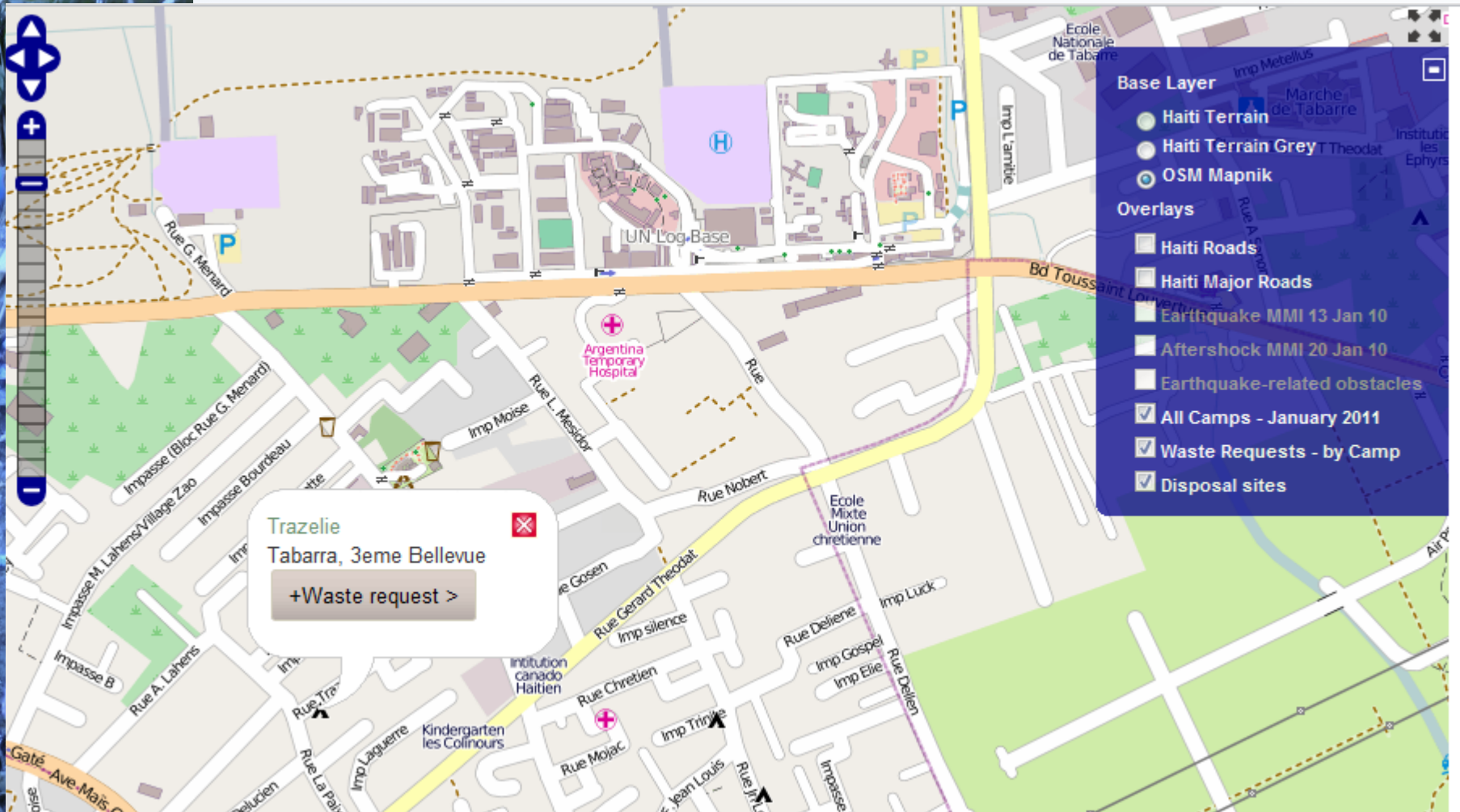
Waste Hotline

Using GIS technology to reduce public health risk in Haiti



Waste Hotline

Using GIS technology to reduce public health risk in Haiti



Waste Hotline

Using GIS technology to reduce public health risk in Haiti

GPS Tracks

Tracks more than 12 weeks old are removed from the database automatically. The original files remain st

Upload a GPS track

Inspector

<Any>

Apply

Track ID	Inspector	Date uploaded	Posted date	Track data
5884		Sunday, March 27, 2011	27 Mar 11 14:07	View track
6379	Claudel Laguerre	Monday, March 28, 2011	28 Mar 11 11:57	View track
6380	Barry	Monday, March 28, 2011	28 Mar 11 11:57	View track
6481	elvariste joseph odanier	Monday, March 28, 2011	28 Mar 11 11:57	View track
7108	muller jean	Monday, March 28, 2011	28 Mar 11 12:00	View track
7559	morisseau jean claude junior	Monday, March 28, 2011	28 Mar 11 12:08	View track
8997	elvariste joseph odanier	Tuesday, April 5, 2011	05 Apr 11 16:18	View track
9048	Claudel Laguerre	Wednesday, April 6, 2011	06 Apr 11 14:46	View track
9149	Claudel Laguerre	Wednesday, April 6, 2011	06 Apr 11 14:56	View track
9250	elvariste joseph odanier	Wednesday, April 6, 2011	06 Apr 11 15:24	View track
9251	muller jean	Wednesday, April 6, 2011	06 Apr 11 15:34	View track

Waste Hotline

Using GIS technology to reduce public health risk in Haiti

GPS Tracks

Tracks more than 12 weeks old are removed from the database automatically. The original files remain st

Upload a GPS track

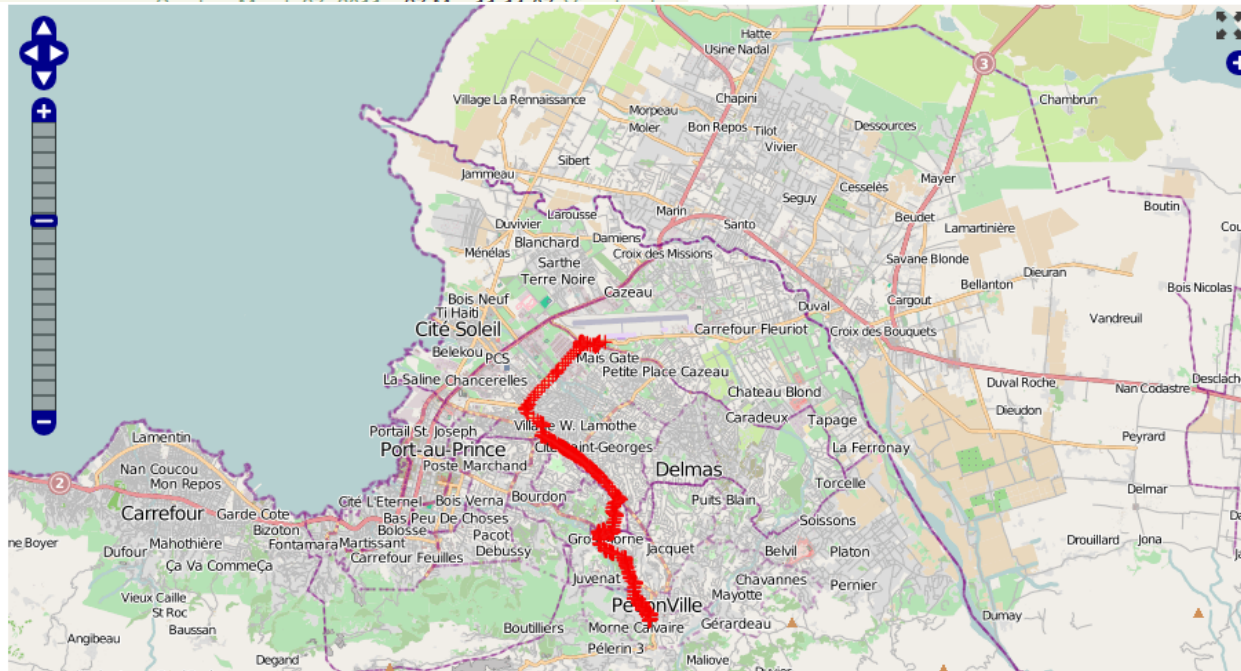
Inspector

<Any>

Apply

Track ID Inspector Date uploaded Posted date Track data

5884				
6379	Claudel Lag			
6380	Barry			
6481	elvariste jos			
7108	muller jean			
7559	morisseau j			
8997	elvariste jos			
9048	Claudel Lag			
9149	Claudel Lag			
9250	elvariste jos			
9251	muller jean			



Waste Hotline

Using GIS technology to reduce public health risk in Haiti

GPS Tracks

Tracks more than 12 weeks old are removed from the database automatically. The original files remain st

Upload a GPS track

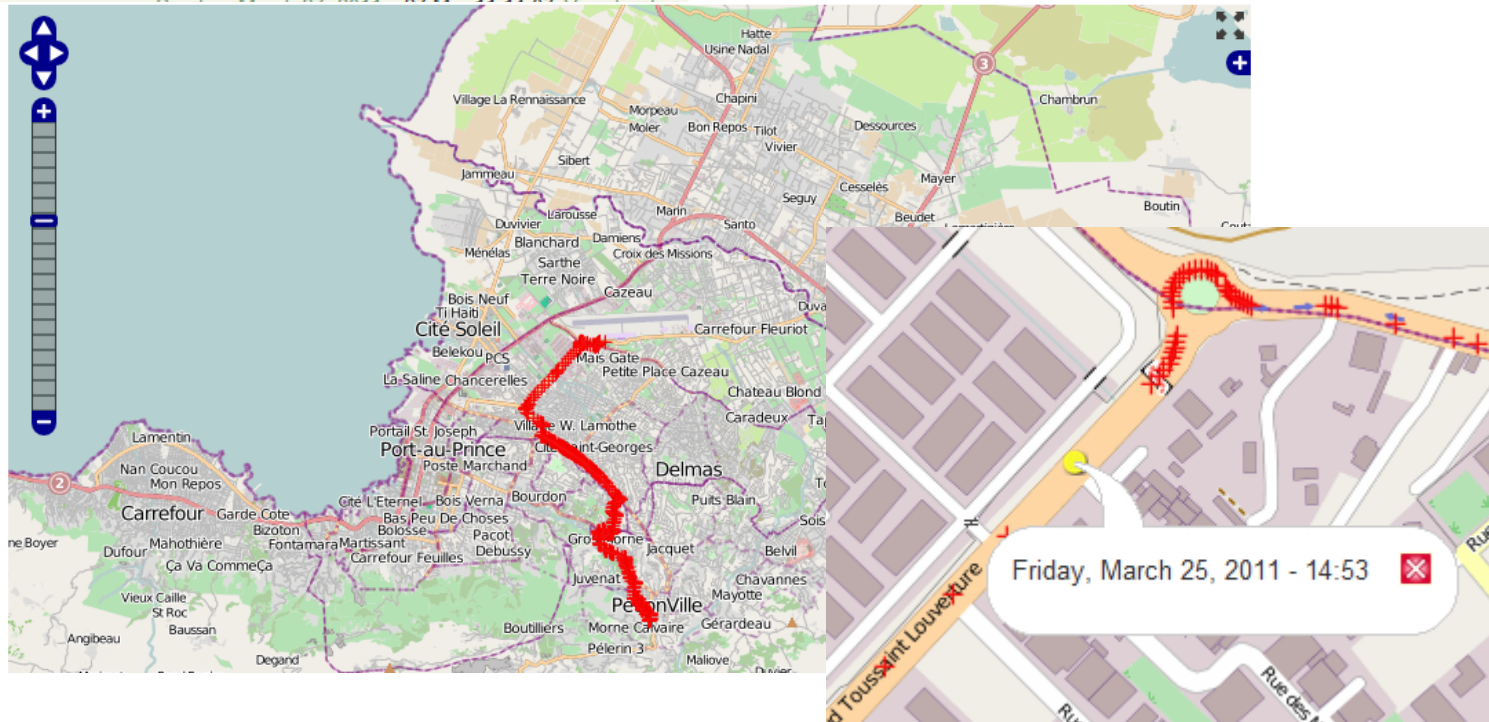
Inspector

<Any>

Apply

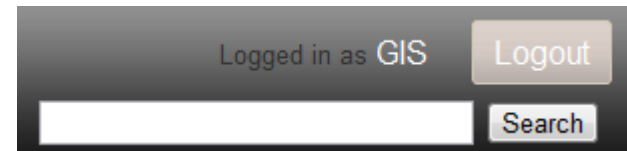
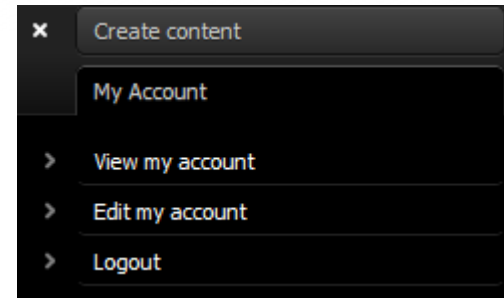
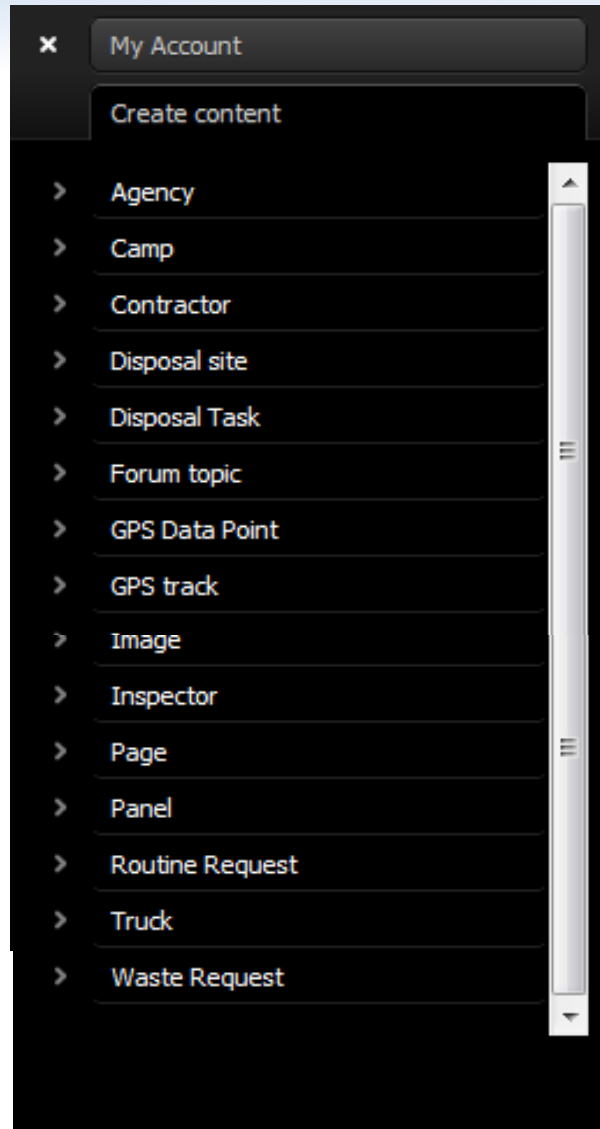
Track ID Inspector Date uploaded Posted date Track data

5884				
6379	Claudel Lag			
6380	Barry			
6481	elvariste jos			
7108	muller jean			
7559	morisseau j			
8997	elvariste jos			
9048	Claudel Lag			
9149	Claudel Lag			
9250	elvariste jos			
9251	muller jean			



Waste Hotline

Using GIS technology to reduce public health risk in Haiti



Waste Hotline

Using GIS technology to reduce public health risk in Haiti

Payments to Contractors

[View](#)

[Clone](#)

[Export](#)

Submitted by System Admin on Sat 19 Mar 11 11:16

Disposal Tasks Payment

Current state

<Any> ▼

Paid

False ▼

[Reset](#)

No disposal tasks to be paid

[more](#)

Completed Tasks

Current state

<Any> ▼

[Apply](#)

No disposal tasks of this status

[XLS](#) [CSV](#)

[more](#)

Today's Collection Tasks

No collection/disposal tasks scheduled today

[more](#)

 Français

Waste Hotline

Using GIS technology to reduce public health risk in Haiti

Simplicity

- ✓ Clear control/functionality
- ✓ Fast, efficient data flow control

Waste Hotline

Using GIS technology to reduce public health risk in Haiti

Simplicity

- ✓ Clear control/functionality
- ✓ Fast, efficient data flow control

Flexibility

- ✓ Made to measure
- ✓ Accessible anywhere in world
- ✓ Not limited by software functionality
- ✓ Limited by imagination only

Waste Hotline

Using GIS technology to reduce public health risk in Haiti

Simplicity

- ✓ Clear control/functionality
- ✓ Fast, efficient data flow control

Flexibility

- ✓ Made to measure
- ✓ Accessible anywhere in world
- ✓ Not limited by software functionality
- ✓ Limited by imagination only

Scalable

- ✓ Central core Internet based/vs PC based
- ✓ Operators roles can be multiplied

Waste Hotline

Using GIS technology to reduce public health risk in Haiti

Simplicity

- ✓ Clear control/functionality
- ✓ Fast, efficient data flow control

Flexibility

- ✓ Made to measure
- ✓ Accessible anywhere in world
- ✓ Not limited by software functionality
- ✓ Limited by imagination only

Scalable

- ✓ Central core Internet based/vs PC based
- ✓ Operators roles can be multiplied

Integration

- ✓ Works with traditional DB & GIS technology (Db sharing)

Waste Hotline

Using GIS technology to reduce public health risk in Haiti

Simplicity

- ✓ Clear control/functionality
- ✓ Fast, efficient data flow control

Flexibility

- ✓ Made to measure
- ✓ Accessible anywhere in world
- ✓ Not limited by software functionality
- ✓ Limited by imagination only

Scalable

- ✓ Central core Internet based/vs PC based
- ✓ Operators roles can be multiplied

Integration

- ✓ Works with traditional DB & GIS technology (Db sharing)

Cost effective

- ✓ Software licence
- ✓ Efficient, made to measure, scalable
- ✓ It works

Waste Hotline

Using GIS technology to reduce public health risk in Haiti

Rob Watts

Disaster Waste Recovery

rob@disasterwaste.org