

SENDAI CITY/JAPAN

-To Achieve Recovery as a Disaster-Resistant, Environmentally-Friendly City of a New Level-

Features of Sendai City

- The largest city in the Tohoku region with a population of one million
- Has developed as an economic and administrative center in the Tohoku region
- A city where the natural environment (as the “City of Trees”) and urban functions are integrated
- Home to many universities such as Tohoku University, also known as the “Study Capital”



Damage from the Great East Japan Earthquake

Human damage (As of February 28, 2013)

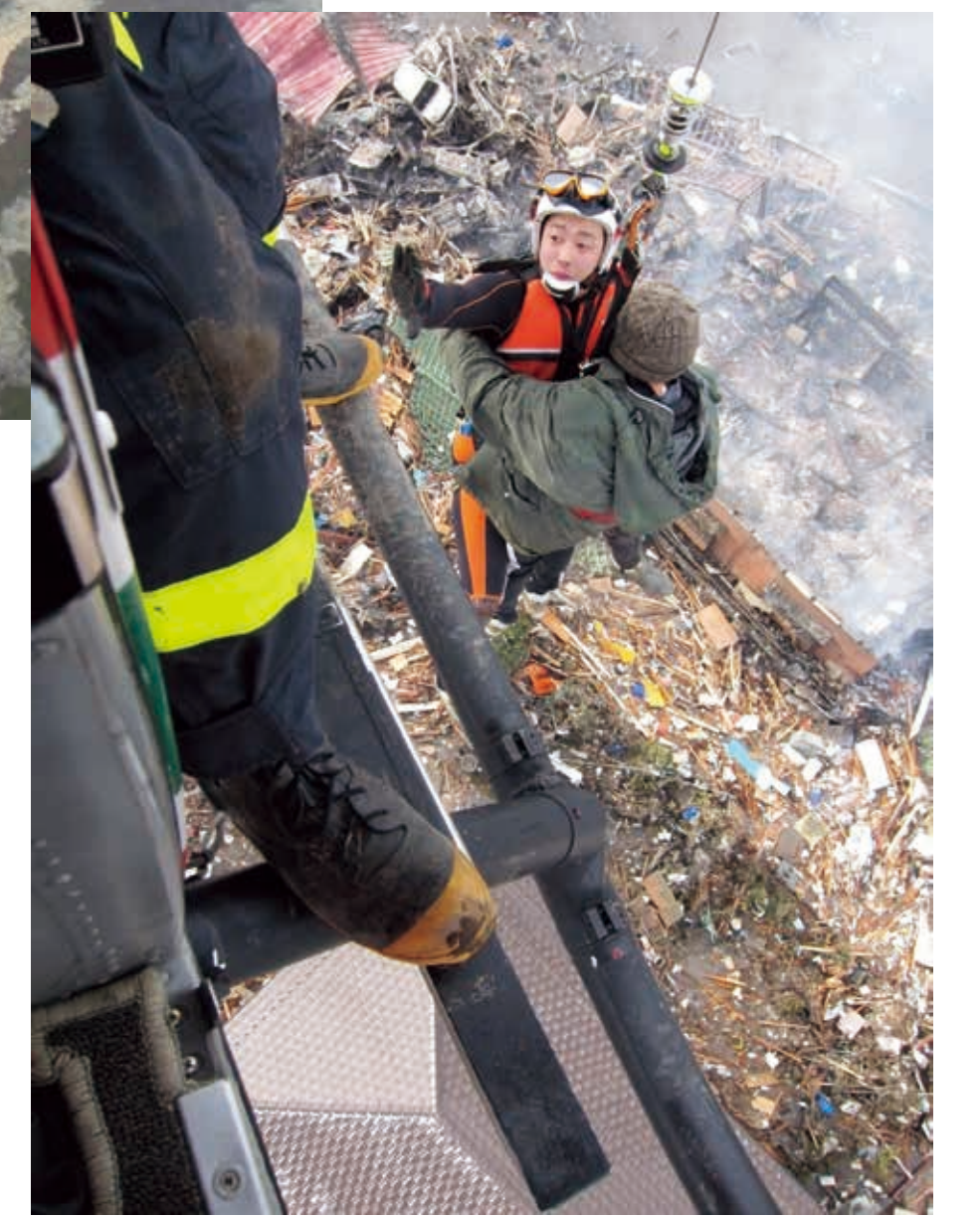
	In Sendai City
Dead	904
Missing	30
Injured	2,271

Structural damage (As of February 28, 2013)

	In Sendai City
Fully destroyed	30,005 units
Severely damaged	26,995 units
Half destroyed	82,481 units
Partially destroyed	115,986 units



People taking refuge at Arahama Elementary School



Rescue operation immediately after the earthquake

Outline of the cost of damage (As of January 29, 2013)

Approx. 1.3 trillion yen (Approx. 16.7 billion dollars; one dollar = 77.6 yen)

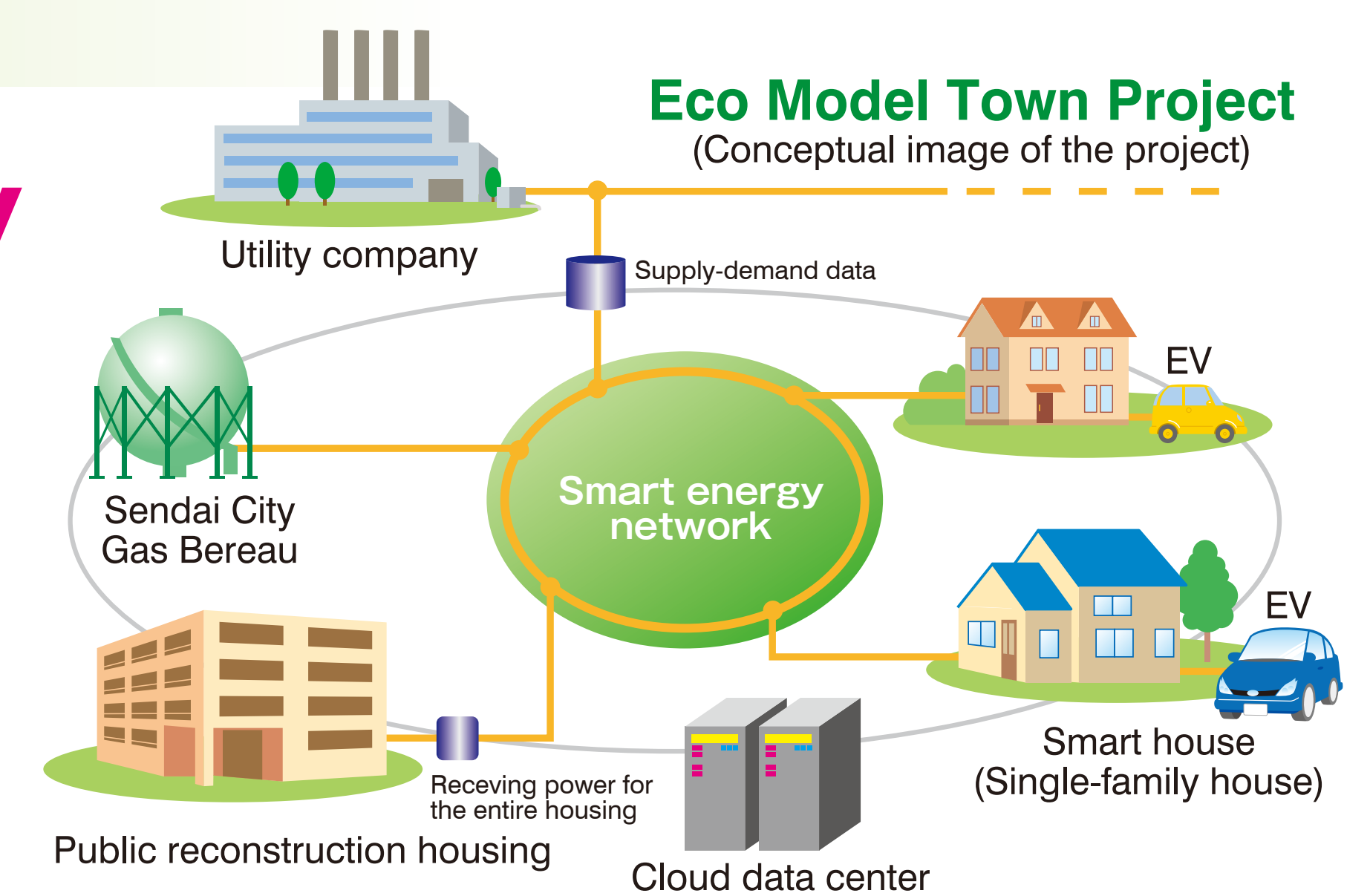
Building a disaster-resistant city based on the lessons learned from the Great East Japan Earthquake

Three initiatives toward becoming a disaster-resistant city

Development of a disaster-resistant city

(development of equipment & facilities and systems)

1. Recognizing the disaster risk in communities and the importance of investment in disaster reduction
2. Building a disaster-resistant urban infrastructure (utility “lifelines,” public buildings, etc.)
3. Taking comprehensive countermeasures against tsunami based on multiple defenses (facilities, zoning, etc.)
4. Improving response capabilities for disasters (review of evacuation centers, countermeasures for persons unable to return home, provision of information, BCP formulation, etc.)
5. Establishing systems for wide-ranging cooperation, mutual support, etc.



Development of self-reliant communities based on mutual support

1. Promoting support activities in local communities (Countermeasures for those who need support, promotion of participation by women and children in disaster reduction activities)
2. Developing local human resources responsible for reconstruction and disaster reduction (Collaboration with local communities, schools, public entities, companies, etc. even in times of non-disaster)



Community-wide disaster drill

Development of strong disaster-prevention awareness in citizens

1. Holding disaster reduction seminars for citizens
2. Developing local leaders for disaster reduction and supporting their activities
3. Improving new disaster reduction education



Disaster reduction workshop held by women



Disaster-reduction & environmental education

Role Model City for World Disaster Reduction Campaign

Recognized as a Role Model in the 2010-2015 World Disaster Reduction Campaign “Making Cities Resilient: My City is Getting Ready” through its commitment to “Promoting Community-Based Disaster Risk Reduction and Empowering the People to Act on DRR”



Ms. Margareta Wahlström, UN Special Representative of the Secretary-General, presents a certificate to Sendai City. (October 9, 2012)