

# *Risk Assessments: First we need to ask the right questions*

*Dr Alanna Simpson, Sr. Risk Assessment Specialist  
Global Facility for Disaster Reduction and Recovery*

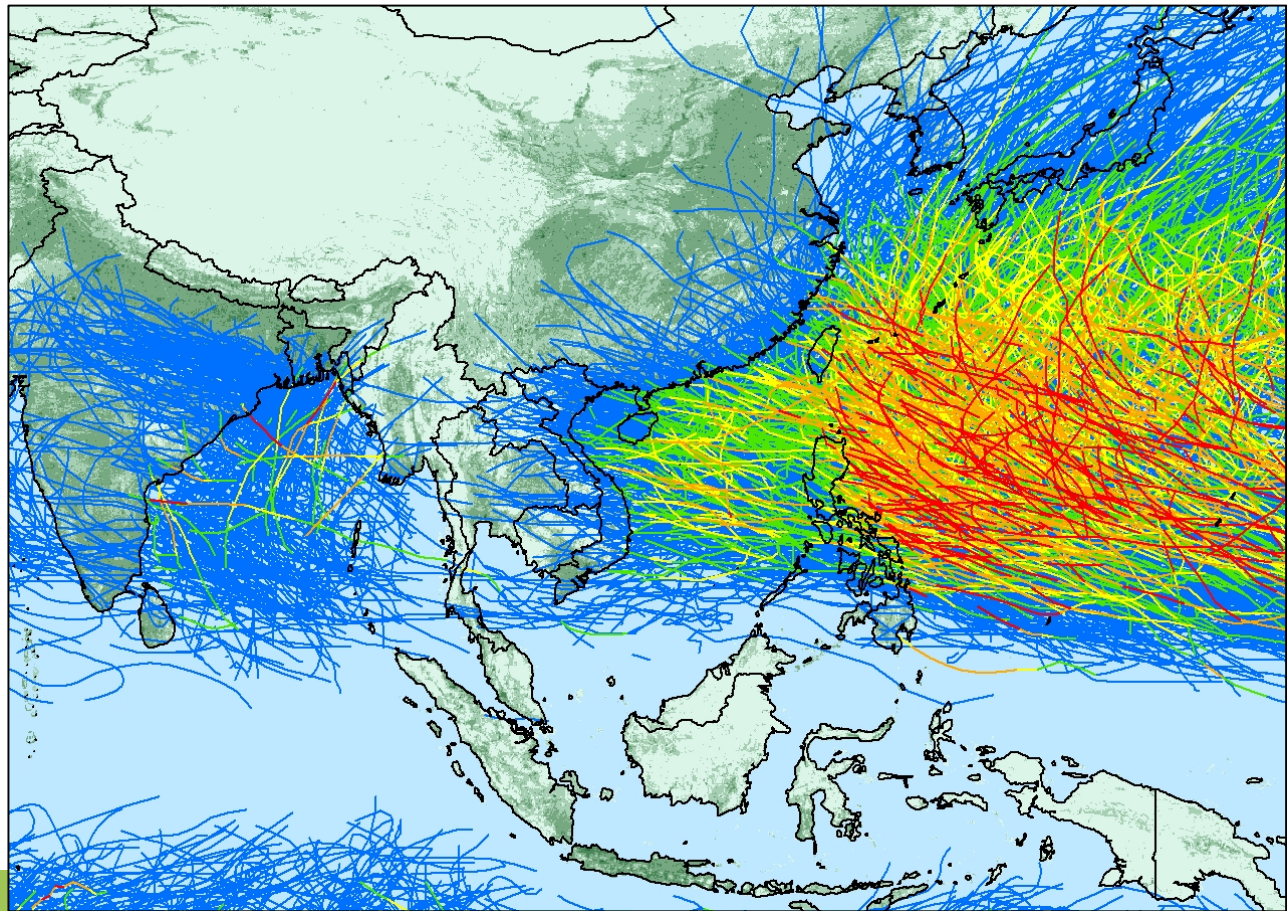


**GFDRR**  
Global Facility for Disaster Reduction and Recovery

# *Matching Risk Information to Risk Questions*

- Which countries have the highest risk from cyclone?

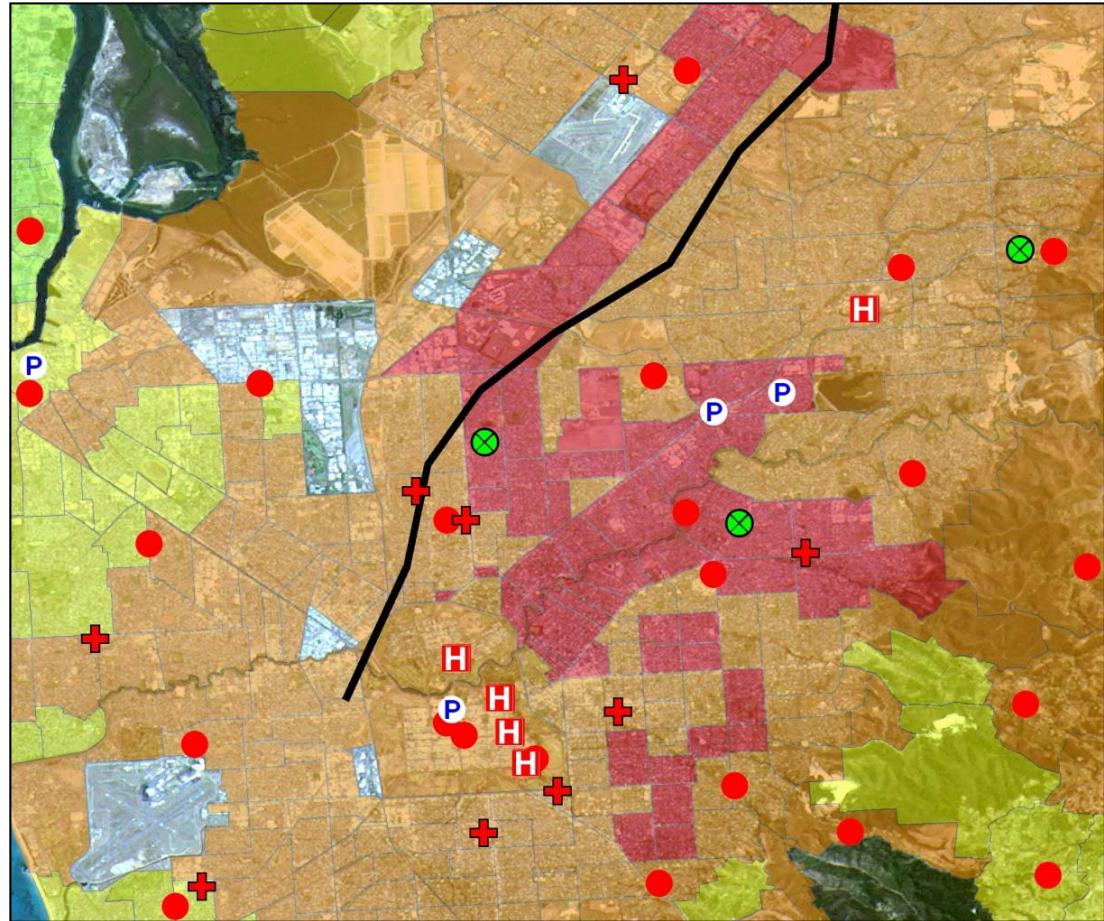
**Global scale  
risk data and  
information**



# Matching Risk Information to Risk Questions

- Which are the most vulnerable health and police assets?

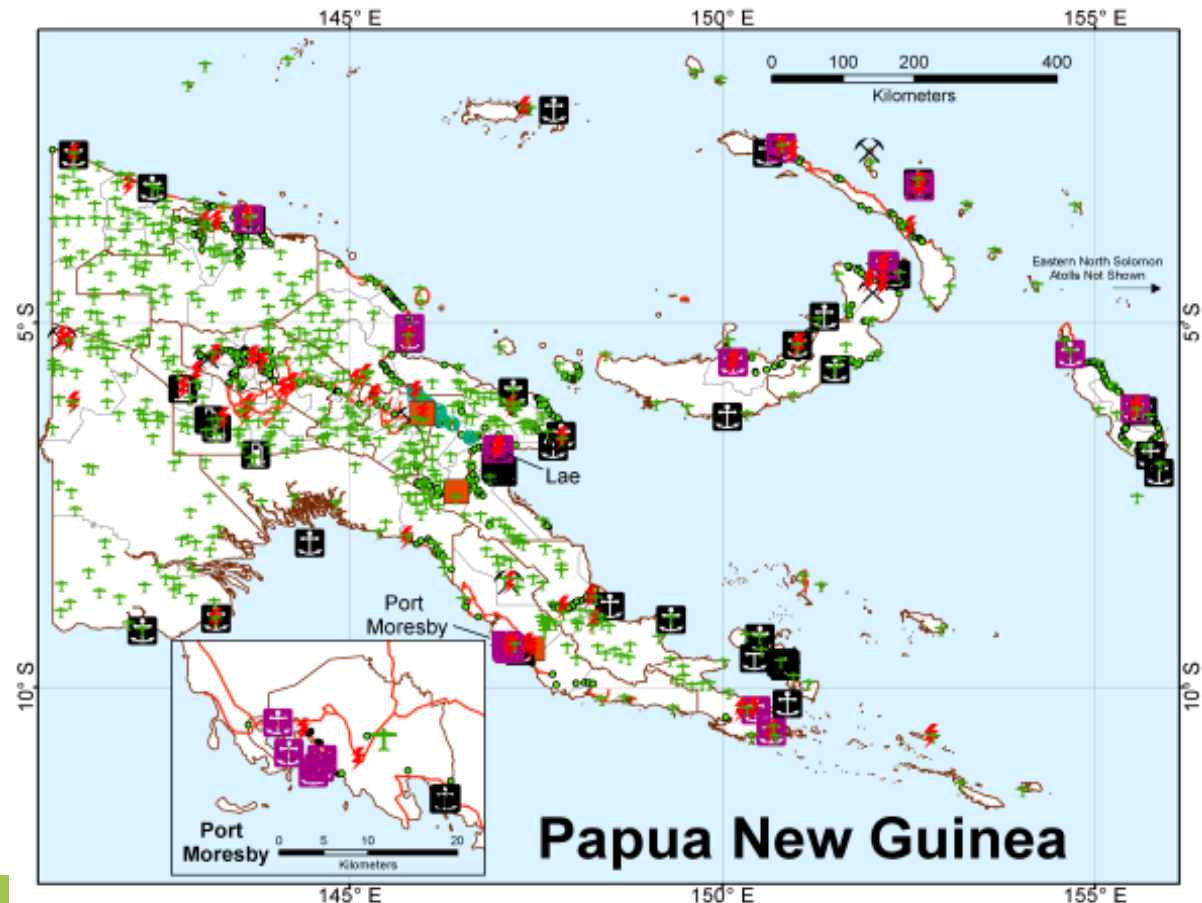
Local and site specific data merged with national data and supplemented by global data



# Matching Risk Information to Risk Questions

- How do we manage disaster risks in our health, education, water/sanitation, transportation sectors?

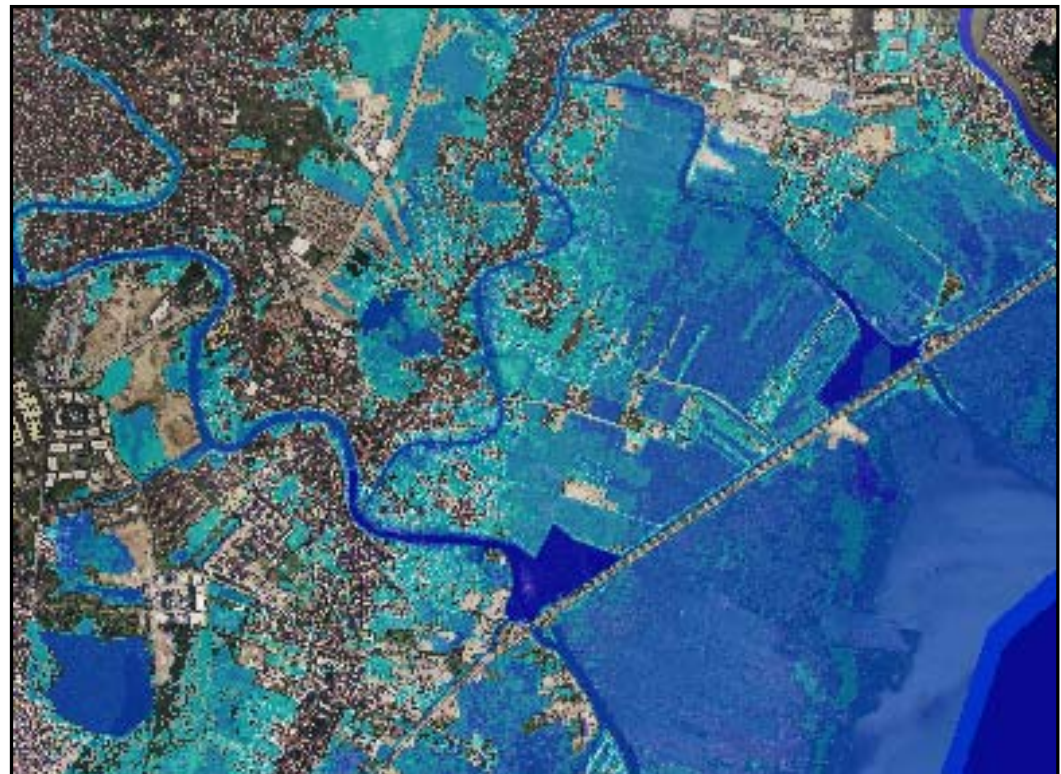
**Highly specific sector data merged with local and national data**



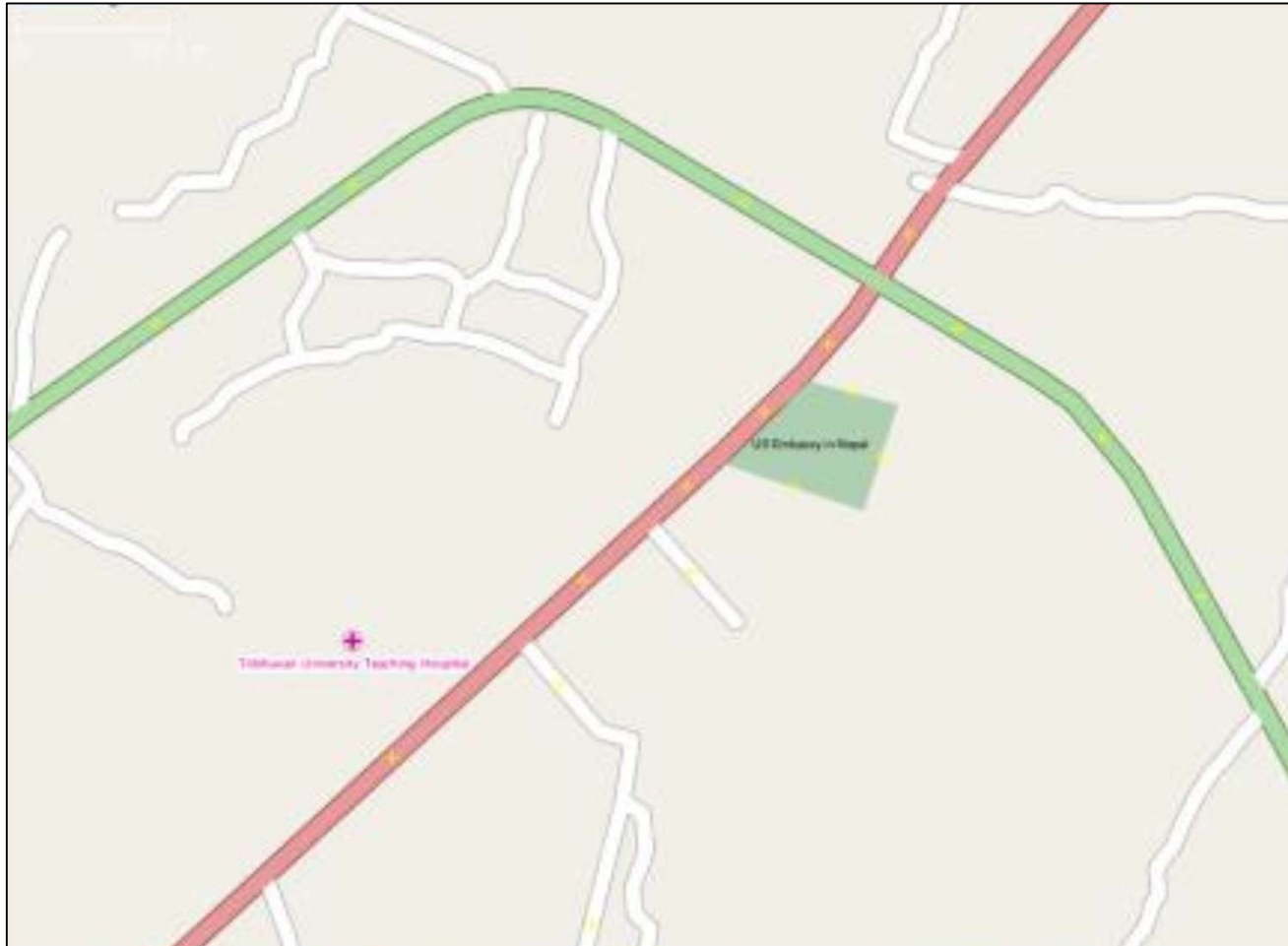
# *Matching Risk Information to Risk Questions*

- Where are the most vulnerable areas of my city/community so we can consider this in our local urban plan?

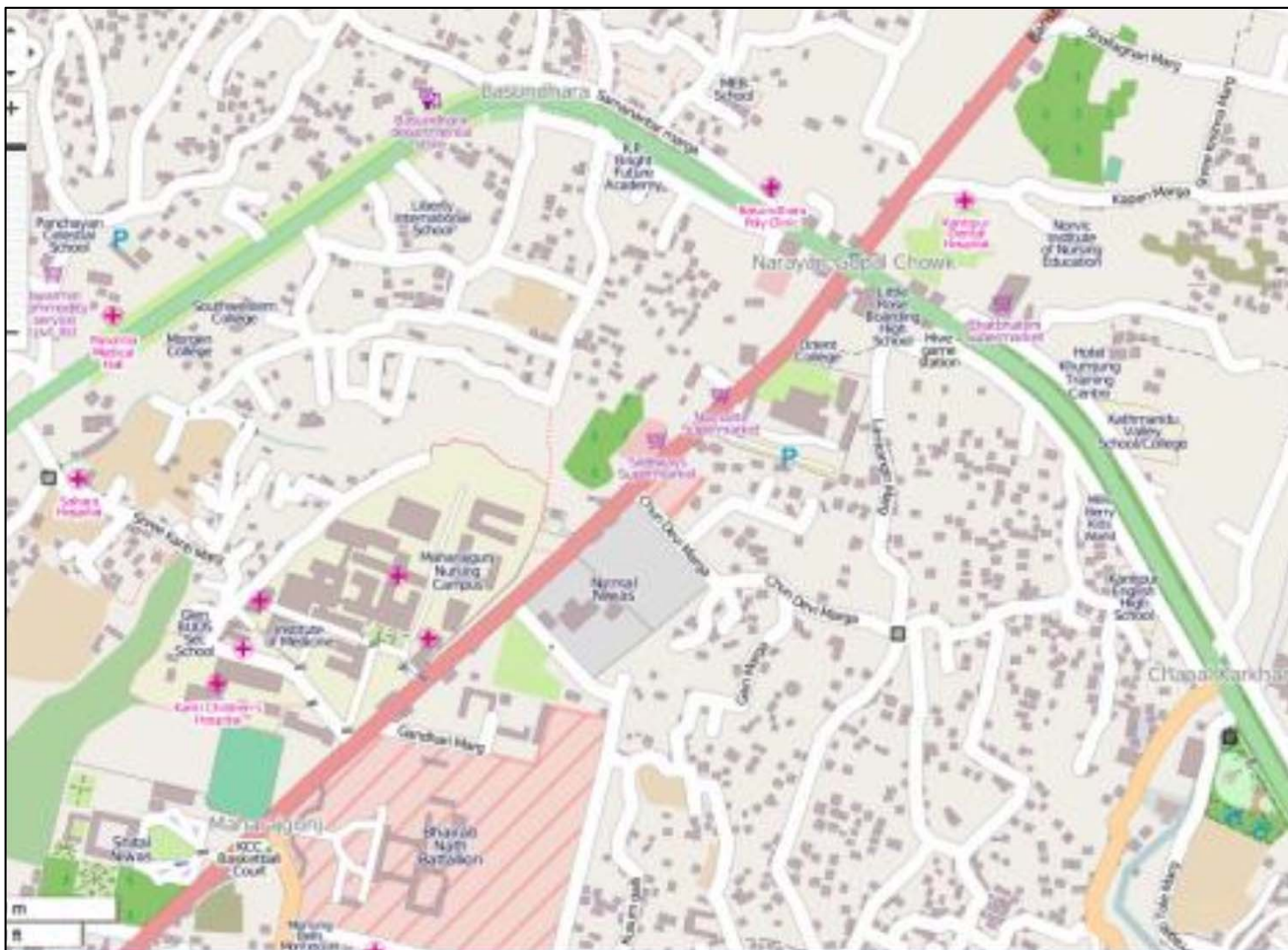
**Local data  
supplemented  
by national  
data**



# *So how do we meet the need for local, national and sector datasets?*



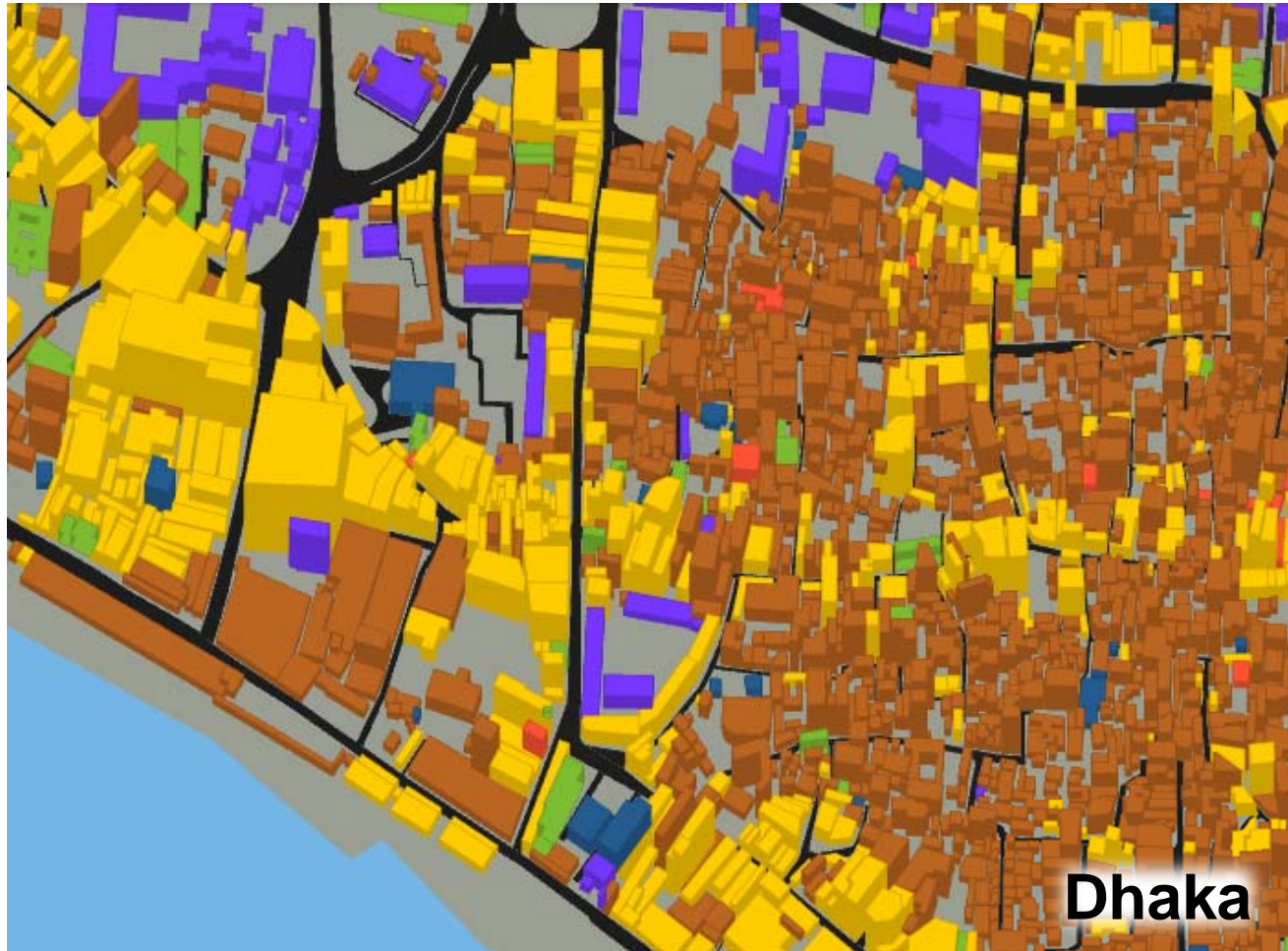
# *So how do we meet the need for local, national and sector datasets?*



## *Non-traditional partnerships*



***So how do we meet the need for local, national and sector datasets?***



***Liberating existing datasets***



**GFDRR**  
Global Facility for Disaster Reduction and Recovery

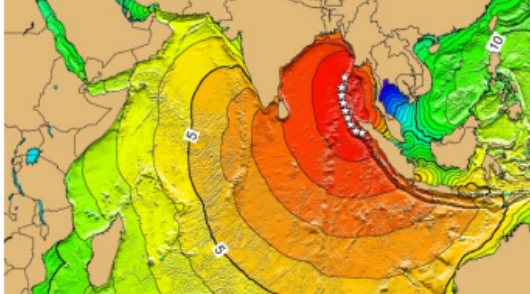


# So how do we meet the need for local, national and sector datasets?

**RISKINFO** Disaster Risk Information Platform  
*Risk Information for all...*

Sign in for extra features

### Welcome



Welcome to the Sri Lanka Disaster Risk Information Platform (RiskInfo). The purpose of RiskInfo is to make disaster risk information available to all the stakeholders and the public in order to facilitate disaster risk reduction and recovery efforts. The initiative is led by the Disaster Management Center (DMC) in partnership with UNDP, NGOs and GDFRR Labs. The data sharing platform is built using the open source software GeoNode that is designed to enable collaborative use of geospatial data and maps. To get in touch and get in account to upload data: riskinfo@dmc.gov.lk

### MAPS

RiskInfo lets you compose and share maps. **Create** a map with our cartography tool, or **explore** maps shared by others.

Hazard profile maps      Administrative boundaries

Explore maps      Create a new map

### DATA

RiskInfo lets you upload, manage, and browse data. **Search** for data that is valuable to you, or **upload** your own data.

Hazard data      Exposure data

Base data      View all data

**Sharing data with all stakeholders**



**GDFRR**  
Global Facility for Disaster Reduction and Recovery

# *Many risk assessments...the challenge is to ensure we can answer the questions of decision makers*



Brett Ryder



**GFDRR**  
Global Facility for Disaster Reduction and Recovery