



国家行政学院
CHINESE ACADEMY OF GOVERNANCE

China's Government Efforts to Strengthen Disaster Risk Management

YOU Zhibin
Associate Professor
National Institution of Emergency
Management(NIEM,CAG)

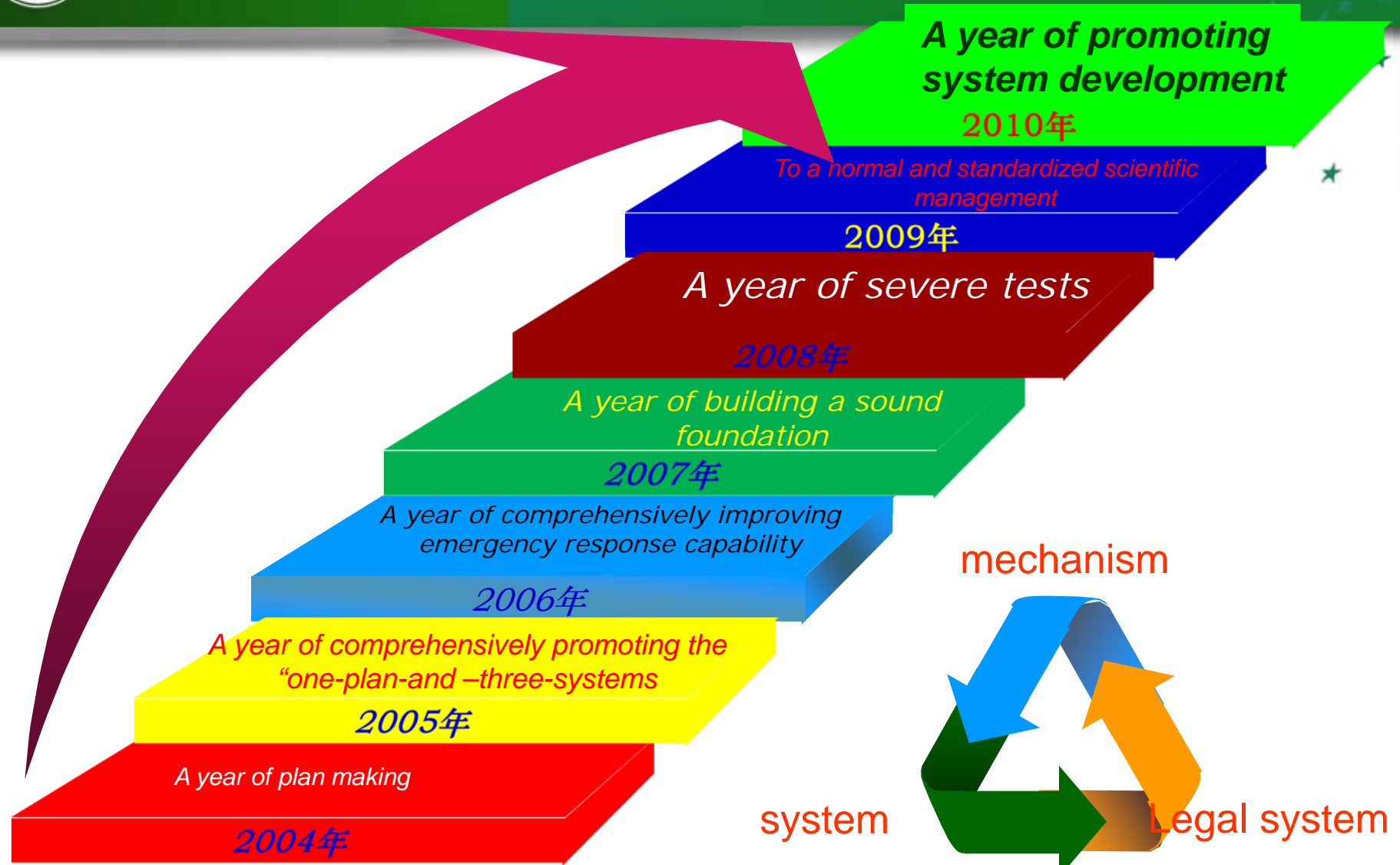


1. The Disaster Risk Management Institutionalized

- **Laws and Regulations**
- **Institution-building (EMO System)**
- **Emergency Mechanisms**



It can be said that the outbreak of SARS in China is “a roll booster and turning point for the crisis management of the governments at various levels” in 2003.



Emergency management has been improved.



Classification of Emergencies (Emergency Response Law, 2007)



I Natural disaster



I Accidental calamity(technic failure)



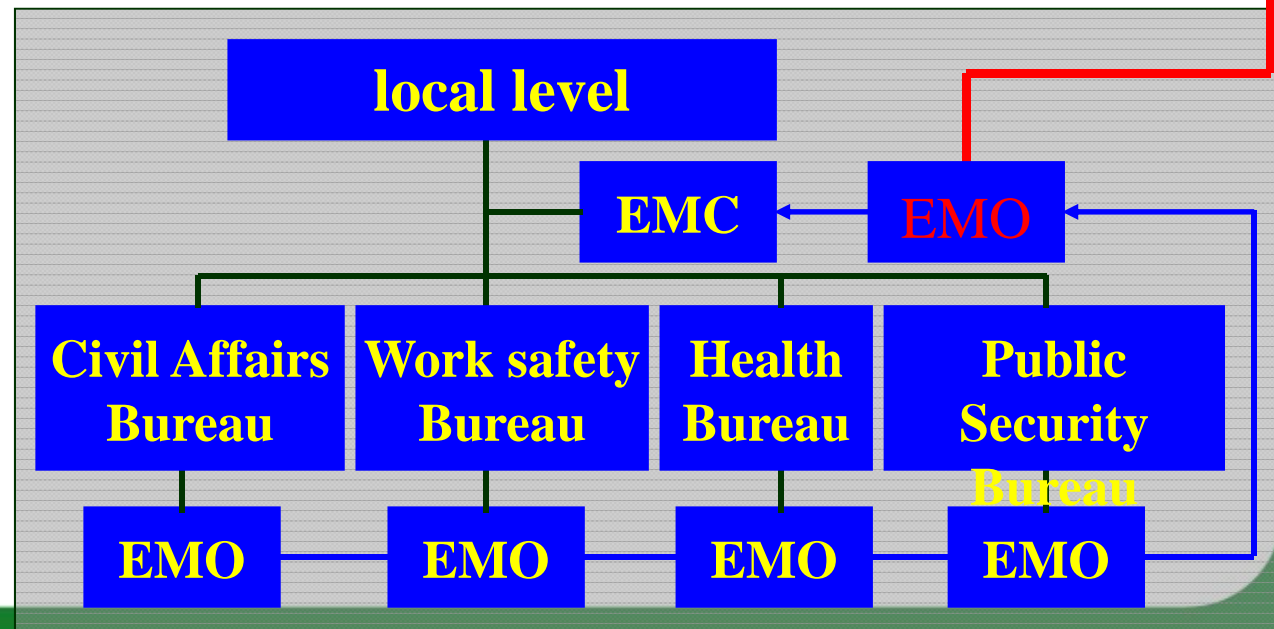
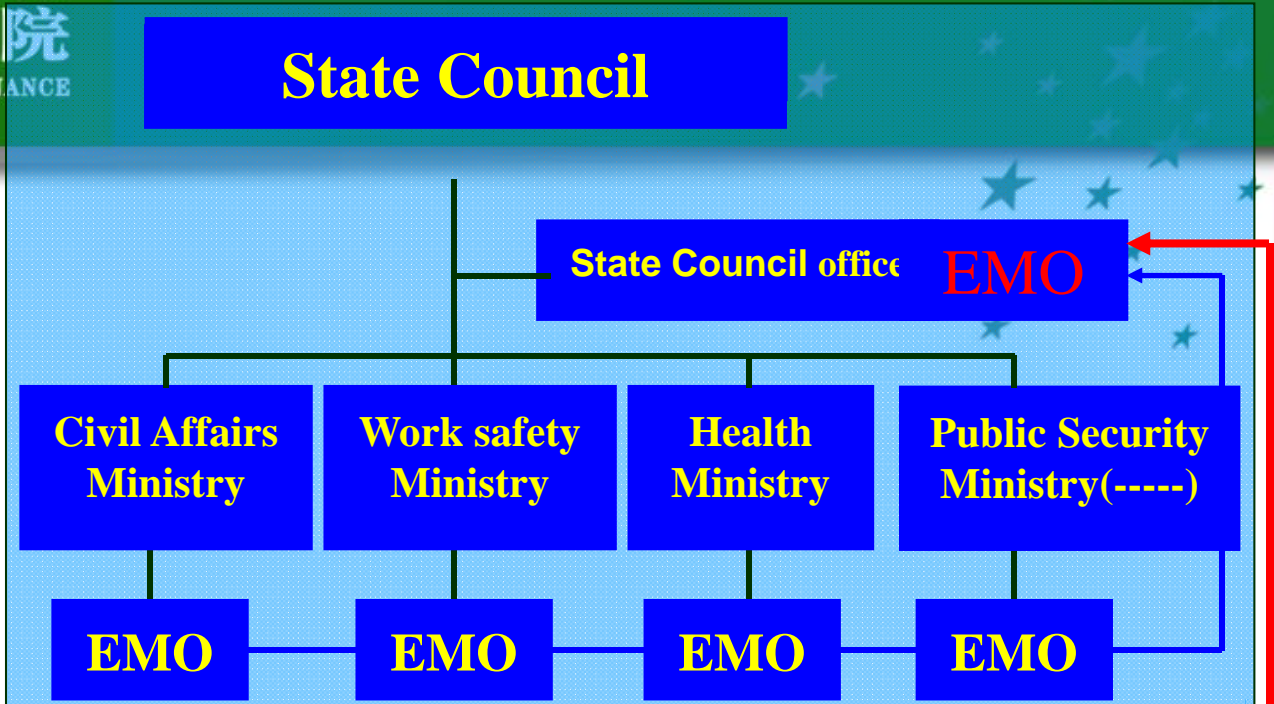
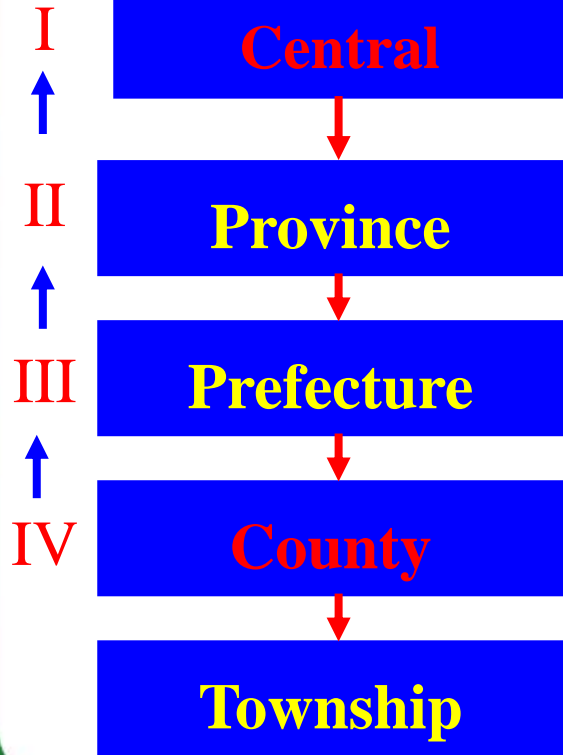
I Public hygiene accident



I Social security accident



uniform leadership
comprehensive coordination
categorized management
graded responsibility
territorial management





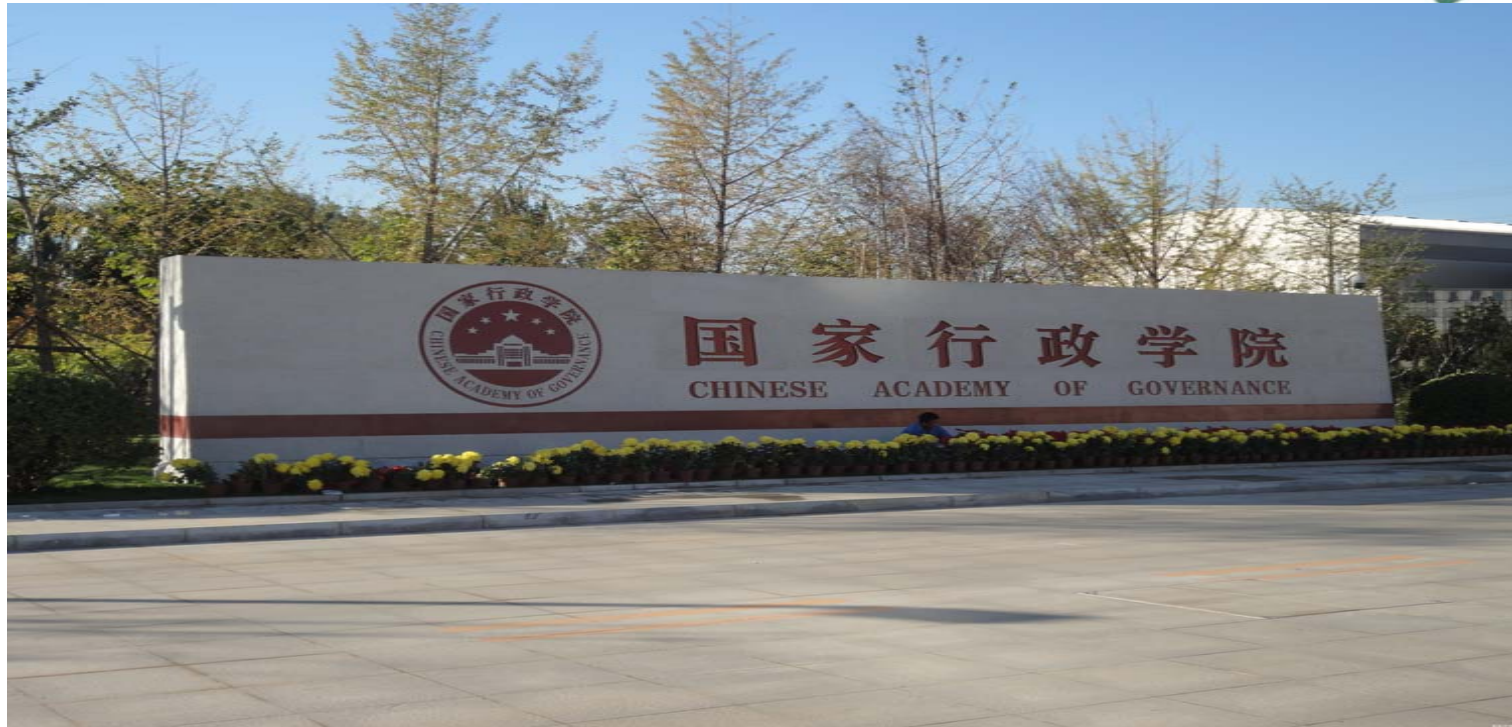
2.NIEM efforts in disaster risk management

- **CAG and NIEM (high and mid-level civil servants training, research and consultancy, foreign exchanges and cooperation)**
- **Sino-German Disaster Risk Management Project (Sichuan first responder, Tianjin Firefighters, Chongqing, Guangdong)**



国家行政学院
CHINESE ACADEMY OF GOVERNANCE

2.1 CAG and NIEM

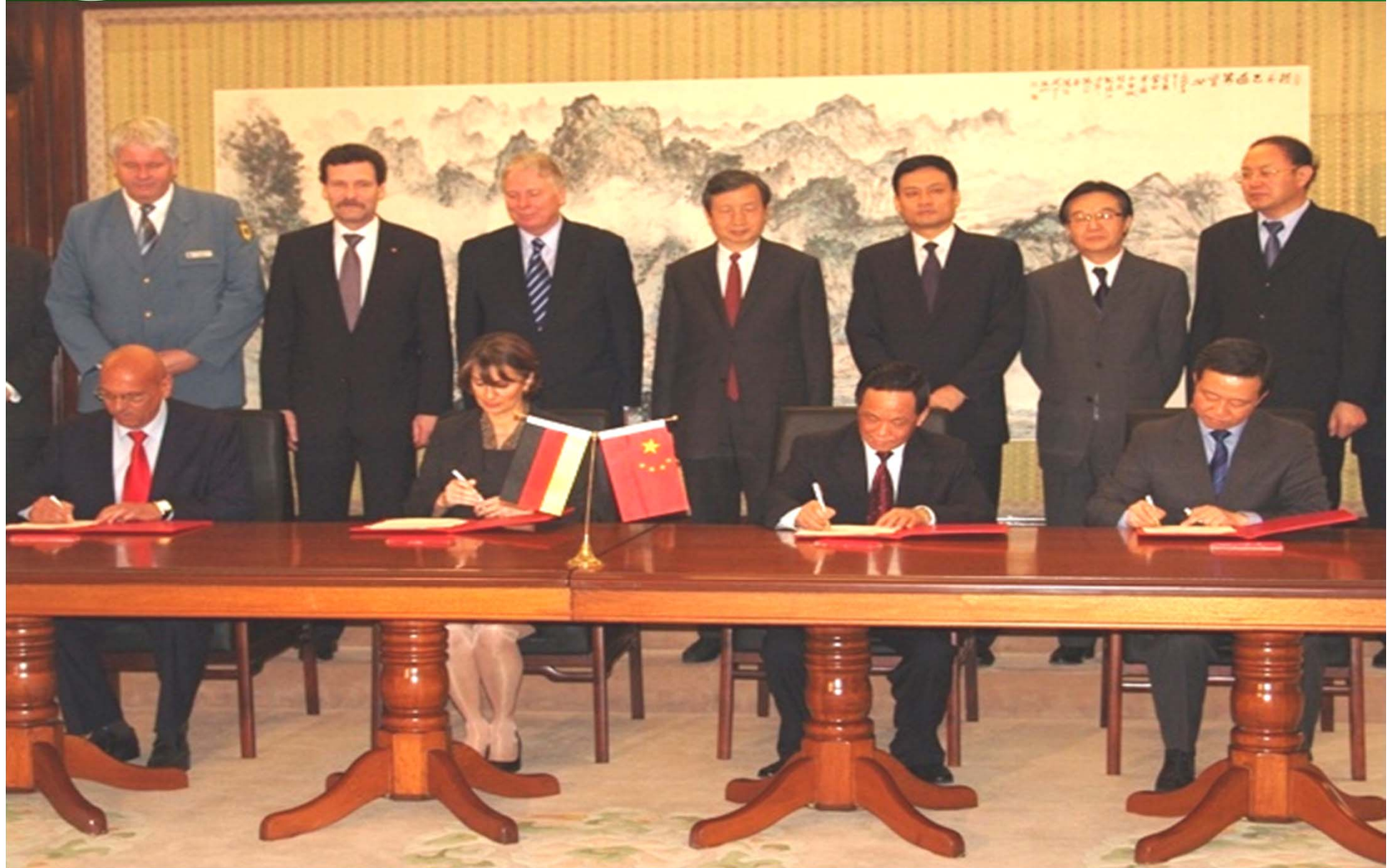


(high and mid-level civil servants training, research and consultancy, foreign exchanges and cooperation)





国家行政学院
CHINESE ACADEMY OF GOVERNANCE





★ 国家行政学院应急管理培训中心
National Institute of Emergency
Management, CAG

GIZ中德灾害风险管理项目
Sino-German Disaster Risk
Management Project, GIZ

● 骨干师资培训
ToT Training

● 风险分析及预案优化试点
Pilot Provinces for Risk Assessment
and Contingency Planning

● “第一响应者”及“第一响应”培训
First Responder & First Response
Training

□ 讲学以及“跟踪研讨会”
Seminars and Follow Up Forums

● 赴德培训及考察团学员
Participants of Study Tours and
Training to Germany





中德灾害风险管理合作项目九龙坡区示范



附件1 场景描述模板

公共安全风险评估	基本场景 [危岩]
----------	-----------

1 危险的定义 (突发事件类型及描述)
 洪水是指一个流域内因集中大暴雨或长时间降雨, 汇入河道的径流量超过其泄洪能力而漫溢两岸或造成堤坝决口导致泛滥的灾害。

2 事件描述

2.1 基本概况——灾害点基本情况、风险事件基本情况

枢纽工程位于九龙坡区白市驿镇真武村, 为小(二)型水库, 坝型为粘土均质土坝, 坝顶高程340.26米, 最大坝高14米, 坝址以上集雨面积1.43平方公里, 多年平均径

©2008 power by youqin.com

场景描述



Risk Assessment and Contingency Planning in China
 Christof Johnen, Li Xin, and Zhang Liwen
 (GIZ, China)

China is exposed to many natural and industrial hazards and threats to public health. Having vast experience in disaster response, China is attributing more and more importance to disaster mitigation and preparedness measures.⁴ Complementing the ongoing efforts of the Chinese government, the GIZ, commissioned by the German government, cooperates with the National Institute of Emergency Management at the Chinese Academy of Governance (CAG/NIEM) and the Emergency Management Offices (EMOs) at provincial and municipal levels in China. The main objective is a more coherent DRM system with an integrated, cross-sectoral approach. Taking into account existing laws and regulations, a risk assessment framework is developed that provides the basis for disaster prevention and mitigation measures as well as for optimizing contingency plans.

The Approach

A risk assessment is the core element of DRM. It enables the relevant authorities to evaluate risks that derive from potential hazards and the population's vulnerability. On the basis of assessment results, disaster-sensitive planning that helps mitigate the detrimental effects of hazards is possible.

A pragmatic methodology for risk assessment developed in Germany provided the starting point⁵. Based on international standards for DRM—ISO 31000, *Risk management: Principles and guidelines*—the developed methodology is a result of joint efforts and combined national and international expertise. The main objective was to create a workable and practical tool.

The impact of a hazard on the economy, critical infrastructure, environment, and society



Photo 9.3 Risk assessment seminar in Chongqing: exemplary application of the risk assessment methodology. Photo courtesy of DRM Project

as a whole also needs to be included in the assessment. However, the damage and losses a population suffers greatly depend on the type of hazard; therefore, various scenarios need to be carefully analyzed. These different scenarios can then be compared and used to identify an intolerable level of risks. The respective authorities are now put in a position to prioritize, to plan mitigation and preparedness measures, and to allocate resources accordingly. In this process, various administrative entities and sectors must participate to ensure that holistic and functioning contingency plans are being developed. Ultimately, the methodology was introduced to Chinese professionals and adopted for the Chinese context. In agreement with CAG/NIEM, Guangdong Province and Chongqing Municipality were selected as pilot areas for risk assessments and contingency planning.

As part of the cooperation, specific focus was put on capacity development. More than 400 local EMOs and government officials as well as Schools of Administration academics from selected provinces—Chongqing, Guangdong, Hebei, Jiangsu, Shaanxi, and Tianjin—participated in several seminars, workshops, discussion forums, and advisory groups (photo 9.3). Experts and officials from the pilot cities of Shenzhen and Heyuan in Guangdong Province and Julongpo District of Chongqing





3. The Future Efforts of China's Government

- **Facing the reality of the catastrophe risk**
- **Economic and social development is not balanced**
- **Disaster risk management will be integrated into the government's decision-making more effectively.**
- **To cooperate with the international community**





THANKS !

YOU Zhibin

**Address: No.6 Changchunqiao Road,Haidian District,Beijing
The People' s Republic of China,Postcode: 100089**

Email: youzhibin@nsa.gov.cn