

Explore your risk management needs

*How does this
worldwide
collaboration
work?*

*Where do you fit in?
Why be part of it?*

Where are we heading?



20,000+
 instrumentally recorded
 earthquakes given new
 magnitudes, locations and
 depths

Past events in the global catalogue before 2013 and after - the essence of what we do: bringing knowledge together.. to make data, resources and tools evermore valuable for risk management



More historical
 earthquakes than
 previously available in
 global datasets:
 by a factor of **12**
 in Indonesia,
 and a factor of
6 in the Himalaya

Collaborative risk assessment: from global to local

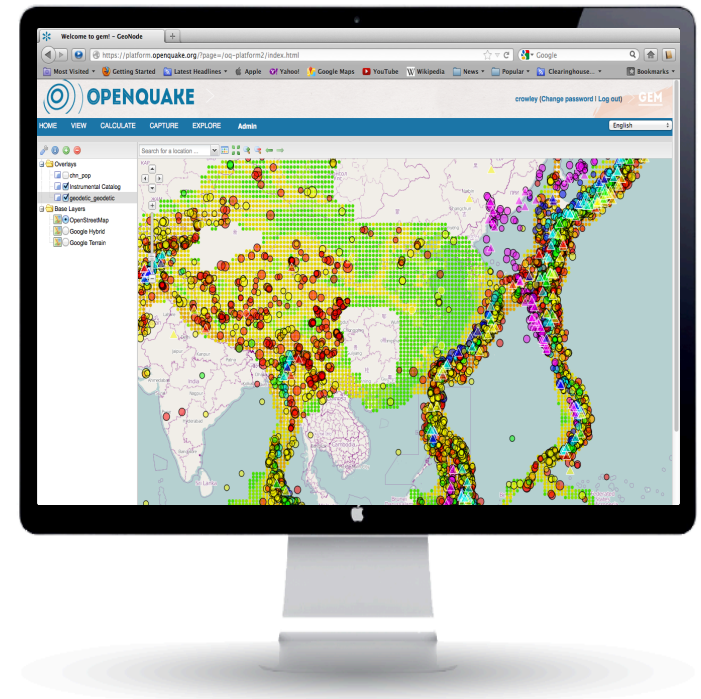
Organisations and individuals
(data, results)



Regional, national and local -
projects & collaborations
(data, methods)

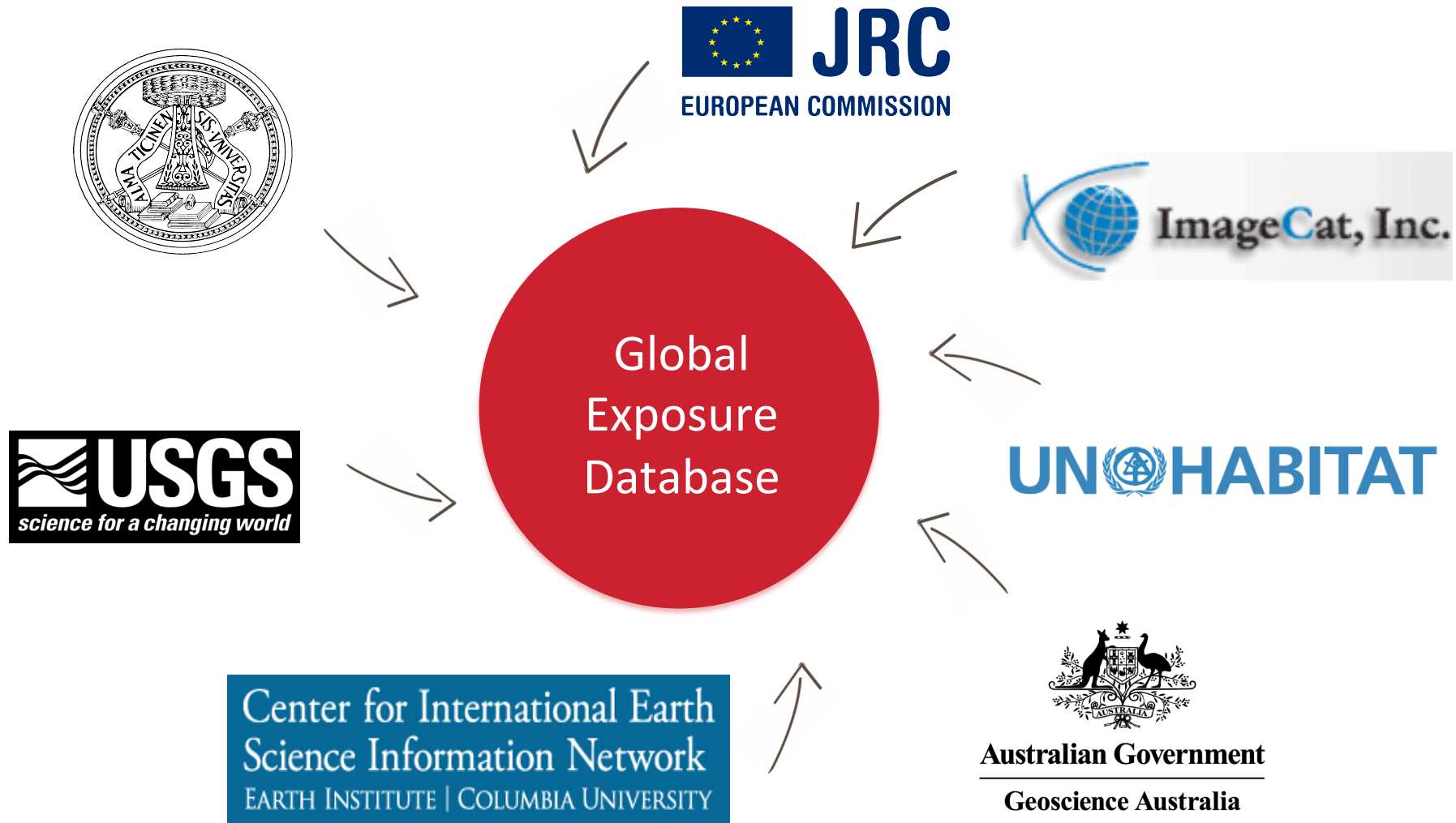


Global framework
(tools, data, methods,
expertise)



platform
tools
online resources
(V1: end 2014)

Bringing global expertise together

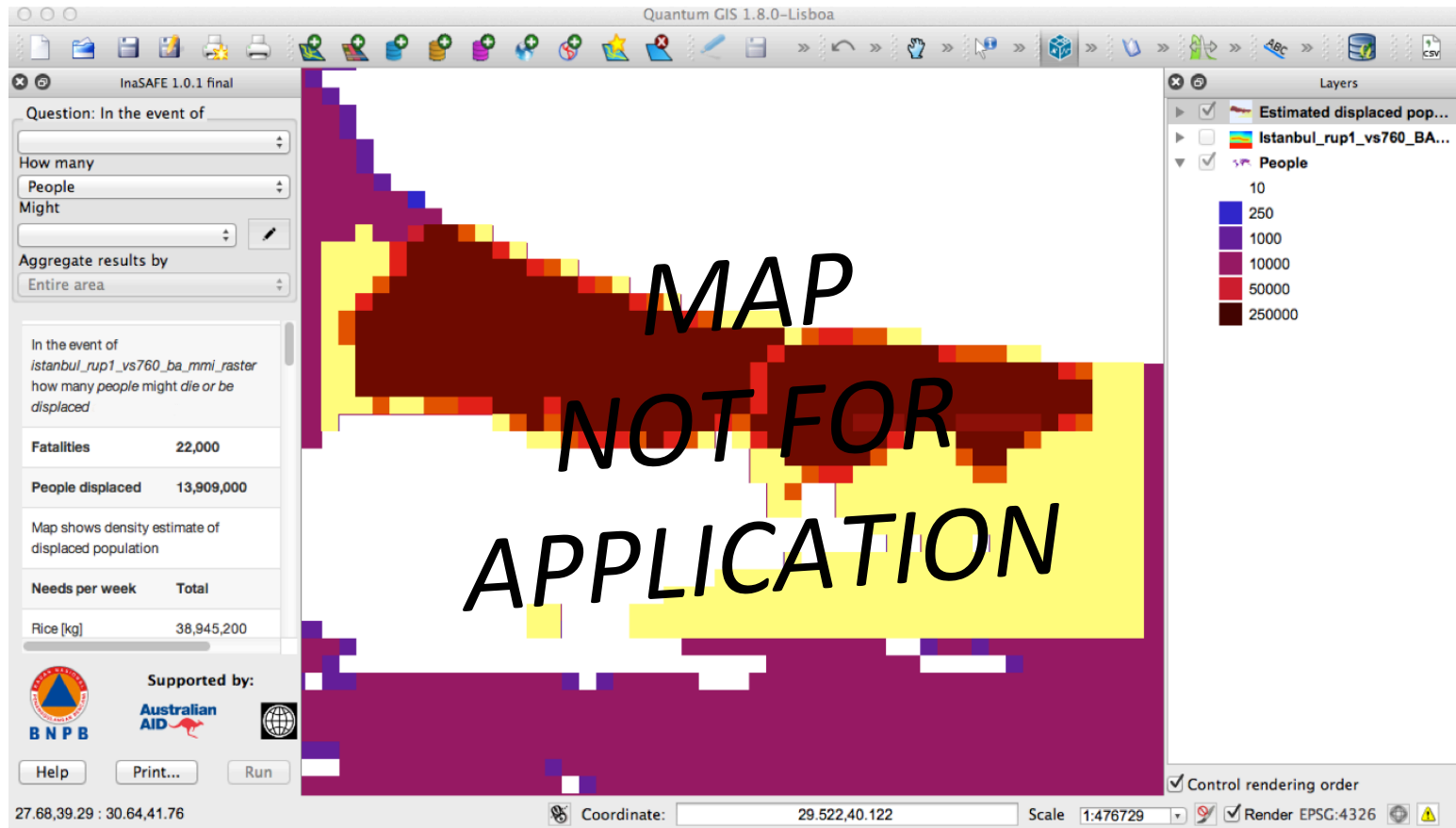


Bringing global expertise together




Photo of a Geonode Sprint with 5 organisations, organised by GFDRR Labs
GEM is not one organisation, we are doing this together – that is how we achieve our mission; not reinventing the wheel, but by being inclusive

Bringing global expertise together



One result that came is out that they managed to extend the InaSAFE tool so that it would be able to calculate fatalities for the whole world instead of only for Indonesia (of course in a very crude manner still).


Collaborative risk assessment: from global to local

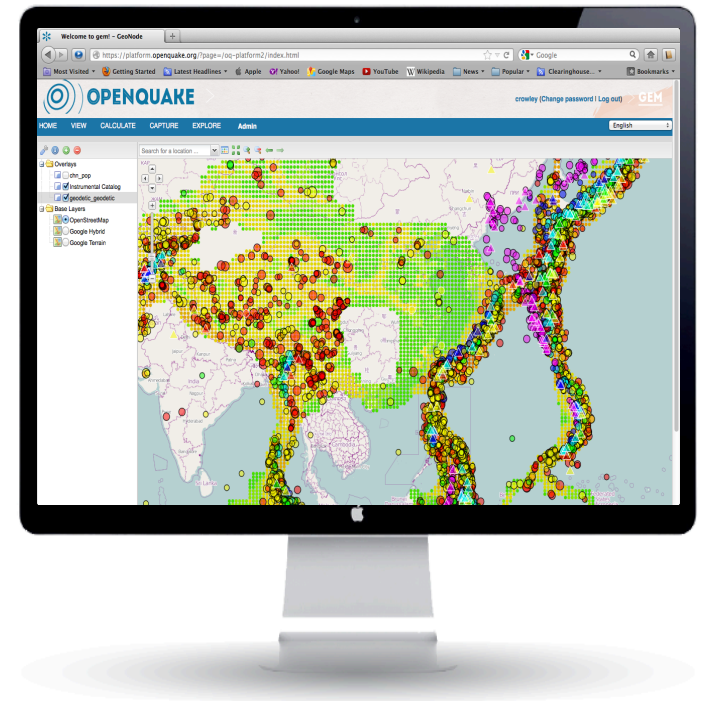
Organisations and individuals
(data, results) 



Regional, national and local -
projects & collaborations
(data, methods) 



Global framework
(tools, data, methods,
expertise) 



platform
tools
online resources

Regional, national and local projects & collaborations



We are carrying out regional activities in different ways –
Kathmandu: roundtable on resilience & barriers to risk reduction

Regional, national and local projects & collaborations



South America, a 3-year project on integrated risk for the region, carried out by local experts including also city scenario development in Lima & Quito

Regional, national and local projects & collaborations



In Sub-Saharan Africa as well as South-East Asia, Central Asia and the Balkans: bringing experts together, training / technology transfer in hazard and risk assessment and the OpenQuake tool suite

Collaborative risk assessment: from global to local

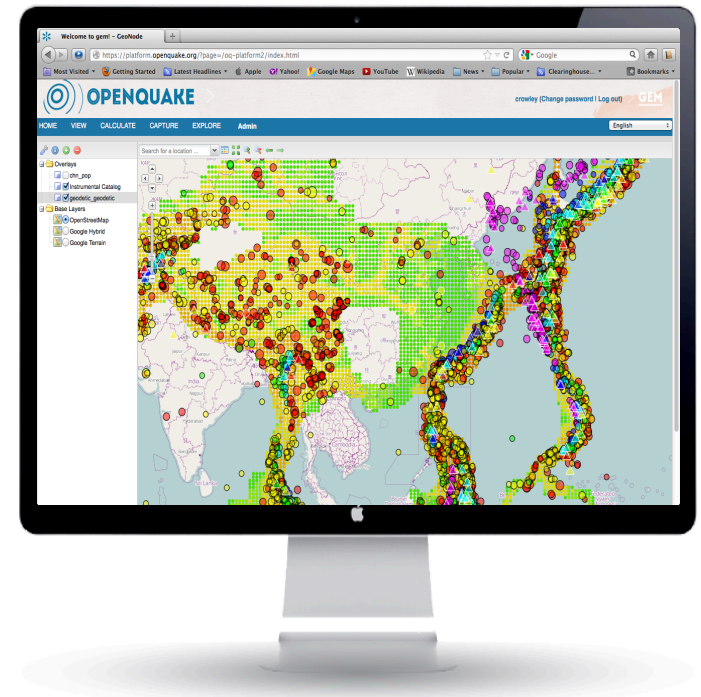
Organisations and individuals
(data, results)



Regional, national and local -
projects & collaborations
(data, methods)

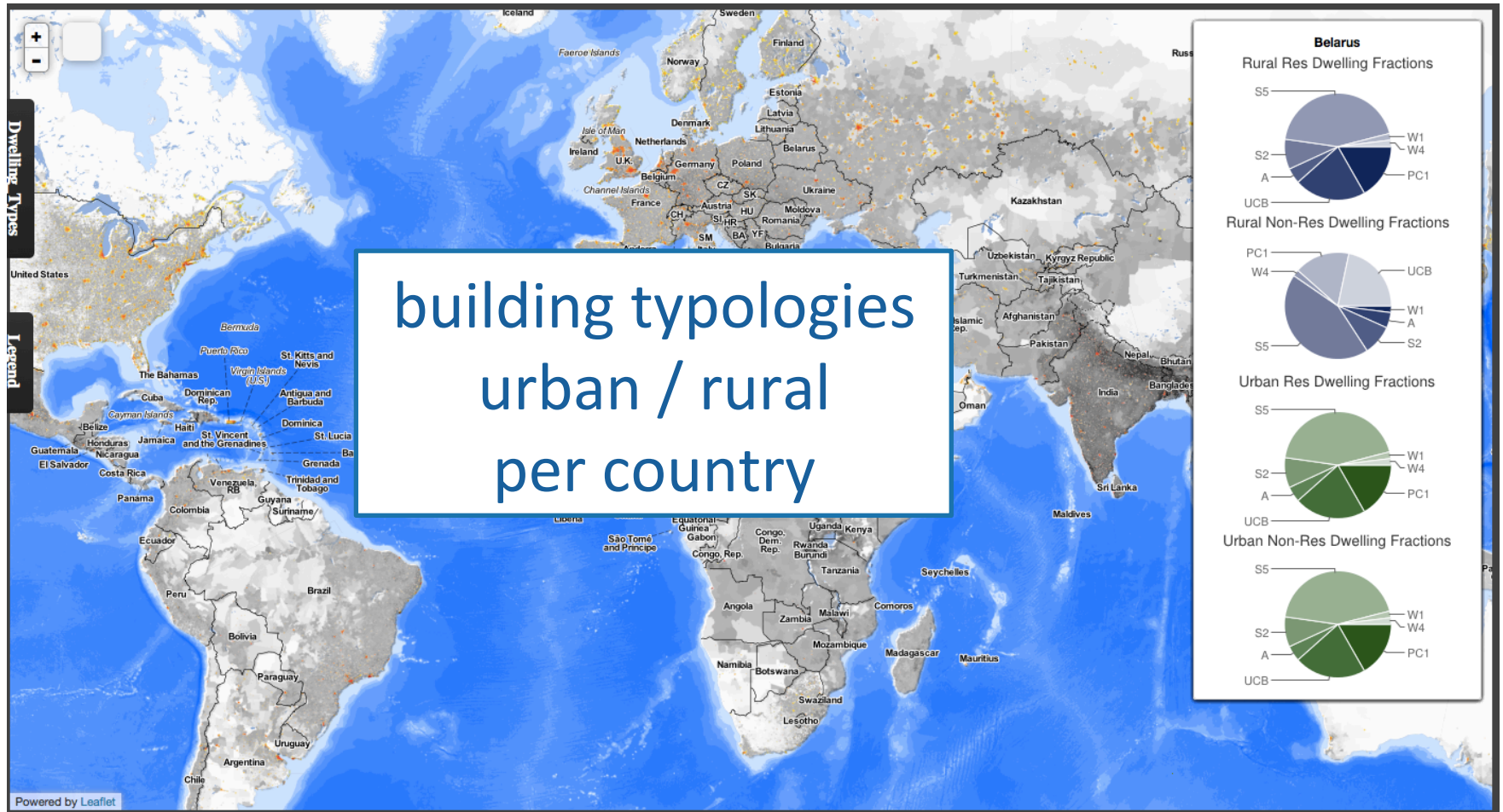


Global framework
(tools, data, methods,
expertise)



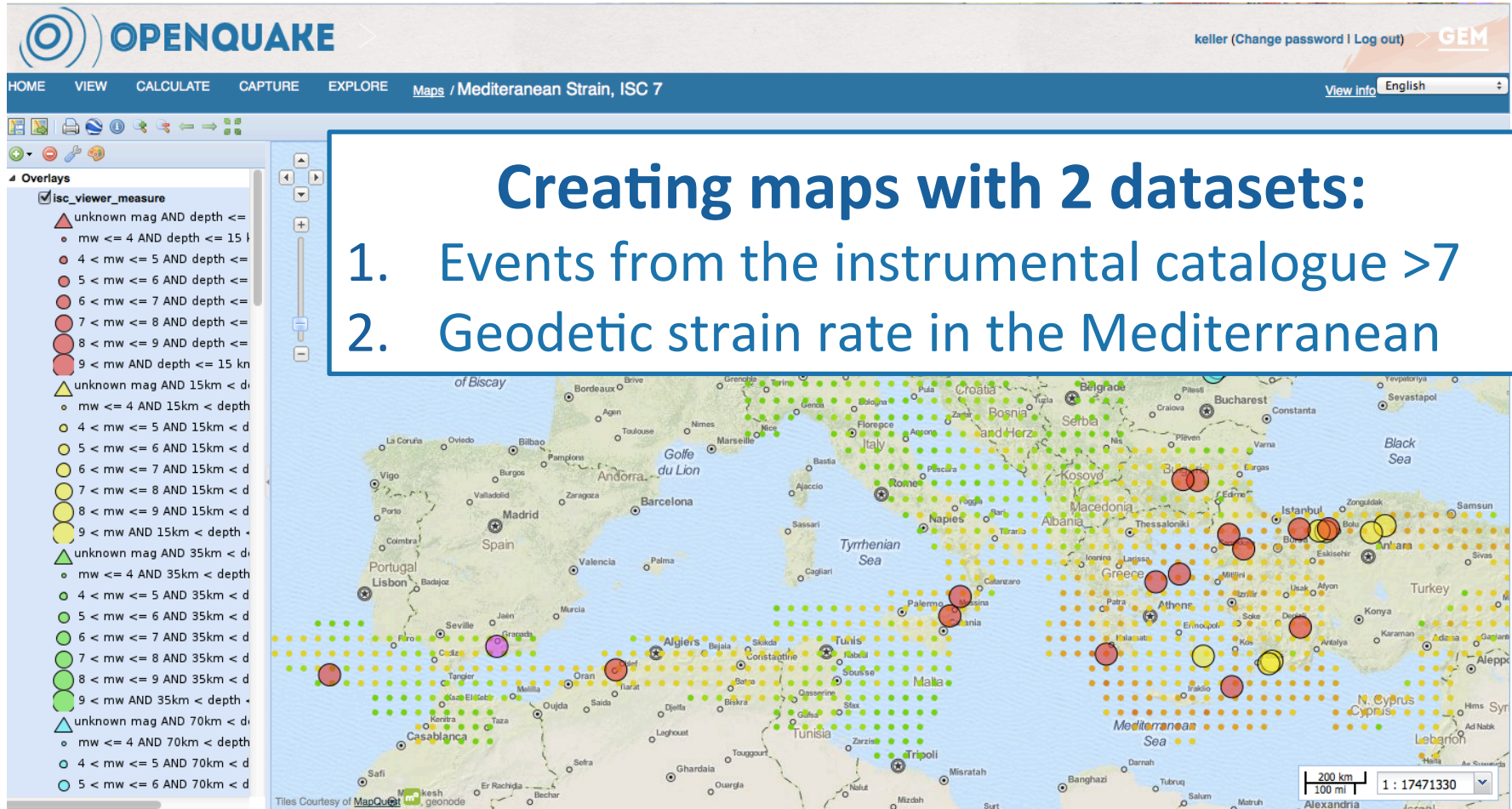
platform
tools
online resources

Platform: view, explore, capture and share



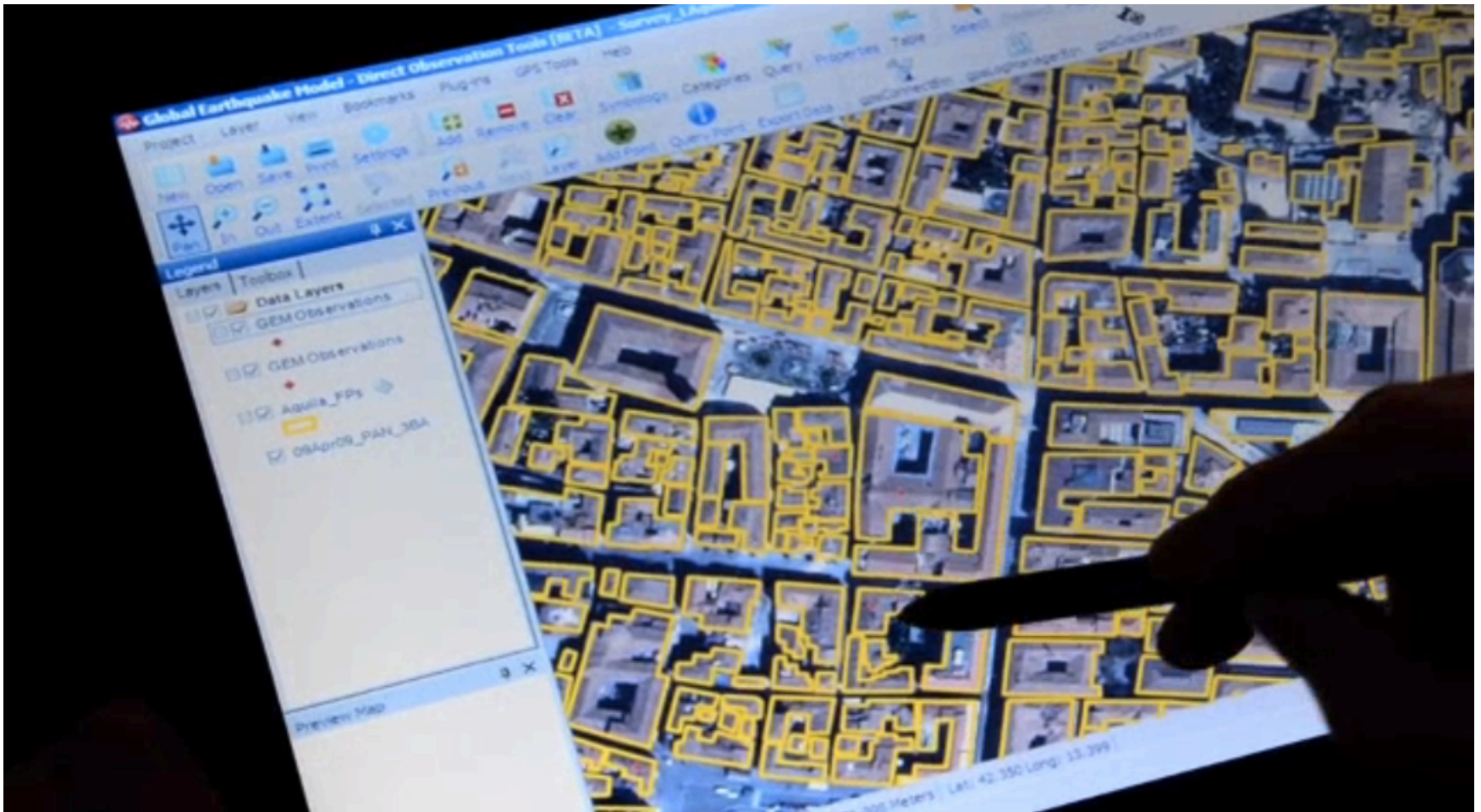
VIEW global datasets

Platform: view, explore, capture and share



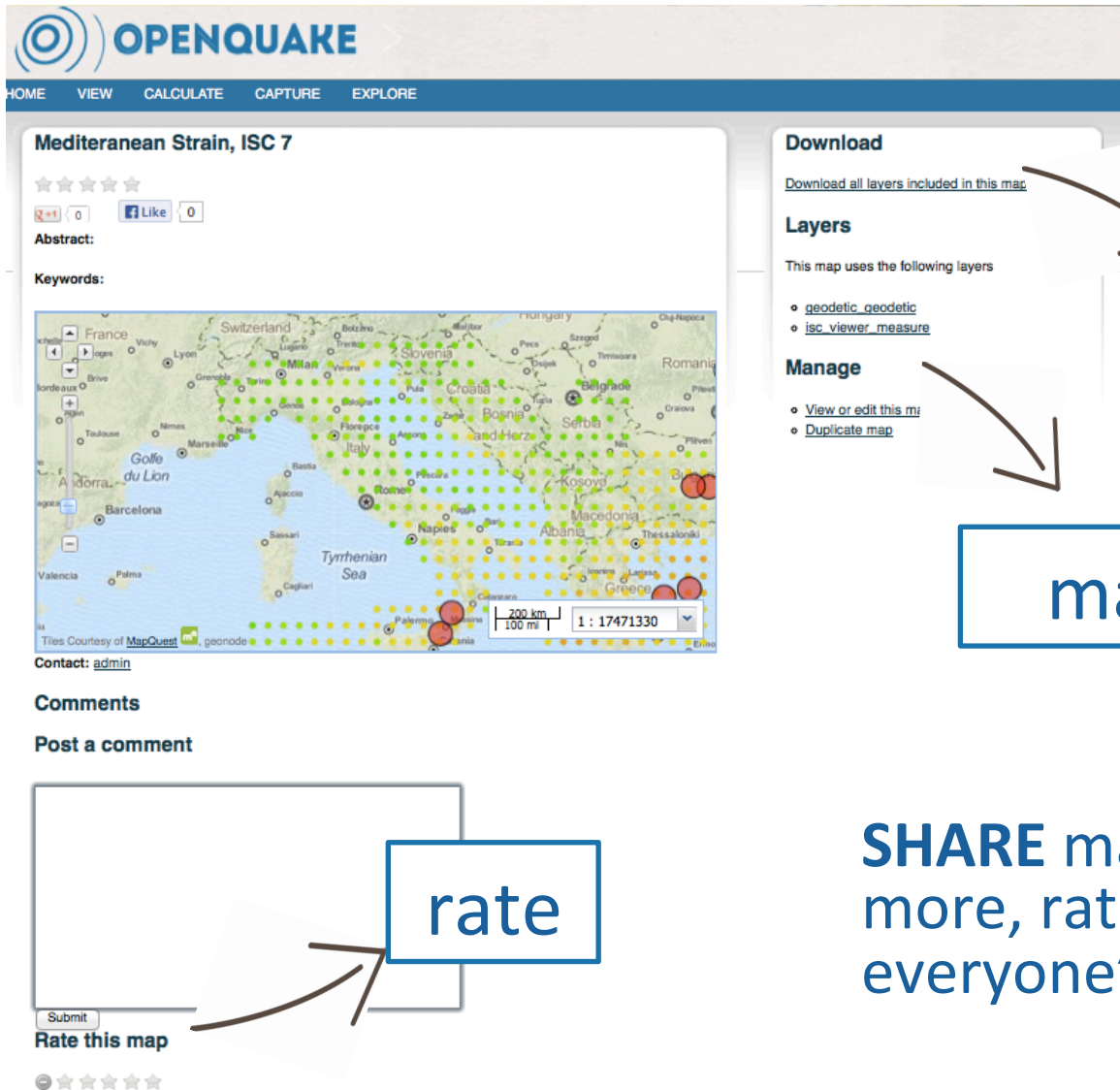
EXPLORE risk data and information

Platform: view, explore, capture and share



CAPTURE using the IDCT field observation tools

Platform: view, explore, capture and share



OPENQUAKE

HOME VIEW CALCULATE CAPTURE EXPLORE

Mediterranean Strain, ISC 7

☆☆☆☆☆

0 0 Like

Abstract:

Keywords:

Download

[Download all layers included in this map](#)

Layers

This map uses the following layers

- [geodetic_geodetic](#)
- [isc_viewer_measure](#)

Manage

- [View or edit this map](#)
- [Duplicate map](#)

Contact: admin

Comments

Post a comment

Submit

Rate this map

☆☆☆☆☆

download

manage & edit

rate

SHARE maps, results and more, rate products for everyone's use

More than 'just' a platform

▶ Online resources

Building reports

Building glossary

Technical Reports

Videos and tutorials

Photos and images

Infographs

▶ Tools and apps

OpenQuake Engine

Desktop tools for risk 'modelling'

Apps, plugins and enhancements

(code all open; non-commercial use)

Collaborative risk assessment: from global to local

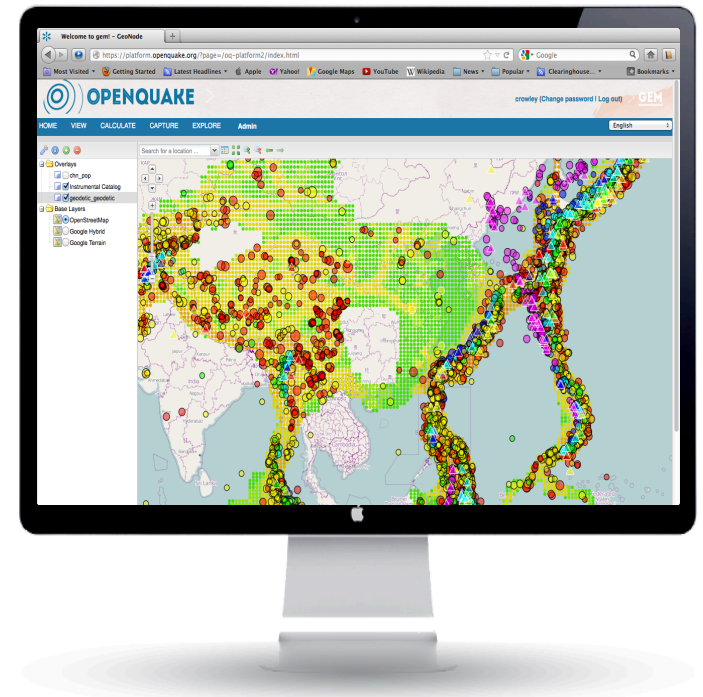
Organisations and individuals
(data, results)



Regional, national and local -
projects & collaborations
(data, methods)



Global framework
(tools, data, methods,
expertise)



platform
tools
online resources

Where do you fit in?

only together we can make it work!

- ▶ Better data and resources for decisions
- ▶ New applications
- ▶ Technical support; enhancing capacity for risk assessment
- ▶ Leverage global science and expertise

And of course... be part of a unique worldwide effort that stimulates sharing and openness and collaboration to support DRR

How can you get involved?

- ▶ Become an active participant in the effort
- ▶ Be part of a strategic partnership with global impact

PRIVATE PARTICIPANT (A)

- ✓ Voting seat on the governing board
- ✓ Private organisation working in cat-modeling and financial services
- ✓ Cost: ranging from €125.000 – 250.000 per year

PRIVATE PARTICIPANT (B)

- ✓ Private organisation working on risk assessment and management (engineering etc.)
- ✓ Cost: ranging from €30.000 – 60.000 per year

PUBLIC PARTICIPANT

- ✓ Voting seat on the governing board
- ✓ Public interest at regional, national, provincial or city level
- ✓ Cost: based on R&D expenditure €15.000 – 275.000 per year

WORLDWIDE COLLABORATOR

- ✓ Seat on regional council
- ✓ Strategic partnership involving data, risk assessment, results & apps
- ✓ Cost: defined together

How can you get involved?

*Ideas for (strategic)
collaboration...*

collaborate to develop on an app for humanitarian purposes that can link to the OpenQuake platform

work with GEM on development of a city scenarios

collaborate and share census data on buildings for south-asia

execute a training in socio-economic vulnerability indicator development

fund a series of workshops

Let us know what your ideas are..

Learn more...



www.globalquakemodel.org

Where do you come in?

Your questions
Your needs
Your ideas