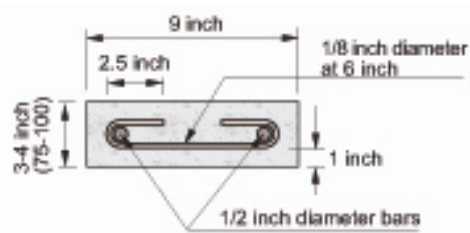




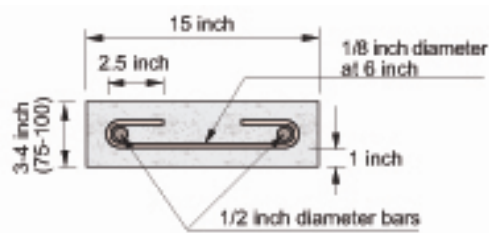
You can make your **NEW HOUSE** safe against **EARTHQUAKE!** FOLLOW 10 RECOMMENDATIONS

For Single Storey Masonry Houses in Cement Sand Mortar

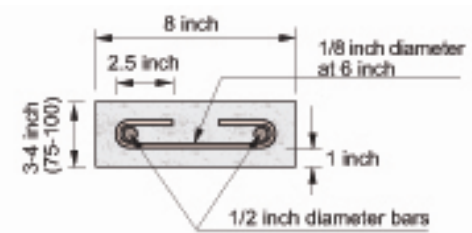
8. Horizontal Bands & Corner Strengthening



Brick masonry wall

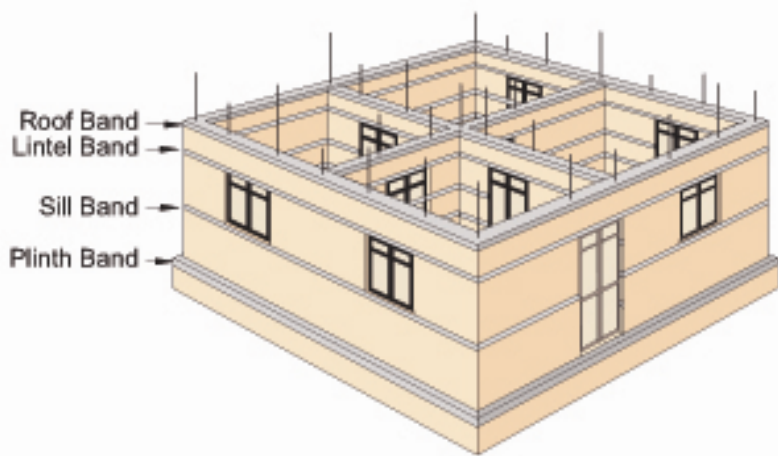


Stone masonry wall

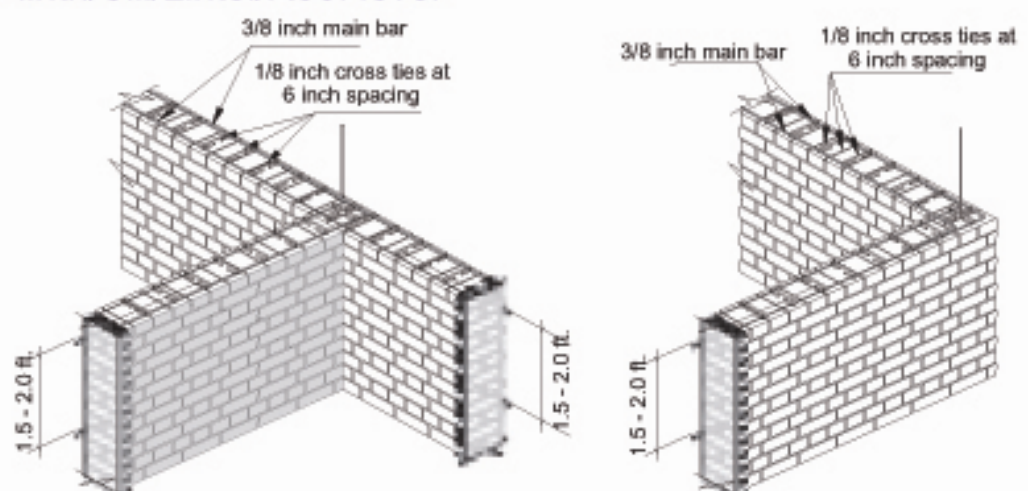


Concrete block masonry wall

Details of RCC bands at Plinth/Sill/Lintel/Roof level



Horizontal bands at different levels of wall



Reinforcement detailing at corners and junctions

3 to 4 inch thick horizontal RCC bands with 2 Nos. 1/2 inch (4 sutar) diameter main bars should be provided throughout the entire wall length at following locations. Properly anchor main bars at each end with standard hooks. Overlap horizontal bars at splice per Table 1 in POINT 10.

- Plinth Band at Plinth Level (DPC Level);
- Lintel Band above Doors & Windows; In case of window size more than 3 ft., provide min. 6 inches lintel above the window;
- Roof Band at Wall top;
- Sill Band – below window level (Sill level);
- In addition to the horizontal RCC bands indicated above, provide horizontal steel comprising 2 Nos. 3/8 inch (3 sutar) diameter bars with 1/8 inch ties at 6 inches apart (or expanded metal mesh), set in a 1:3 cement-sand mortar bed, at a vertical spacing not to exceed 24 inches.