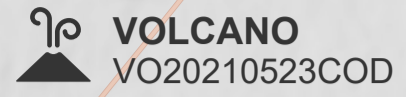


THE DEMOCRATIC REPUBLIC OF THE CONGO

GOMA CITY, NYIRAGONGO DISTRICT, NORD-KIVU PROVINCE / GISENYI, RUBAVU DISTRICT, WESTERN PROVINCE

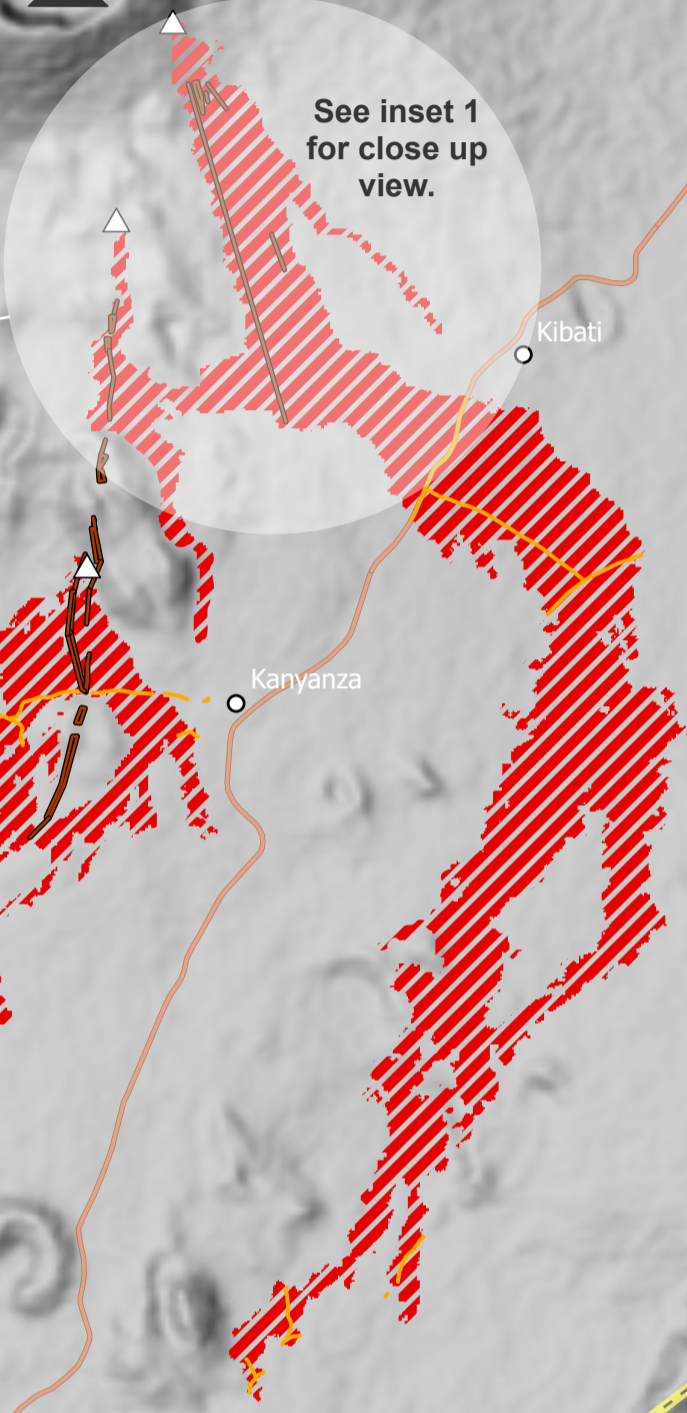
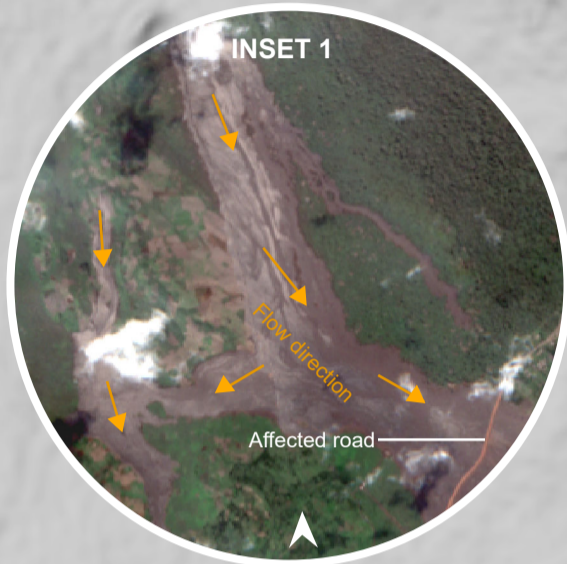
IMAGERY ANALYSIS: 25 MAY 2021- 1 JUN 2021 PUBLISHED 3 JUN 2021 V3.



POTENTIALLY AFFECTED STRUCTURES
1,722

POTENTIALLY AFFECTED ROADS
18 km

Mount Shاهرu



Lava flow and geological information related to the volcanic eruption effect of the 22 May 2021 in NordKivu Province, D.R. of the Congo and the Western Province, Rwanda as of 1 June 2021.

This map illustrates the lava flow extent and the related geological information north of Goma airport, Nord-Kivu province, D.R. of the Congo as detected by satellite images acquired after the eruption of the Mount Nyiragongo on 22 May 2021. UNITAR-UNOSAT analysis used Sentinel-1 acquired on 25 May 2021, Sentinel-2 & Pleiades images acquired on 1 June 2021, at respectively 16:21 UTC, 08:30 UTC and 11:35 UTC, to extract the lava flow extent. Within this map, three vents have been identified along the hillside south of Nyiragongo caldera. In addition, about 10 km of fissures have been mapped and are mainly in NNE-SSW and NNW-SSE directions.

This is a preliminary analysis and has not yet been validated in the field. Please send ground feedback to UNITAR-UNOSAT.

Legend

- City
- Village
- ✈ Airport
- ★ Earthquake epicenter (EMSC)
- △ Volcanic vent (USGS)
- Volcanic fissure (USGS)
- Affected road
- International boundary
- - - City Boundary
- Primary road
- Secondary road
- ▨ Maximum lava extent as of 1 Jun 21

DR CONGO

RWANDA

Lake Kivu

Spatial Reference
Name: WGS 1984 UTM Zone 35S
PCS: WGS 1984 UTM Zone 35S
GCS: GCS WGS 1984
Datum: WGS 1984
Projection: Transverse Mercator
Central Meridian: 27.0000

Satellite Data (Post): Sentinel-1
Imagery Dates: 25 May 2021
Resolution: 10 m
Copyright: Contain modified Copernicus Sentinel Data [2021]
Source: ESA

Satellite Data (Post): Sentinel-2
Imagery Date: 1 Jun 2021
Resolution: 10 m
Copyright: Contain modified Copernicus Sentinel Data [2021]
Source: ESA

Satellite Data (Post): Pleiades
Imagery Date: 1 Jun 2021
Resolution: 50 cm
Copyright: CNES (2021), distribution Airbus DS
Source: Airbus DS

Boundary data: OCHA Congo
Buildings: OpenStreetMap
Road: OpenStreetMap
Geological data: USAID - USGS Volcano Disaster Assistance Program
Epicenters: EMSC
Background: ALOS Global DSM

Inset1: Sentinel-2/ 1 Jun 2021
Inset2: Pleiades/ 1 Jun 2021
Analysis: UNITAR-UNOSAT
Production: UNITAR-UNOSAT

