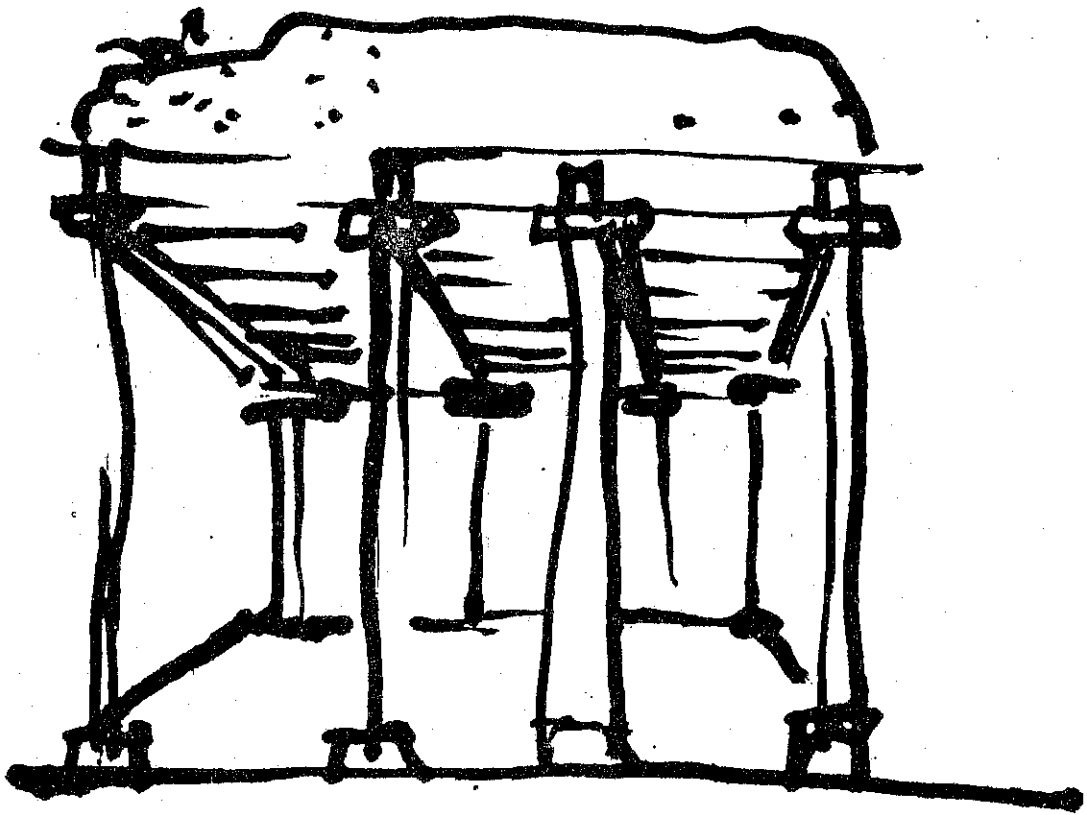


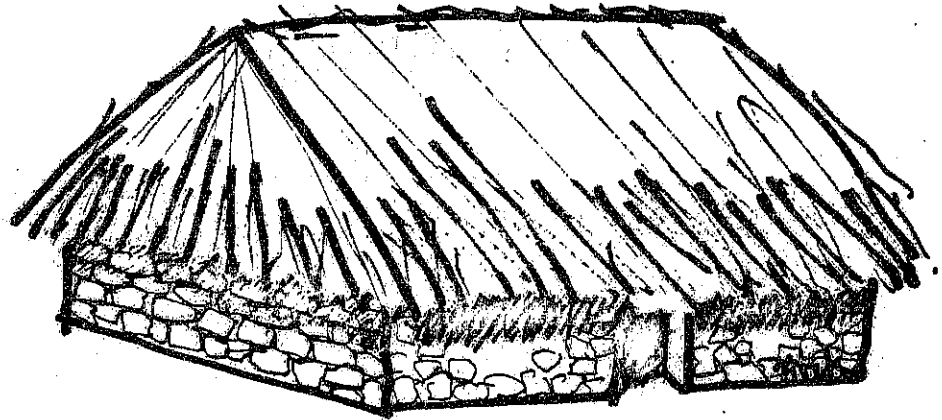
# REPAIRS AND RETROFITTING

THE MARATHWADA HOUSES



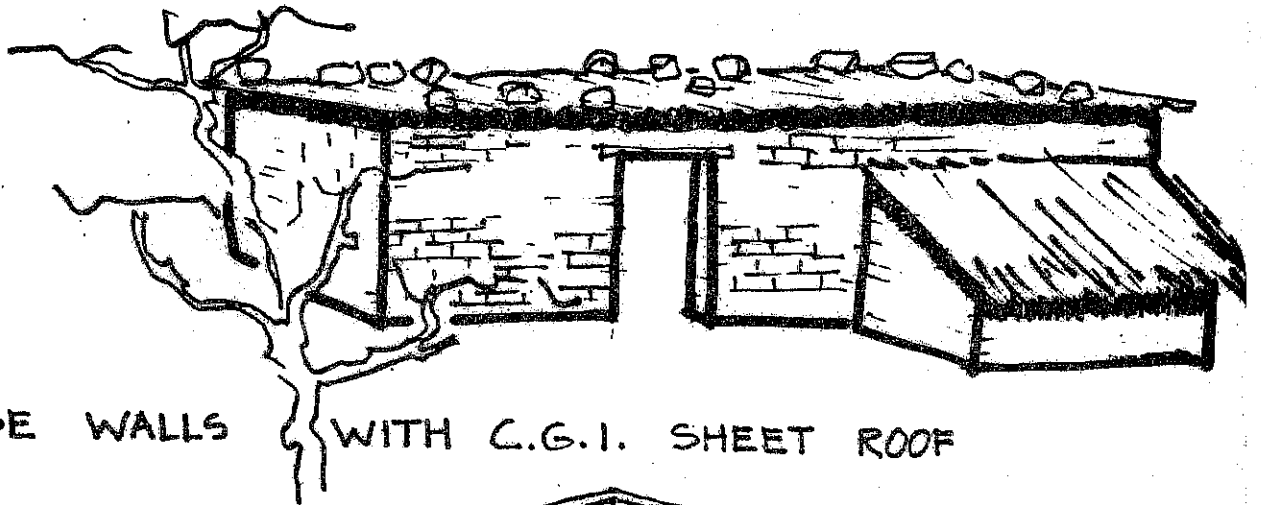
ASAG

# THREE TYPICAL TYPES OF MARATHWADA HOUSES



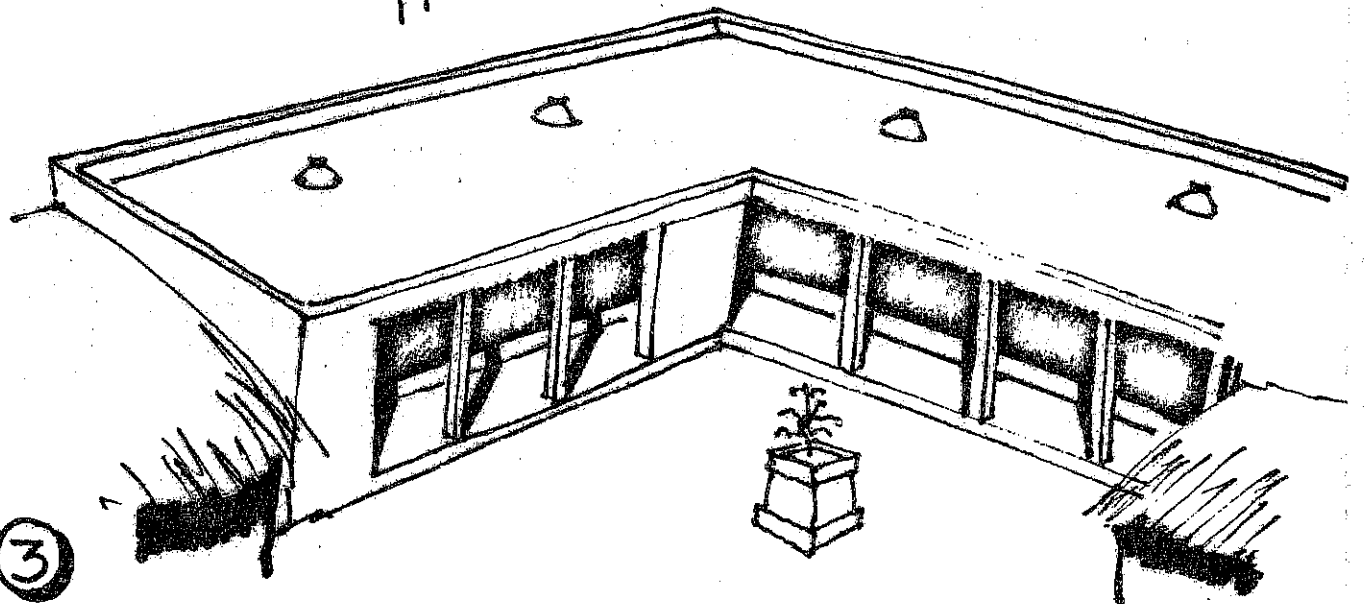
①

LOW STONE WALLS WITH HIGH PITCHED THATCH ROOF



②

ADOBE WALLS WITH C.G.I. SHEET ROOF



③

STONE & MUD WALLS WITH MALWAD TYPE ROOF

# RESPECTIVE STRUCTURAL SYSTEMS OF TYPICAL MARATHWADA HOUSES

