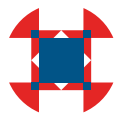


Why the People's Forum?



CHOGM
Malta 2015



People's
Forum



Commonwealth
Foundation

What makes societies resilient?

Societies across the globe have been rocked by a variety of shocks, from earthquakes and typhoons to epidemics, extremist attacks and financial crises. If the Commonwealth is to enable societies to be more resilient to these challenges, we need to think more strategically and holistically.

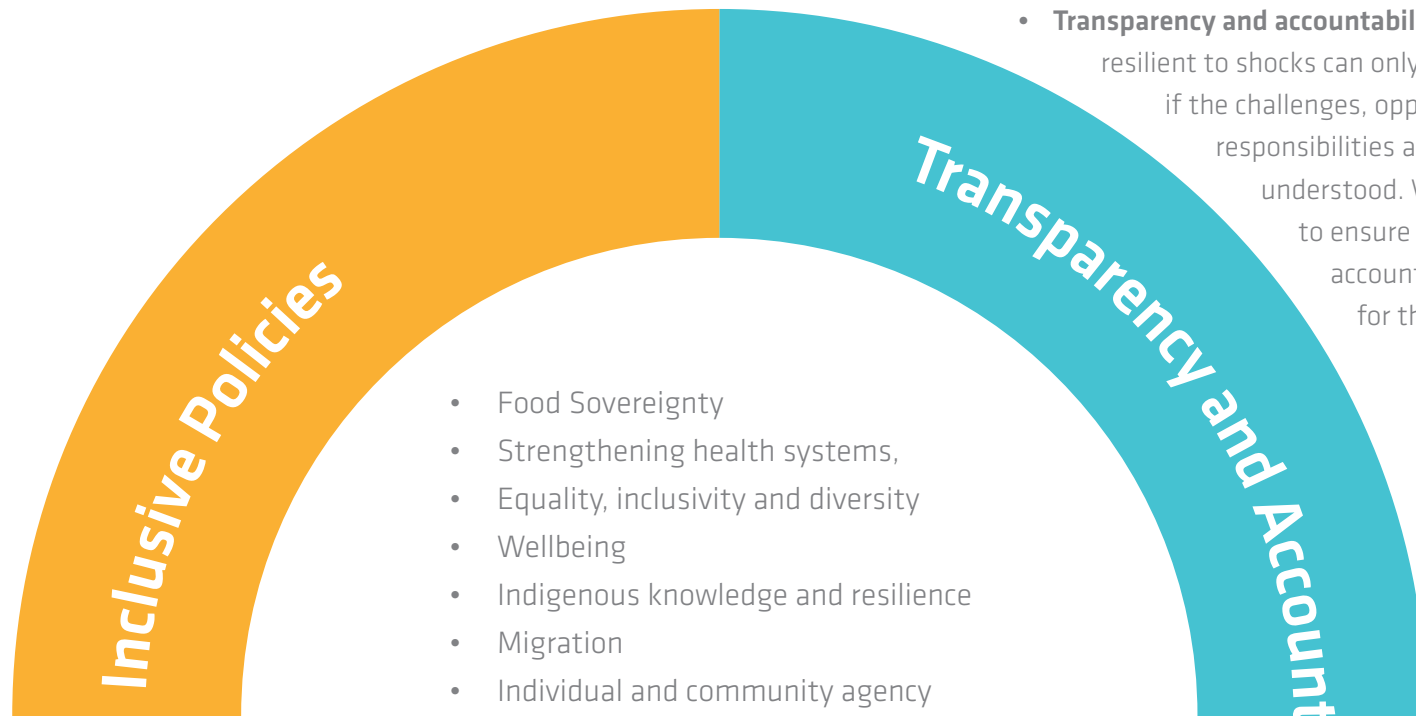
Specifically, we need to view resilience not as a response to shocks but as an integral part of development policies to meet challenges proactively. More importantly, we need to view resilience from a social perspective, not just through traditional economic and environmental lenses.

This year's Commonwealth People's Forum, to be held in Malta (23-25 November), will bring together civil society representatives and policymakers from across the Commonwealth to address the issue of resilience for the first time and to forge a new way forward.

A dynamic, interactive event focused on three main themes

Supported by invigorating speakers, such as sustainability pioneer Vandana Shiva, as well as numerous interactive events, discussions and films, the three-day conference, entitled *What makes societies resilient?*, will focus on:

- **Transformative societies:** By definition, shocks are unexpected and societies are often unprepared for them. How can we prepare societies for these challenges and enable them to use shocks constructively to transform communities for the benefit of all? How can people's potential to contribute be realised?
- **Inclusive policies:** One of the Commonwealth's greatest strengths is its cultural, social, economic and political diversity, providing a wealth of ideas and resources. How can we ensure that policies draw on this collective potential – from civil society and policymakers, across all levels of society – so that we work together to develop sustainable, mutually beneficial solutions?
- **Transparency and accountability:** Societies that are resilient to shocks can only collaborate effectively if the challenges, opportunities and responsibilities are widely known and widely understood. What needs to be done to ensure greater transparency and accountability to prepare for the future?





Opportunities to make your mark and build new collaborative platforms

What makes societies resilient? is the first step in a Commonwealth-wide drive to strengthen resilience. At the event, there will be lots of opportunities for you to shape the agenda for moving forward and to build collaborative platforms with your counterparts in other countries. CPF 2015 will also identify a number of useful resources to help you sustain the momentum in your country.

Some of the features of the event include:

- Direct interaction with policymakers
- Interactive discussions with cutting-edge and inspirational speakers
- Workshops and roundtables
- Networking events with a wide range of people from different cultures
- Tools and resources to develop the capacity of your organisation
- Case studies and films
- Innovative use of technology
- A day-trip to Malta's sister island, Gozo, to discuss issues with local civil society organisations.



Join us!

If you'd like to take part in the *What makes societies resilient?* conference, visit **www.chogm2015.mt** for further details.

If you need more information or have any questions, please do not hesitate to get in touch with us. We look forward to hearing from you.

Contact: **peoplesforum@chogm2015.mt**