

City of Dordrecht Island in the Delta

Ellen Kelder
01-06-2015



UNISDR

United Nations Office for Disaster Risk Reduction

DORDRECHT



Climate Adaptation Mainstreaming through Innovation

The Interreg IVB
North Sea Region
Programme



Content Presentation

Profile

Progress

Action plan

Profile

Dordrecht: City in a Delta



In the red circle: Dordrecht

Amsterdam

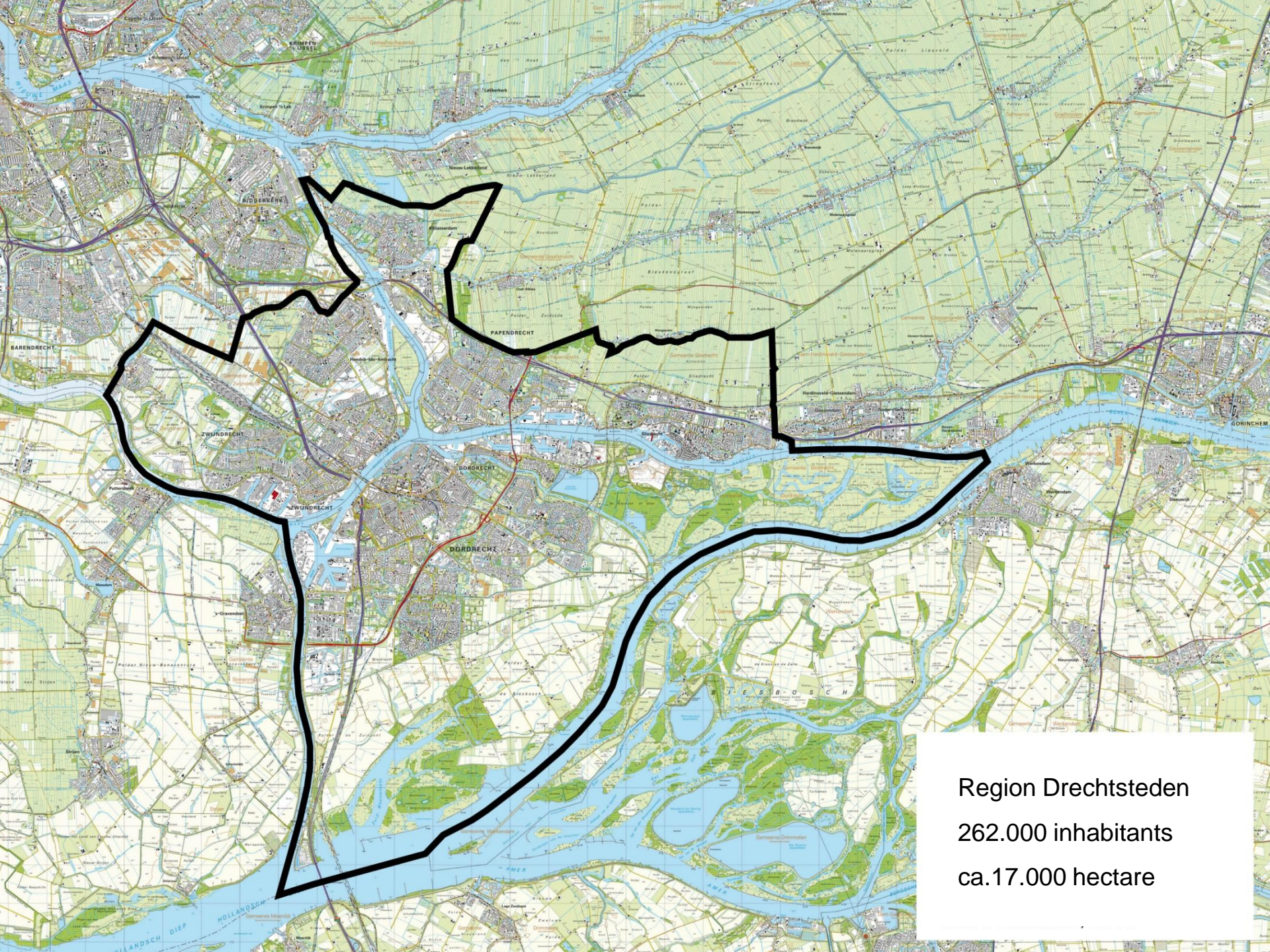
A satellite map of the western Netherlands, showing the North Sea to the west. The land is covered in green vegetation and urban areas. Two cities are marked with red dots: Amsterdam, located in the northern part of the image, and Rotterdam, located in the southern part. A red circle is drawn around the Rotterdam area, indicating the location of Dordrecht. The text 'Amsterdam' is written in red next to its dot, and 'Rotterdam' is written in red next to its dot. The text 'In the red circle: Dordrecht' is written in white at the top right of the image.

Rotterdam

An aerial photograph of Dordrecht, Netherlands, showing a complex network of canals and fields. The canals are a mix of blue and brown, winding through a patchwork of green and brown agricultural fields. Some urban areas are visible as clusters of buildings. The overall landscape is a mix of water, land, and infrastructure.

Dordrecht

The island of Dordrecht with 120.000 inhabitants



Region Drechtsteden

262.000 inhabitants

ca.17.000 hectare

Three Key Elements

- Maritime Cluster
- Historical Innercity of Dordrecht
- Unique Landscape's



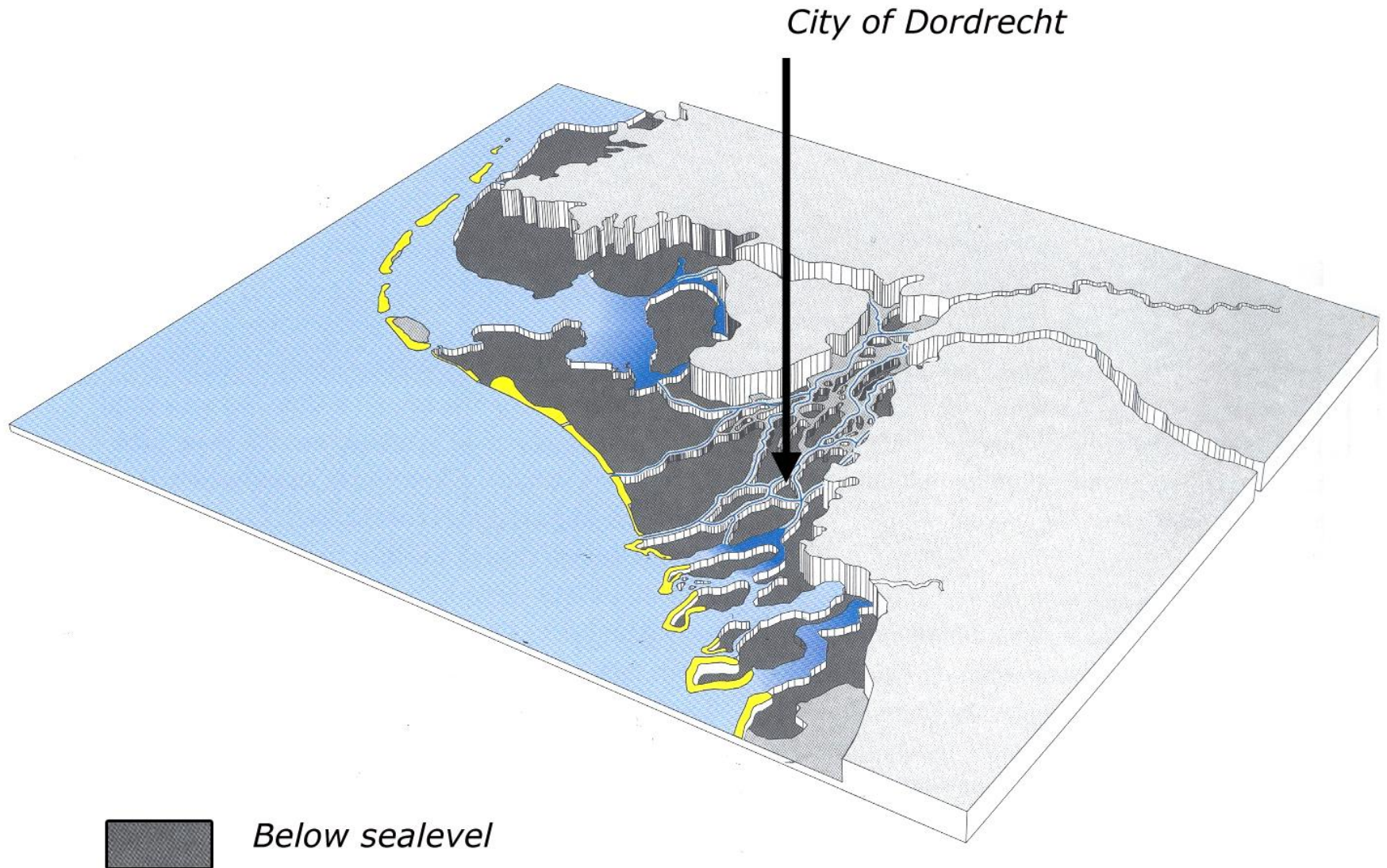
Profile Region Drechtsteden Manufacturing

- 3rd maritime hub of the Netherlands
- 8,5% of the total maritime employment
- 850 maritime businesses
- 8.000 employees
- 2.700 in manufacturing

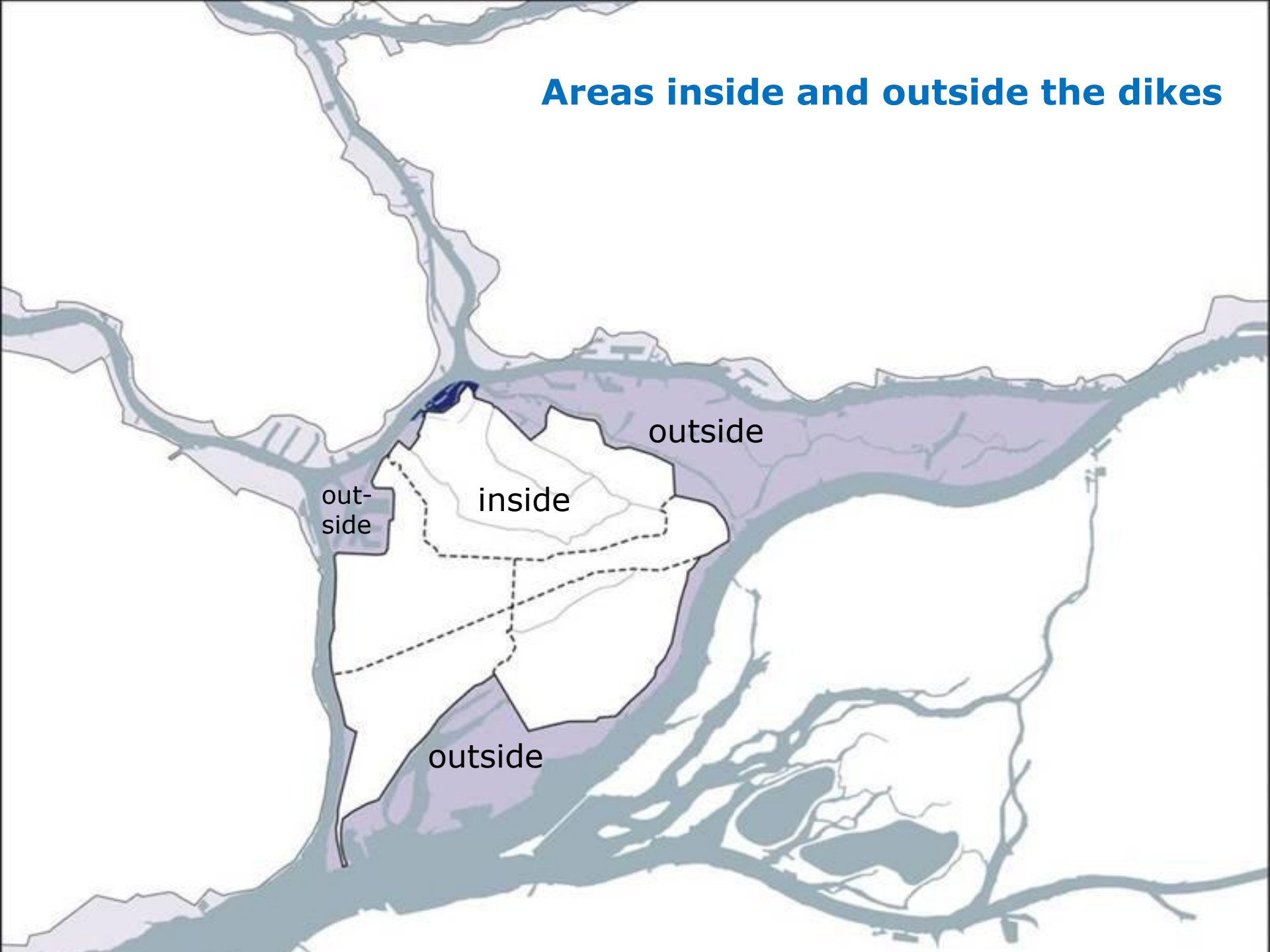
Sub sectors:

- Ship-building: +/- 1.500 employees = 15% of national total
- Maritime suppliers: +/- 2.100 employees = 15% of national total
- Water engineering: +/- 4.000 employees = 70% of national total
- Inland shipping: +/- 1.800 employees = 14% of national total

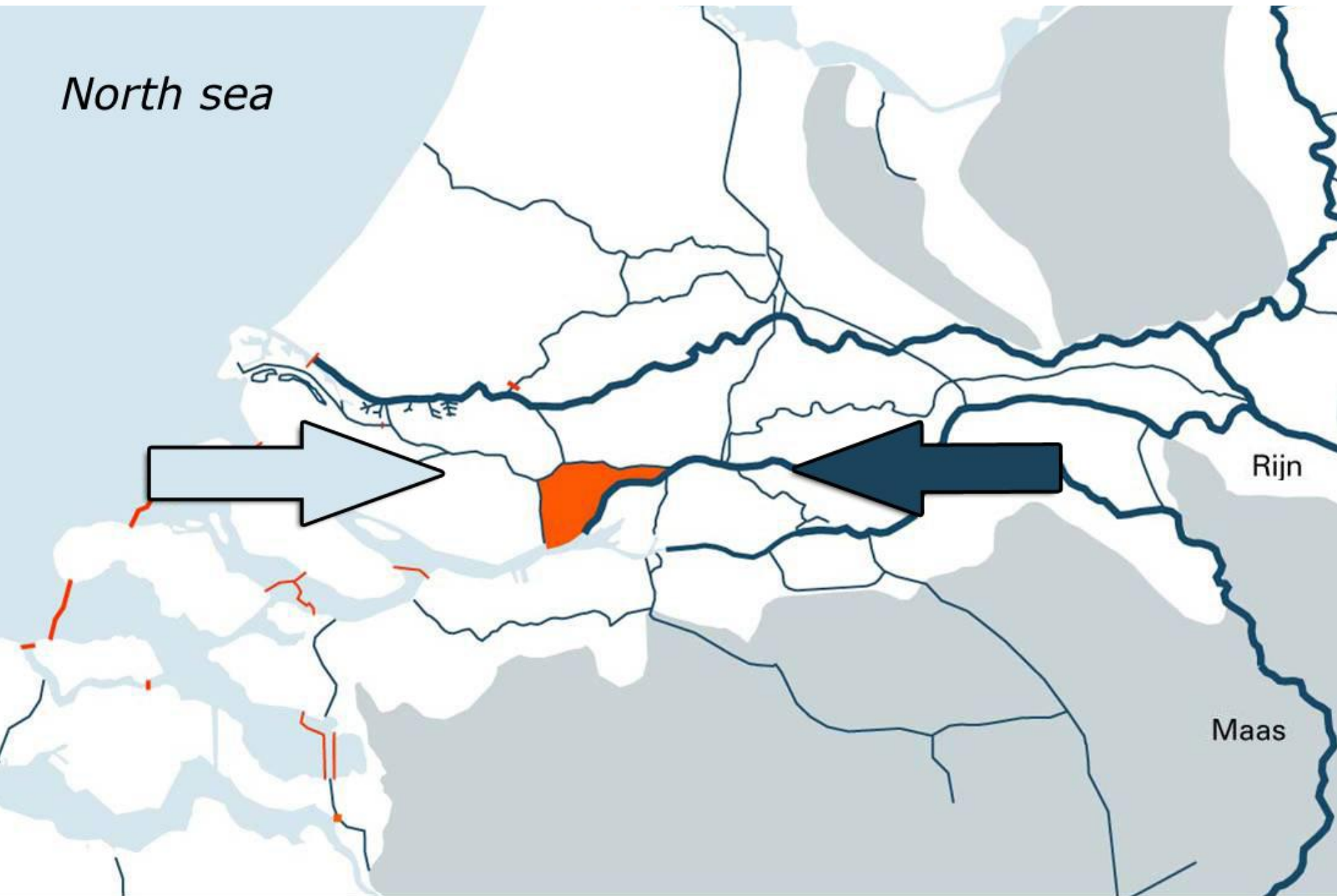
Position in lowlands of the Netherlands



Areas inside and outside the dikes

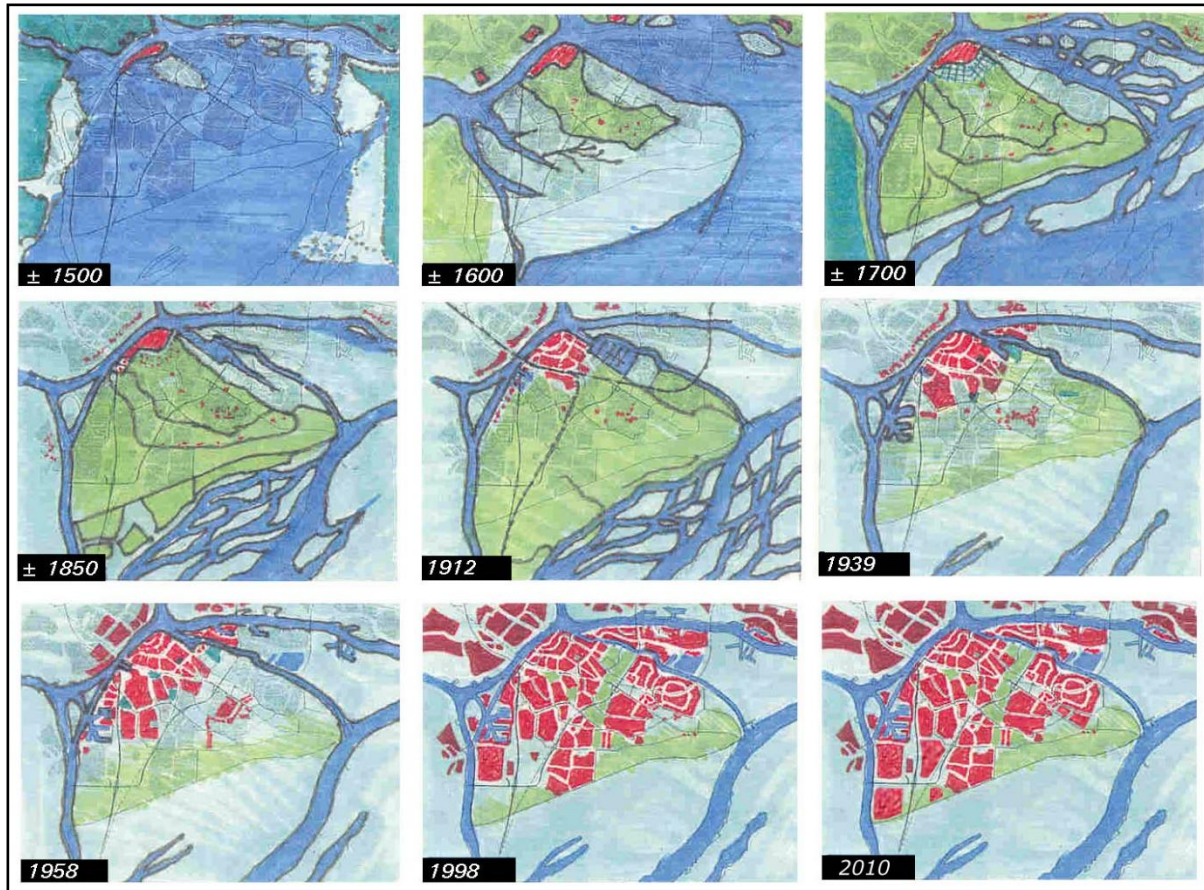


Risk of flooding – influence from the sea and the



Dordrecht & Resilience

1421: Rural areas around the City of Dordrecht were unable to recover from St. Elizabeth Flood

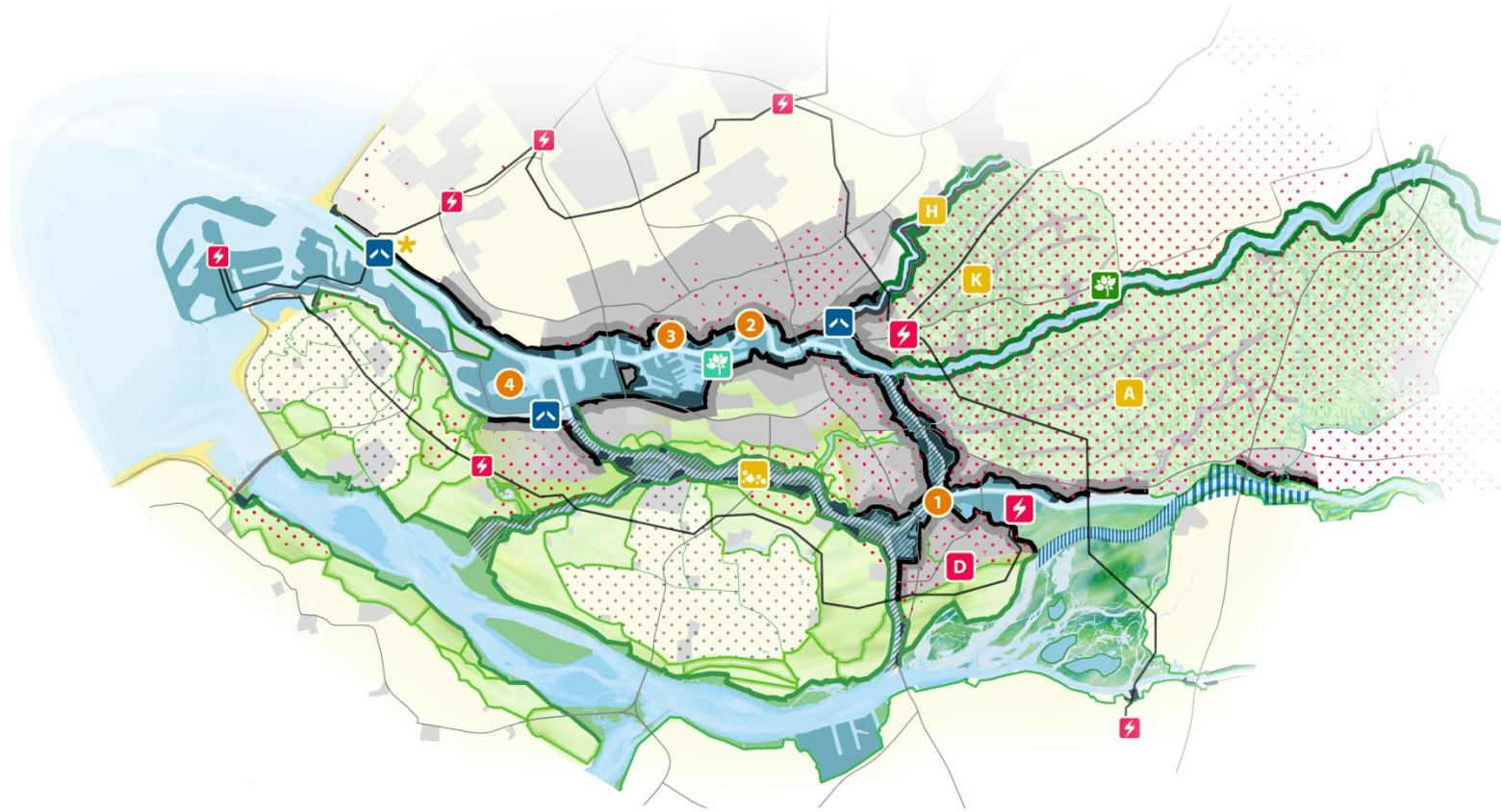


1953: Narrow escape because of dike breaches in neighbouring dike ring area (Hoeksche Waard)



Progress

2014: Adoption of Delta Decisions and new safety strategy in anticipation of a possible disaster



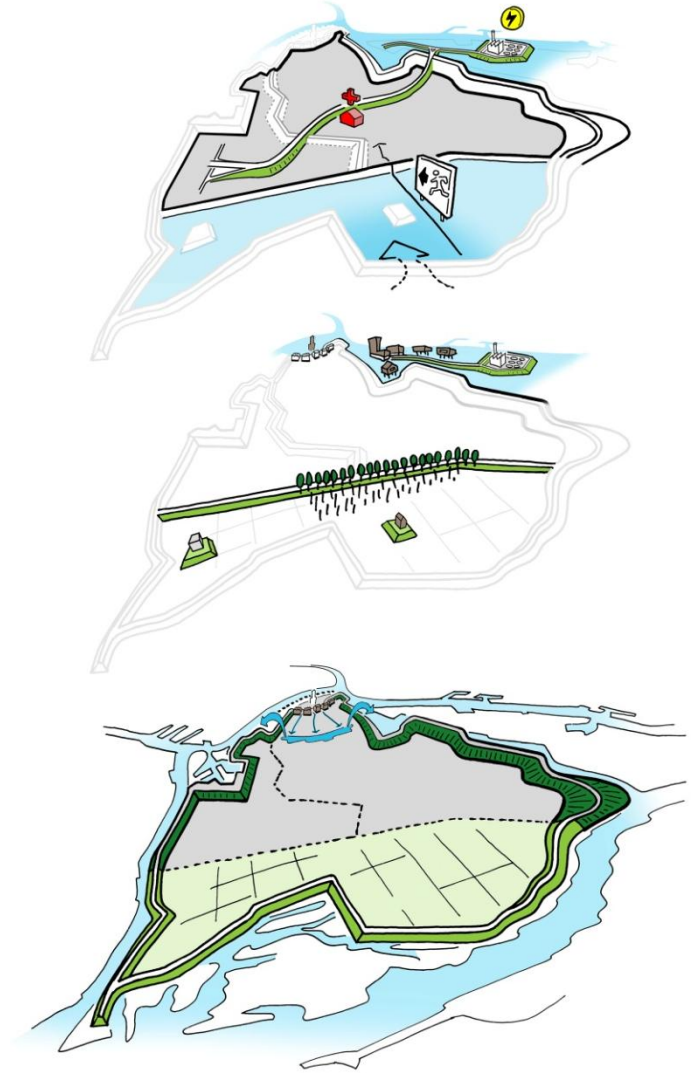
Local actions in strategy

Local actions are combined across 3 safety layers:

3. Emergency management

2. Spatial planning & layout

1. Protection through dikes



Level of progress

Comprehensive (++):

- **Essential 1:** Close cooperation between all levels of government in Delta Programme and execution of local actions (i.e. strategy development)
- **Essential 2:** Detailed risk assessments are available from Delta Programme, and will be update every 6 years

Minor (--):

- **Essential 9:** No clear plan (yet) for nearby or vertical evacuation of the local community
- **Essential 10:** Limited attention (up to now) for post disaster recovery and reconstruction

Level of progress

Comprehensive (++):

- **Essential 4:** Close cooperation between urban planners and water engineers.
- **Essential 2:** Detailed risk assessments are available from Delta Programme, and will be update every 6 years

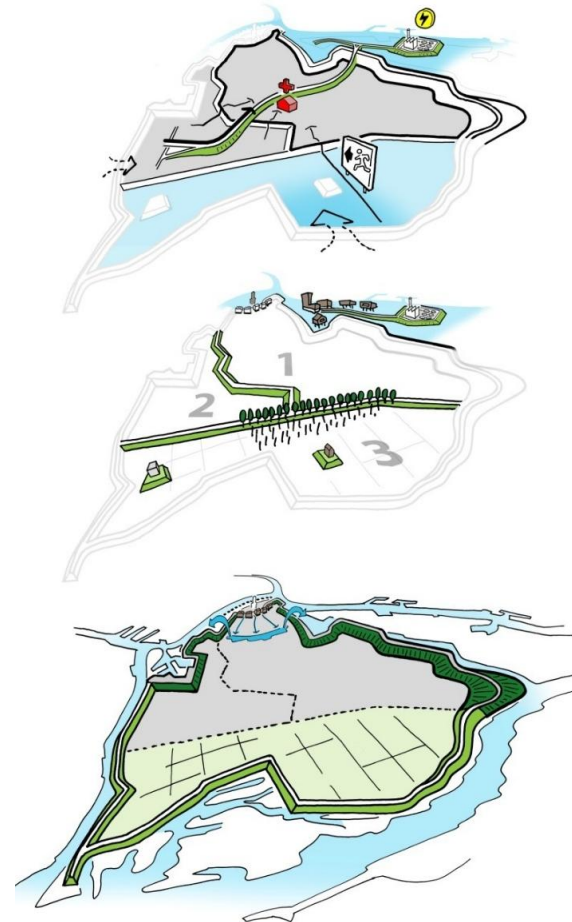
Minor (--):

- **Essential 8:** No clear plan (yet) to protect the vulnerable critical infrastructure for the future scenario's.

Action Plan

Delta Decission Water Safety (Flood Risk)

- The excecution of the preferred floodrisk management strategy for the region Rotterdam Drechtsteden (Dordrecht)
- Explore the possibilities of a Multy Layer Safety approach of the floodrisk management strategy for the Island of Dordrecht. Project group: National and regional partners.



Implementing Delta Decission: Mainstreaming

- Fully exploit the added value of water to realise the ambitions of related policy areas.
- Internal cooperation (between sectors in the administration) and external cooperation (between city partners) to develop a shared vision and strategy that helps to realise mainstream opportunities and spatial and social development opportunities

