



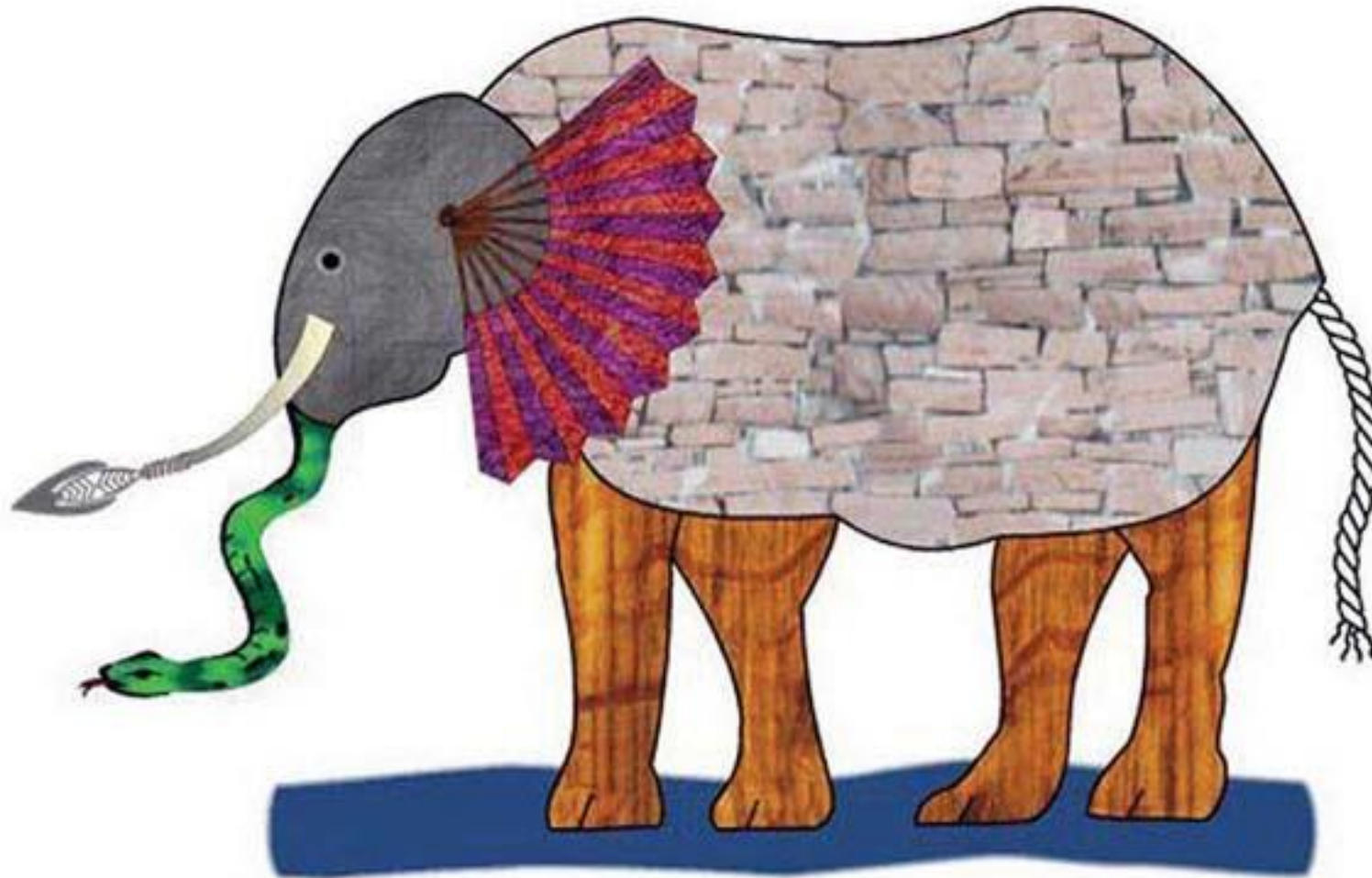
Risk perception through the eyes of social sciences...

Prof. Dr. María Máñez

Climate Service Center Germany (GERICS)
Helmholtz Center Geesthacht



- How does social sciences help the understanding of risks?
- How could social sciences help to improve disaster risk reduction policies?
- What are the planned actions for the scientific community in implementing the Sendai Framework?



Core knowledge on risk perception, individual risk–related behaviour and decision-making processes.

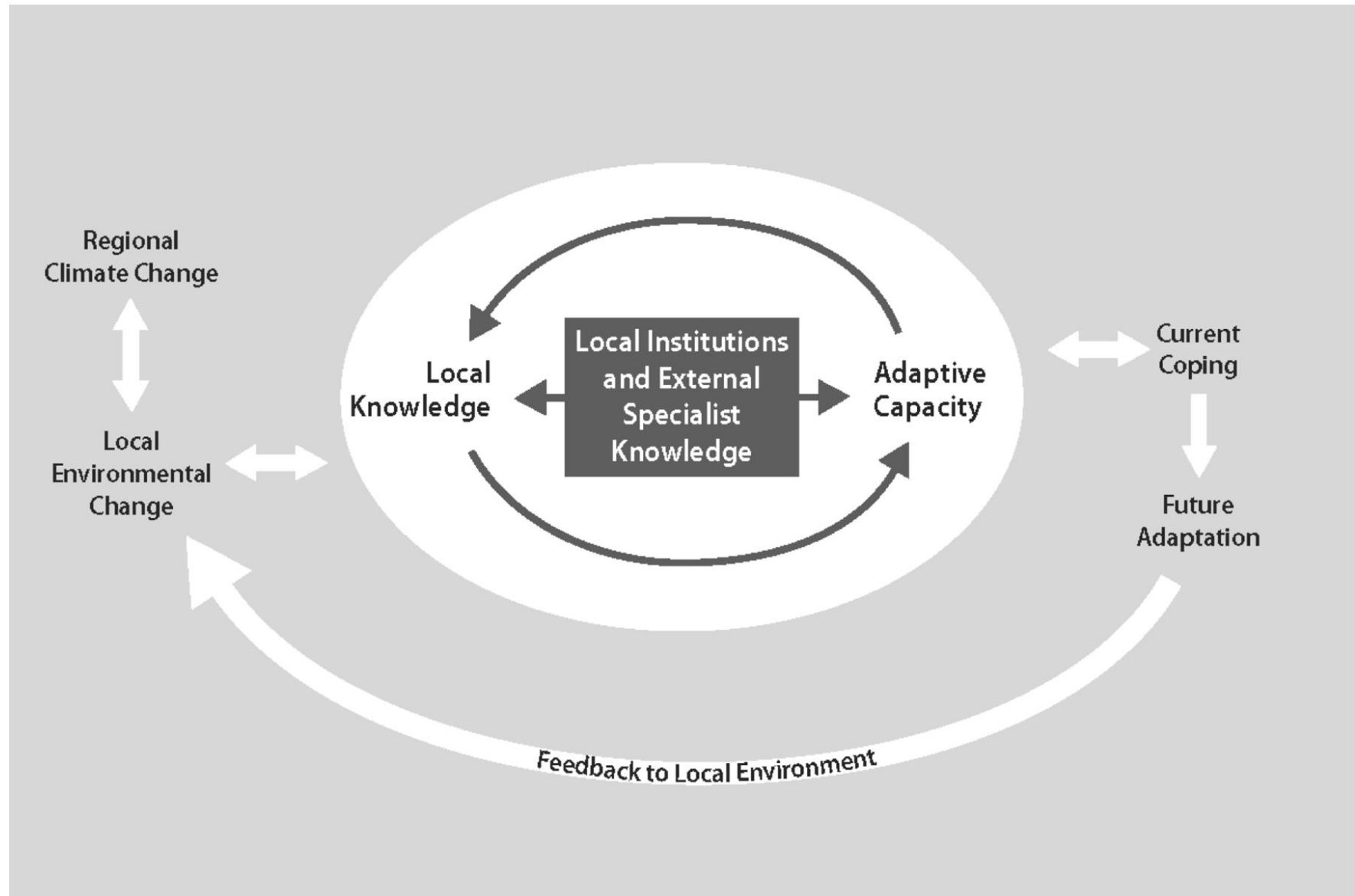


Social science and risk management??

New thinking on risk, vulnerability and poverty, the risk process and human roles in the accumulation of risk

From the economic point of view the answer is easier. We find them in any calculation done regarding risk management – from insurances to prioritization of different management possibilities choosing the more cost-efficient

Integrated modeling of global processes of development, industrial transformation, urbanization and other aspects of global change.



Technical versus/and social approaches

Technical approaches based on the natural sciences and technologies often bring a perspective and framing that is supply-driven, expert-led and resource demanding.





Syllogism...



- Traditional/local knowledge acquisition
- Perception on risk that drives management without governmental help – multi-sector partnerships
- Tools for collecting.

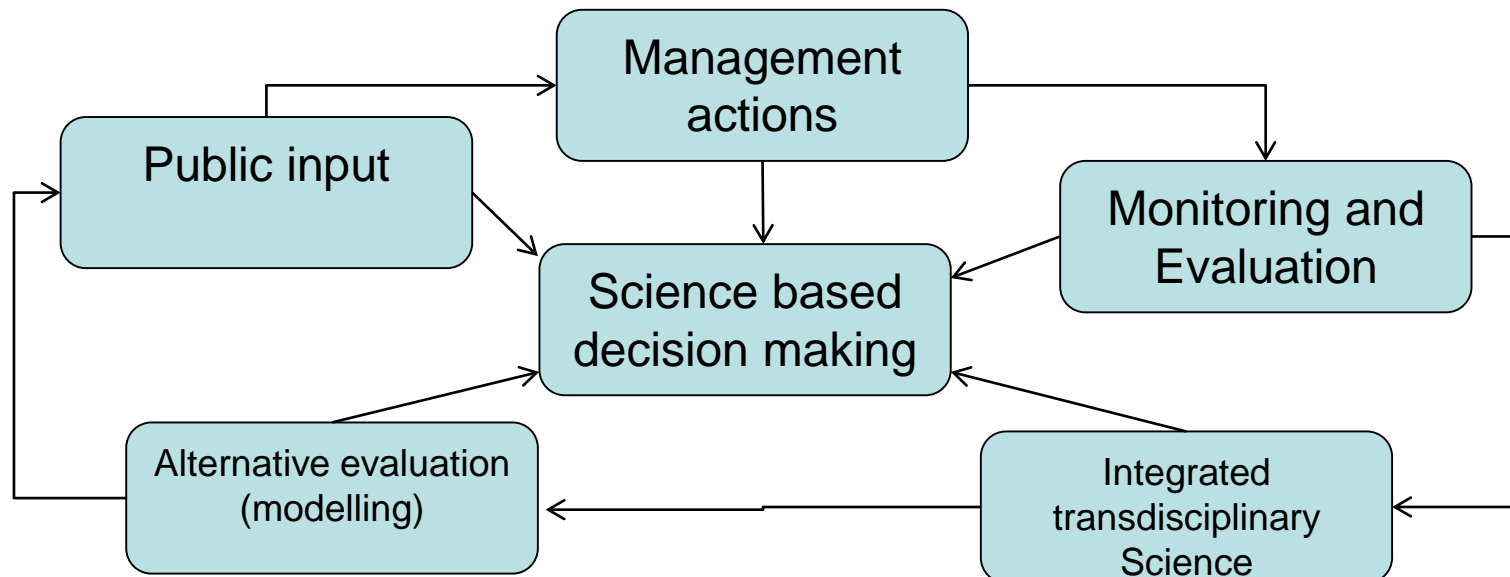
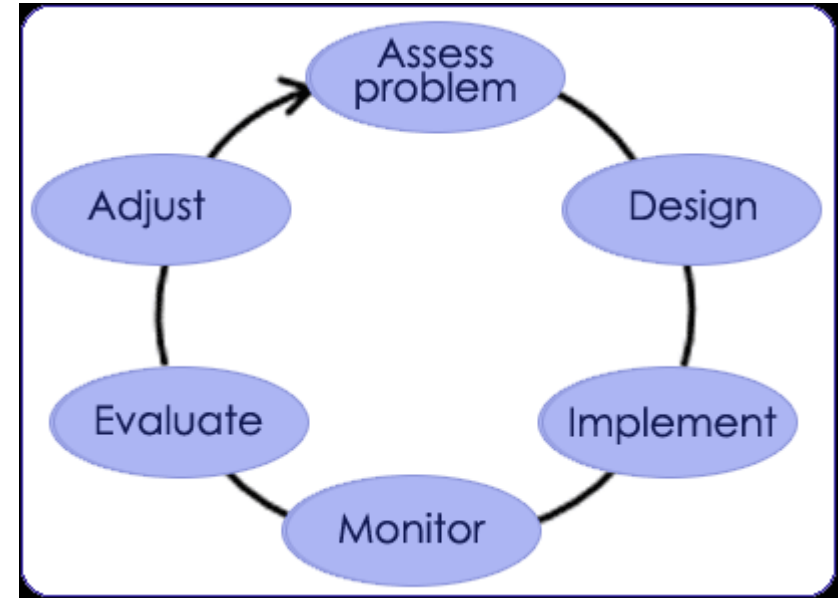
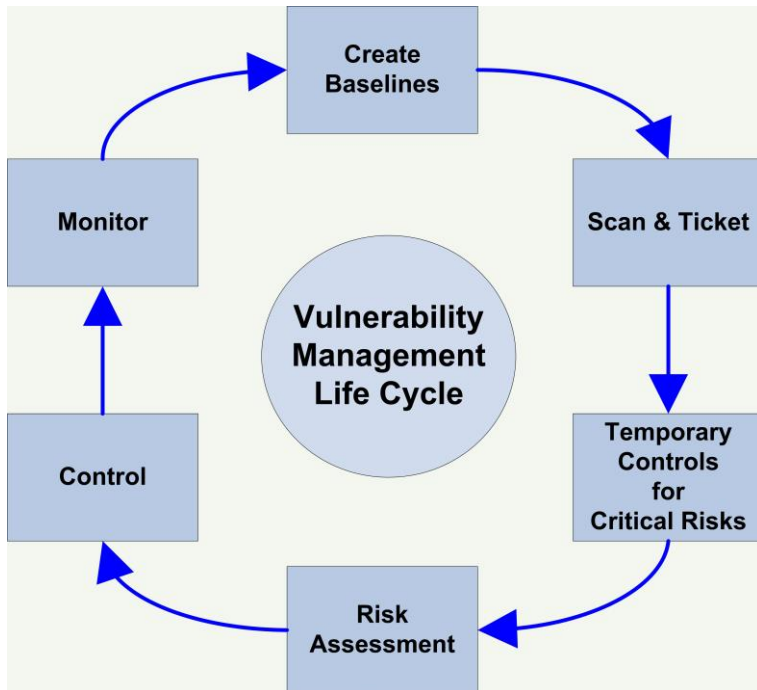


Social Sciences Tools

Case Study Research
Comparative Research
Content Analysis
Cost-Benefit Analysis
Demographic Analysis
Ethnographic Research
Focus Groups
Geographic Information System (GIS)
Historical Research
Interviewing
Non-market Valuation
Observation
Predictive Modeling
Rapid Rural Appraisal
Secondary Data Analysis
Social Assessment
Social Impact Assessment
Social Network Analysis
Surveys



Vulnerability management





- Governance structures and performance
- To provide in-depth studies of their sustainability in risk management

Private-private partnerships

Private-public partnerships

Multi-sector partnerships



Thank you for your attention!

Contact:

Prof. Dr. Maria Mañez
Climate Service Center Germany (GERICS)
Fischertwiete 1
20095 Hamburg

maria.manez@hzg.de
www.gerics.de



