

# EFDRR – Natural Hazards and constructions in the Göta river area

Ulf Gustavsson

County Administrative Board of Västra Götaland  
Emergency Management Department

[ulf.gustavsson@lansstyrelsen.se](mailto:ulf.gustavsson@lansstyrelsen.se)



# County Administrative Board of Västra Götaland



- 49 municipalities
- 1,5 million inhabitants
- 17 % of Sweden's population
- 66 inhabitants / square kilometre
- 24 000 square kilometre land
- 6 percent of Sweden's area
- 240 kilometres north/south and west/east

# The County Administrative Board – for a sustainable society

- We coordinate and promote National Government action in the County of Västra Götaland
- We contribute to the protection of the individual citizen
- We represent legal security, efficiency, cooperation and a holistic view



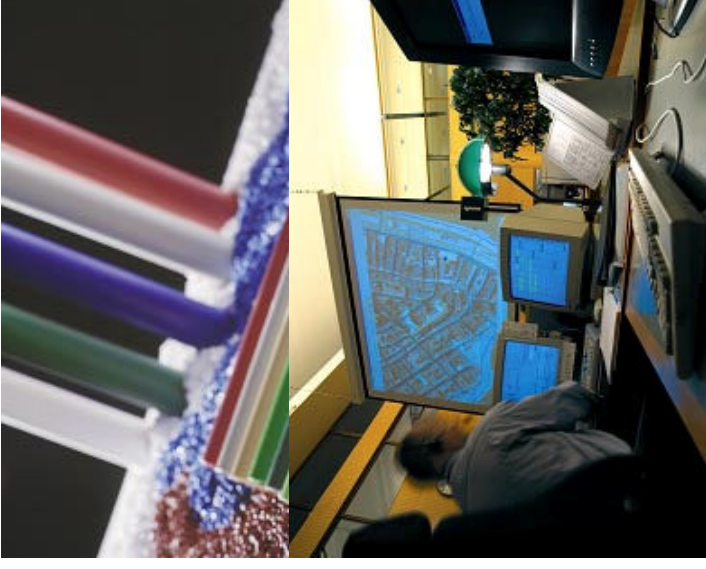
# Nature

- All kinds of landscape – except high mountains
- In the county there are 4 200 lakes
- Approximately 450 nature reserves
- Four national parks: Tresticklan, Djurö, Tiveden and Kosterhavet



# Industries

- Petrochemical centre
- 20 percent of food production
- Half of the fishery
- 65 percent of refined fishing preparation
- Half of textile industry
- 10 percent of forestry
- Centre for Swedish car production



# Climate adoption at the County of Västra Götaland

- Identify different consequences of flooding
- Coordinate during floods
- In cooperation with other authorities take measures to reduce the consequences
- Planning and training for different kind of crisis and accidents
- Coordinate the efforts of climate adaption in the county

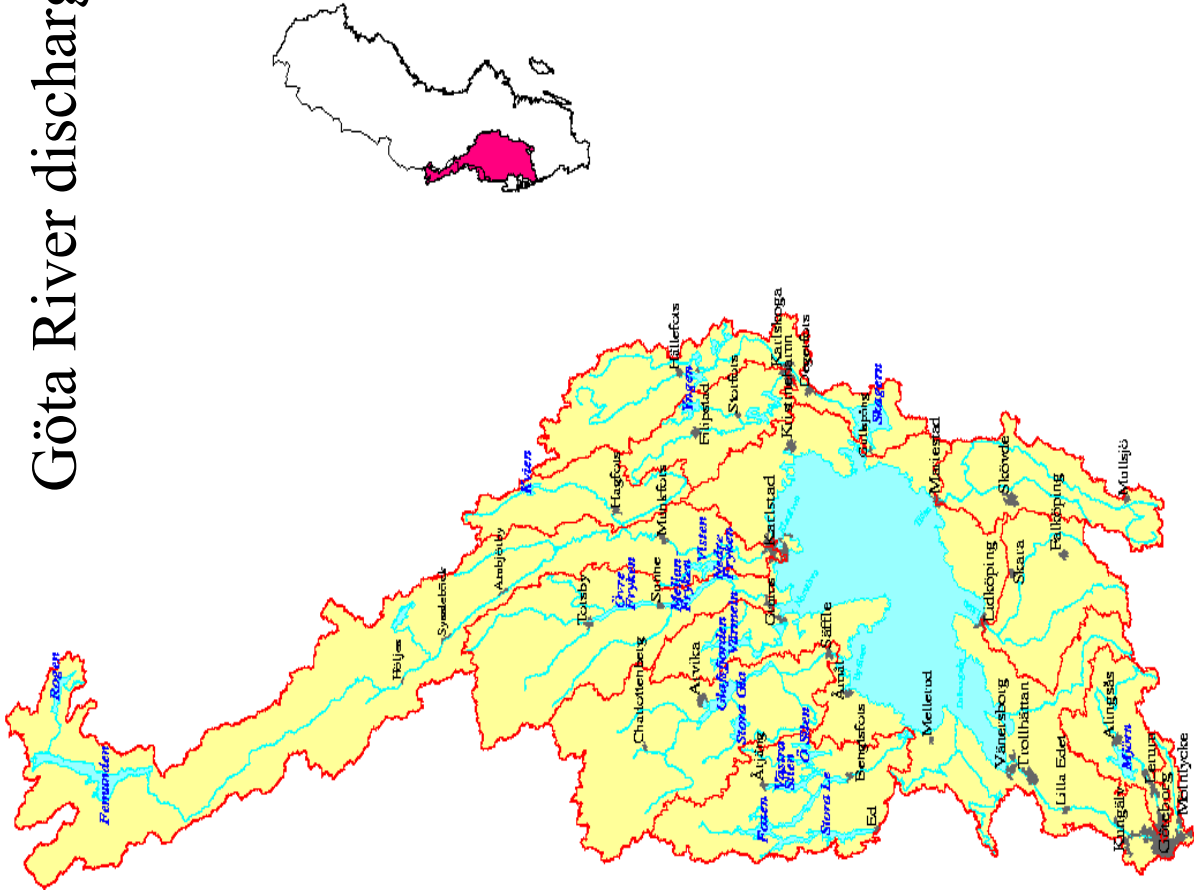




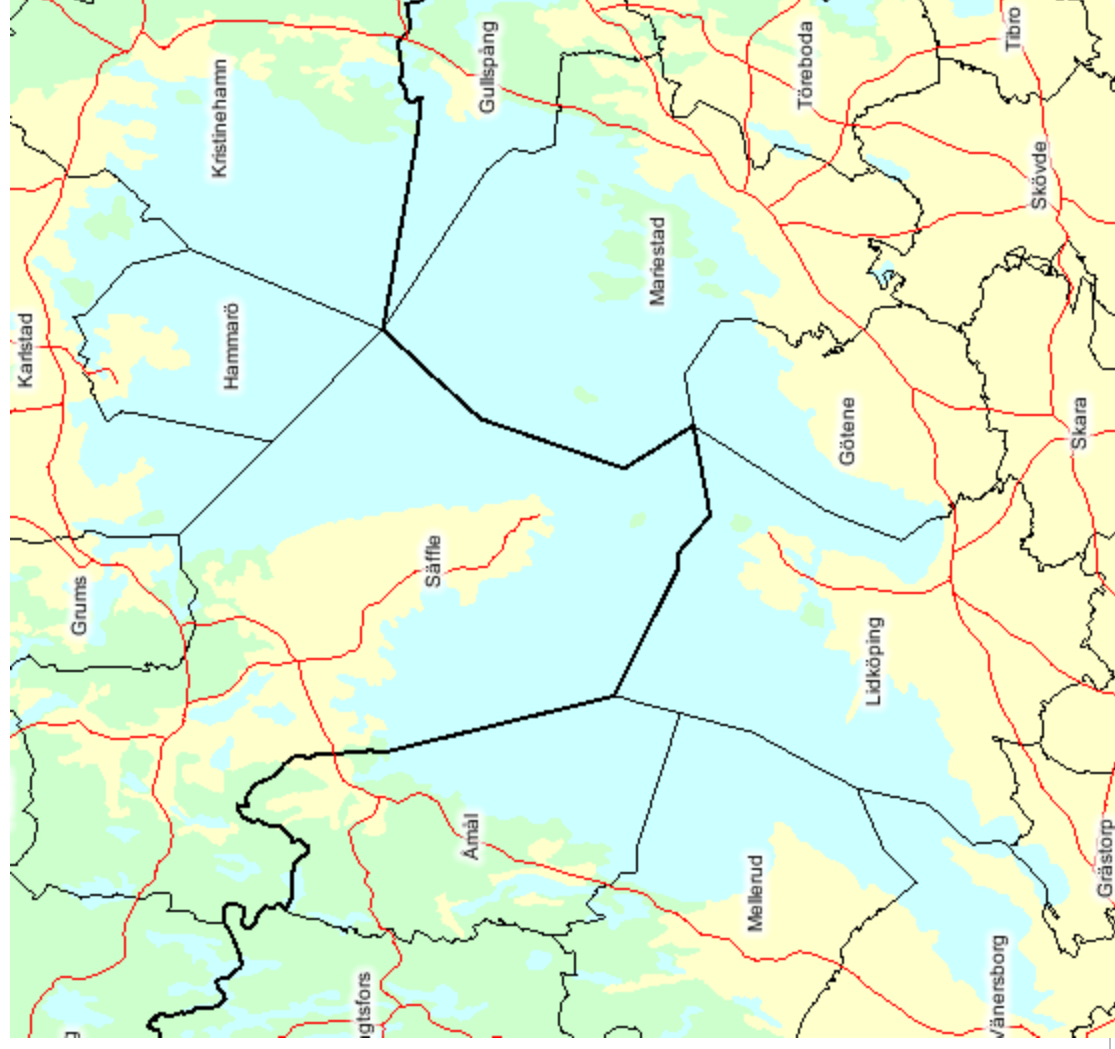


LÄNSSTYRELSEN  
VÄSTRA GÖTALANDS LÄN

# Göta River discharge area



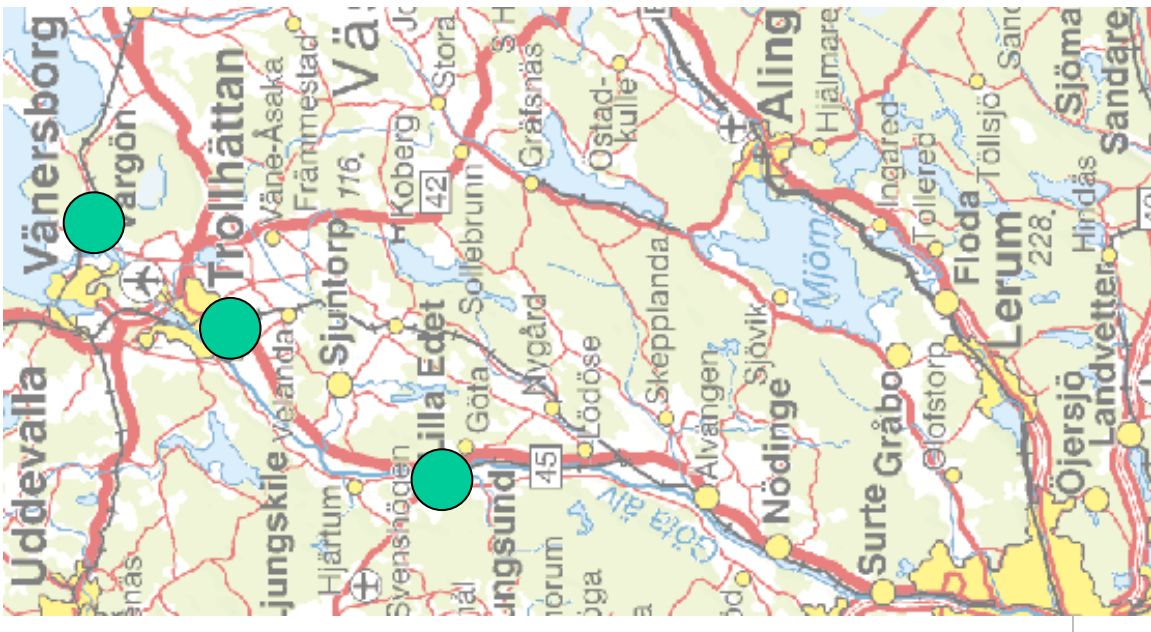
# Lake Vänern



- Average waterlevel, +44,3m
- Climate and vulnerability report, +46,5m/ +47,4m
- Level 2001-01-13, +45,67m
- agricultural area, protected by walls
- roads and railroads
- cities and municipalities
- industries and polluted areas
- sea traffic, water resource



# Göta River



- water power plants
- average flow, 550 m<sup>3</sup>/s
- max by permission, 1000m<sup>3</sup>/s
- 2000/ 2001, 1200m<sup>3</sup>/s
- Climate change 3000m<sup>3</sup>/s ???
- sluices
- sea traffic, water resource
- roads, railroads
- risk of landslides
- industries, polluted areas
- cities and municipalities
- rising sea level



- Agreement with Vattenfall
- approximately reduce the level in Lake Vänern with 40 cm.
  - using prognosis on precipitation
  - in a long term there are possibly a need of other solutions, like a canal or tunnel from Lake Vänern to the sea

