



Sign up today to make your **city** resilient to disasters

Making Cities Resilient: My City is Getting Ready!

World Disaster Reduction Campaign 2010-2011

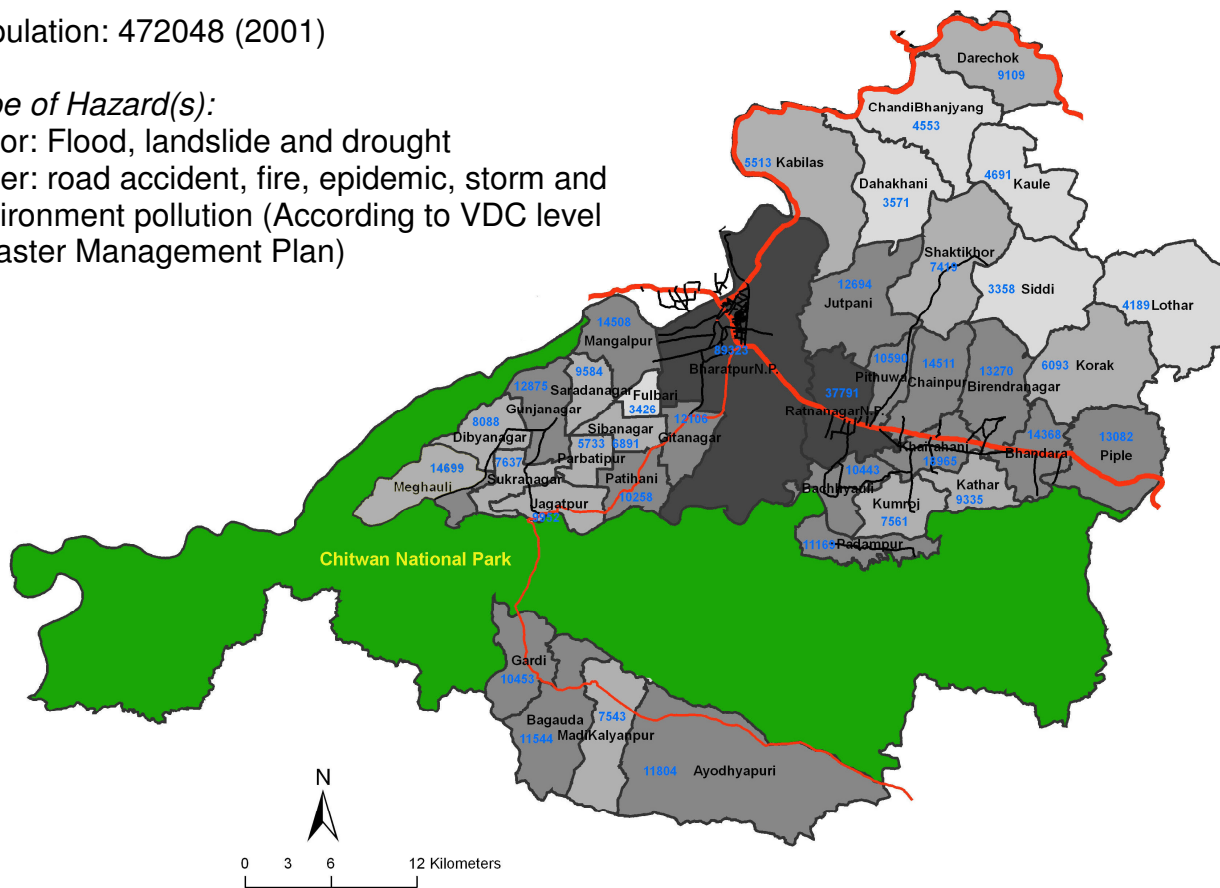
Chitwan District is getting ready!

Chitwan District, Nepal

Population: 472048 (2001)

Type of Hazard(s):

Major: Flood, landslide and drought
 Other: road accident, fire, epidemic, storm and environment pollution (According to VDC level Disaster Management Plan)



There has been assessment of existing and potential hazards in village development committees and municipalities in the district. The assessment identified flood, drought, landslides, wildlife intrusion particularly in crops and livestock, and fire as major prevailing hazards. Water induced hazards have caused major disasters events in the past. Nine VDCs lying in the hill region are prone to landslides particularly during rainy

season. Two major rivers namely Narayani and Rapti, and other smaller streams that create risk of flood (land cutting, inundation) and landslide during monsoon. Drought is here referred to shortage of water for irrigation which goes severe between November to May. As dry periods are extending longer in the recent decades, increasing population is on stress of water shortage for drinking and domestic use as springs and digwells dry off in some locations. Due to erratic rainfall pattern in recent decades likely impacts of climate change combined with increased population demanding more water, shortage of water happens even during monsoon period particularly for irrigation.

Disaster Risk Reduction activities

DDC has initiated several works to reduce disaster risk of the district and improve livelihood of the vulnerable communities to increase resilience. It has developed institutional setup at district and village level, awareness campaigns, school programs, early warning systems, watershed management activities, infrastructures to reduce hazard strength, and enabled professionals in the organization to understand disaster management. The coordination with line agencies and CSOs are strengthened to work jointly to develop integrated programs for multiple risks. District level policies and approaches have been modified from rescue and relief to total disaster management. With these efforts DRR activities are decentralized to VDC and community level and integrated into regular development planning of VDCs. Approaches have now become proactive from reactive in the past. Community capacity to reduce disaster risk due to multiple hazards has been increased. The awareness and the focus of stakeholders (particularly political parties) has been increased and contributed to minimize losses.



“Integrated approach is what we need for total disaster management and Chitwan District has acknowledged the fact that multi-stakeholder partnership in DRR results better and effective outcomes. Chitwan district in partnership between different government agencies, international development agencies and local non government organizations has involved in identifying vulnerabilities of the community to existing hazards and has taken planned initiatives for DRR. Livelihood improvement of vulnerable communities helps building resilience to hazard stresses and disaster shocks. Integration of development and DRR is foundation to sustainable development and disaster resilient societies . Therefore, we should integrate development and DRR in local to national level planning so that it reduces disaster risks and prevents development failure.”

Participation in the UNISDR Campaign puts the district a step ahead in this regard.”

*Uddab Prasad Timalsena
Local Development Officer
Chitwan District Development Office*